

Light efficiency:

83 Lumen/Watt

Light quality:

CRI: 81.2

Color temperature:

2943 K

Output: 2285 lm

Peak: 3442 cd

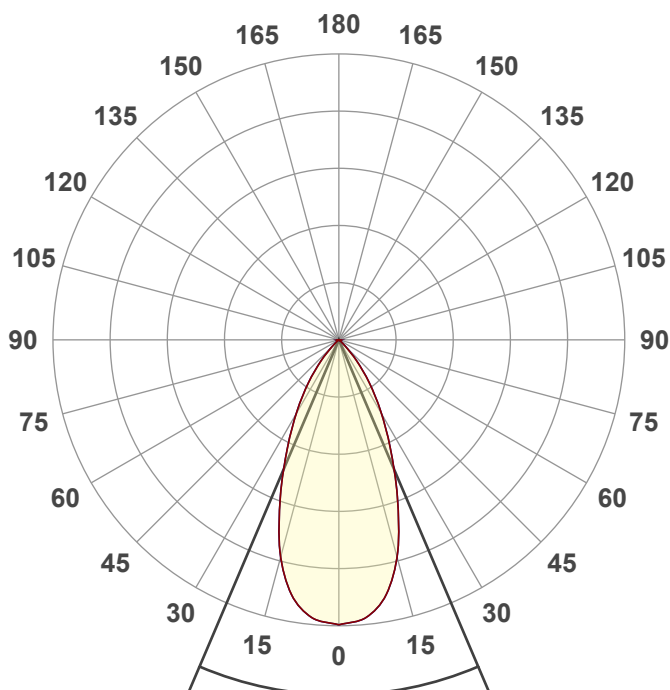
Power: 27.4 W

PF: 0.97



NU3-RD-XTM19-27LM-30K-83-50C-NL-
120-DIM10-NC-WH-WH

Date and time:
1/22/2021 10:43:30 AM



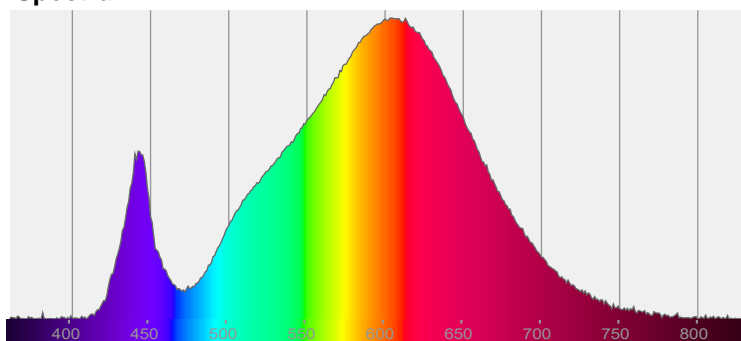
Beam angle

46.2°

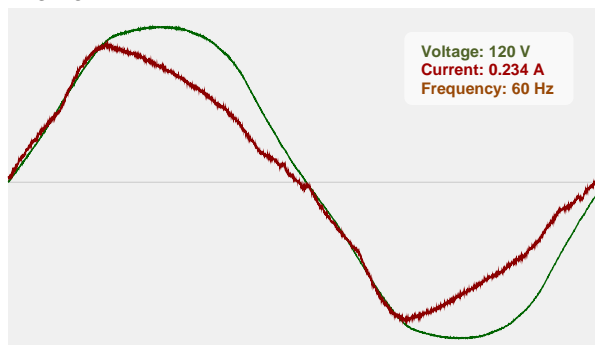


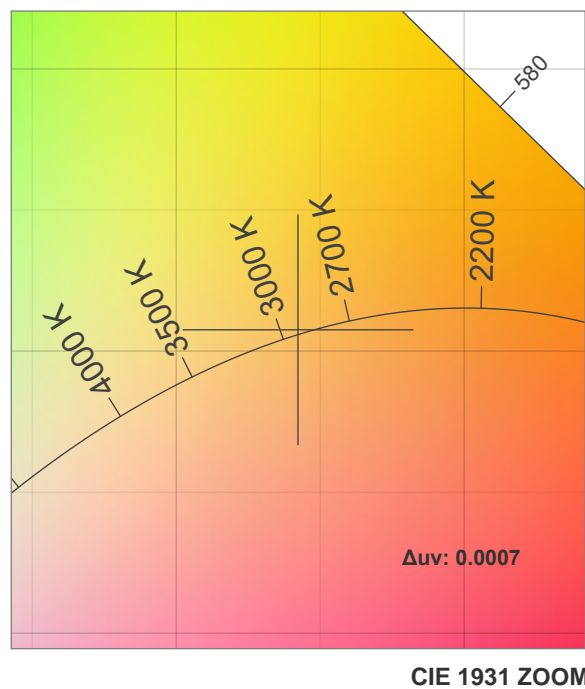
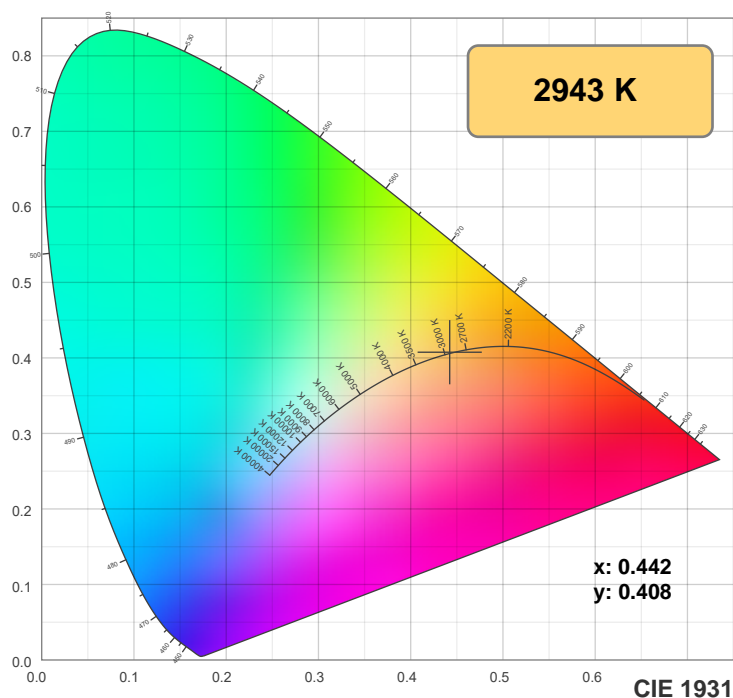
CIE 1931
x: 0.442
y: 0.408

Spectra

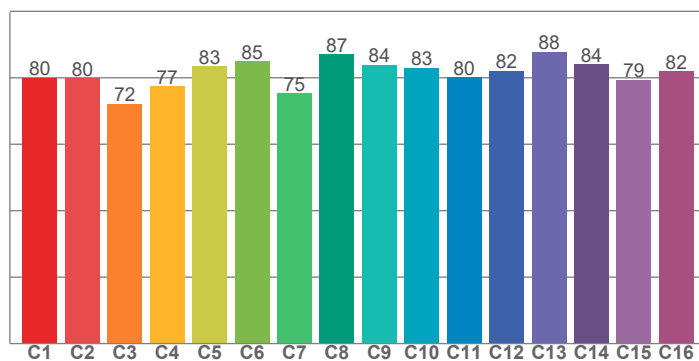


Power

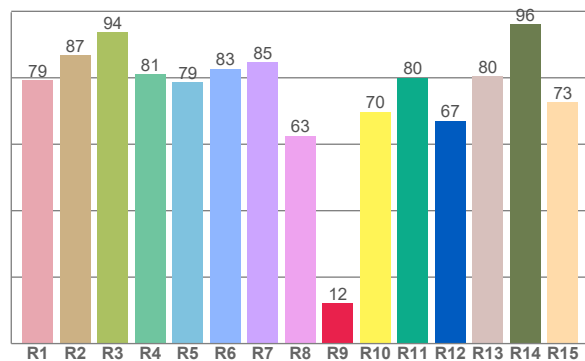




TM30: 81.2



CRI: 81.2 (R1-R8)



CRI R values, only R1-R8 are used to calculate final CRI value

R1	R2	R3	R4	R5	R6	R7	R8	R9	R10	R11	R12	R13	R14	R15
79.3	86.7	93.7	81.1	78.7	82.7	84.7	62.6	12.2	69.8	80.0	67.1	80.4	96.1	72.7

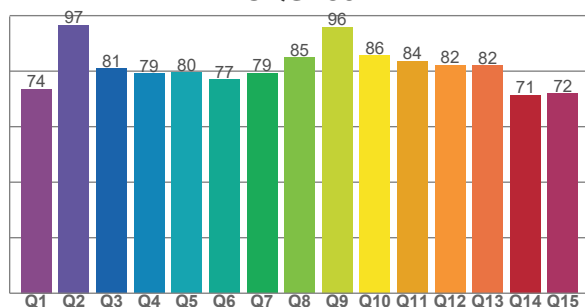
TM30 C values, 16 binned values out of total of 99 C values

C1	C2	C3	C4	C5	C6	C7	C8	C9	C10	C11	C12	C13	C14	C15	C16
80.1	79.8	72.2	77.5	83.5	84.9	75.4	87.0	84.0	82.9	80.1	82.1	87.8	84.0	79.3	81.9

CQS Q values

Q1	Q2	Q3	Q4	Q5	Q6	Q7	Q8	Q9	Q10	Q11	Q12	Q13	Q14	Q15
73.5	96.6	81.0	79.1	79.5	76.9	79.2	84.9	96.0	85.6	83.5	82.2	82.1	71.3	72.0

CQS: 80.1



Color parameters

Color temperature	Color rendering index	Red component	Color fidelity	Color gamut	Color quality scale	Color coordinate cie 1931	Color coordinate cie 1931	Color coordinate	Color coordinate	Color deviation from black body
CCT	CRI	CRI R9	TM30 Rf	TM30 Rg	CQS	x	y	u	v	Δuv
2943 K	81.2	12.2	81.2	99.5	80.1	0.442	0.408	0.253	0.349	0.0007

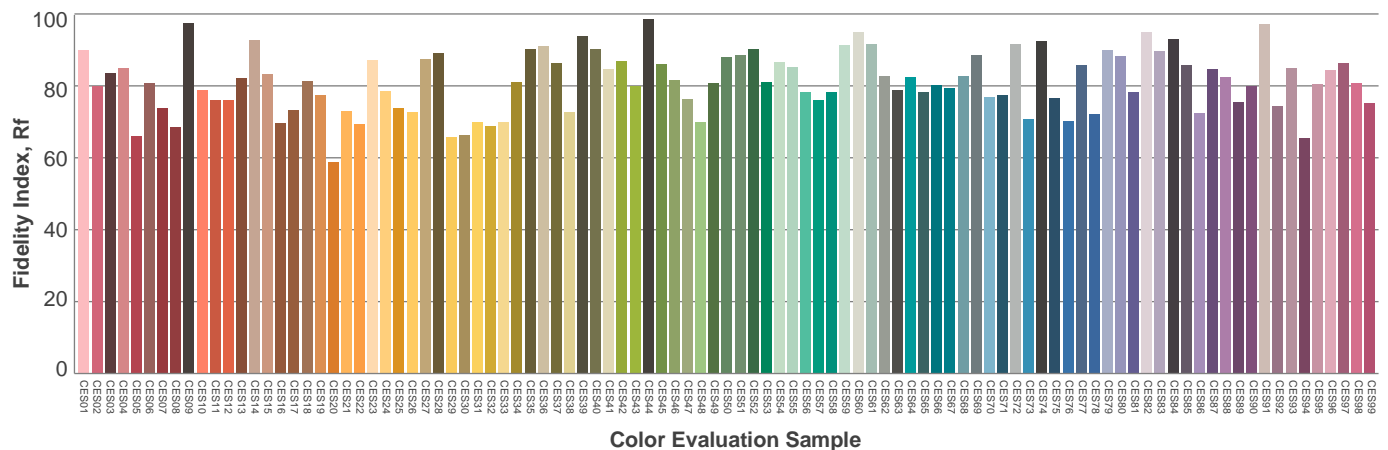
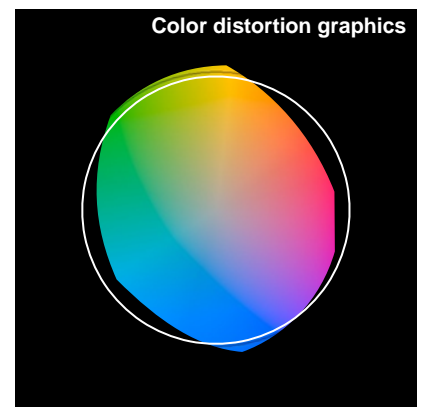
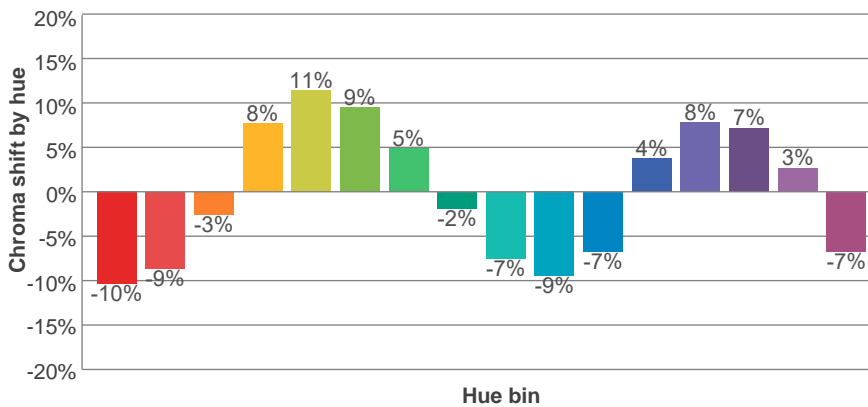
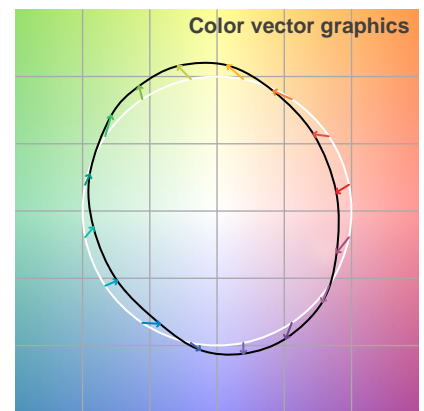
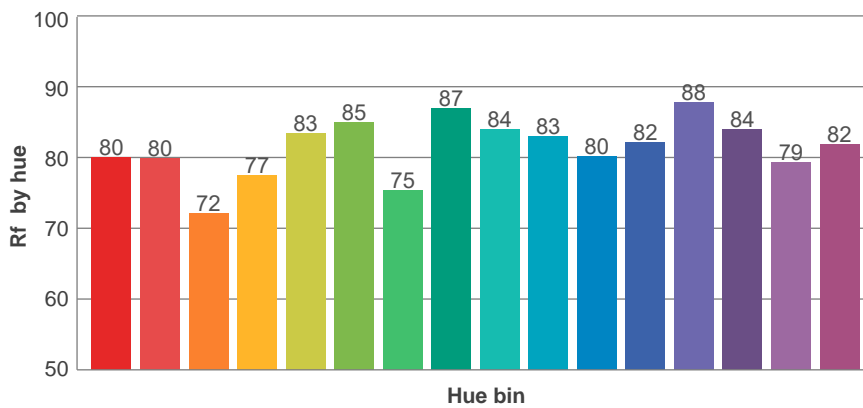
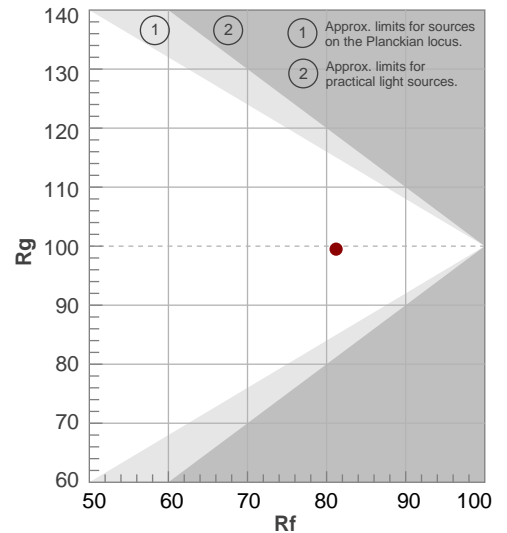
Rf 81.2

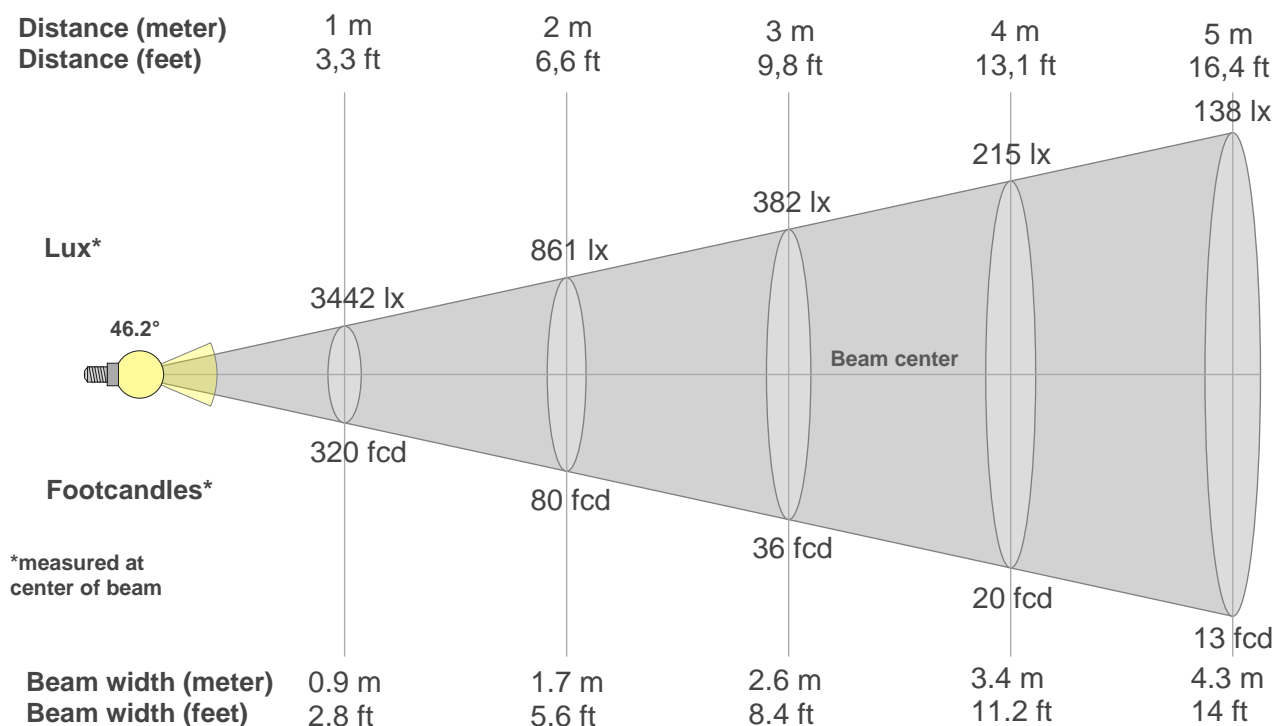
Fidelity index Rf

Rg 99.5

Gammut index Rg

Hue Bin	R _f	Graphic shifts (%)	
		Chroma	Hue
1	80	-10%	-4%
2	80	-9%	8%
3	72	-3%	15%
4	77	8%	14%
5	83	11%	8%
6	85	9%	-3%
7	75	5%	-15%
8	87	-2%	-8%
9	84	-7%	-6%
10	83	-9%	2%
11	80	-7%	11%
12	82	4%	8%
13	88	8%	-1%
14	84	7%	-10%
15	79	3%	-13%
16	82	-7%	-13%





Beam intensities from 1-20m

1m	2m	3m	4m	5m	6m	7m	8m	9m	10m	11m	12m	13m	14m	15m	16m	17m	18m	19m	20m
3.3ft	6.6ft	9.8ft	13.1ft	16.4ft	19.7ft	23ft	26.2ft	29.5ft	32.8ft	36.1ft	39.4ft	42.7ft	45.9ft	49.2ft	52.5ft	55.8ft	59.1ft	62.3ft	65.6ft
3442lx	861lx	382lx	215lx	138lx	96lx	70lx	54lx	42lx	34lx	28lx	24lx	20lx	18lx	15lx	13lx	12lx	11lx	10lx	9lx
319.8fcd	79.9fcd	35.5fcd	20fcd	12.8fcd	8.9fcd	6.5fcd	5fcd	3.9fcd	3.2fcd	2.6fcd	2.2fcd	1.9fcd	1.6fcd	1.4fcd	1.2fcd	1.1fcd	1fcd	0.9fcd	0.8fcd

Intensities in 0° c-plane

0°	2°	4°	6°	8°	10°	12°	14°	16°	18°	20°	22°	24°	26°	28°	30°	32°	34°	36°	38°
3442	3425	3400	3360	3262	3164	3000	2810	2603	2345	2087	1848	1617	1399	1218	1037	883	736	597	474
100%	100%	99%	98%	95%	92%	87%	82%	76%	68%	61%	54%	47%	41%	35%	30%	26%	21%	17%	14%

Intensities in 90° c-plane

0°	2°	4°	6°	8°	10°	12°	14°	16°	18°	20°	22°	24°	26°	28°	30°	32°	34°	36°	38°
3442	3425	3400	3360	3262	3164	3000	2810	2603	2345	2087	1848	1617	1399	1218	1037	883	736	597	474
100%	100%	99%	98%	95%	92%	87%	82%	76%	68%	61%	54%	47%	41%	35%	30%	26%	21%	17%	14%

Intensities in 180° c-plane

0°	2°	4°	6°	8°	10°	12°	14°	16°	18°	20°	22°	24°	26°	28°	30°	32°	34°	36°	38°
3442	3425	3400	3360	3262	3164	3000	2810	2603	2345	2087	1848	1617	1399	1218	1037	883	736	597	474
100%	100%	99%	98%	95%	92%	87%	82%	76%	68%	61%	54%	47%	41%	35%	30%	26%	21%	17%	14%

Intensities in 270° c-plane

0°	2°	4°	6°	8°	10°	12°	14°	16°	18°	20°	22°	24°	26°	28°	30°	32°	34°	36°	38°
3442	3425	3400	3360	3262	3164	3000	2810	2603	2345	2087	1848	1617	1399	1218	1037	883	736	597	474
100%	100%	99%	98%	95%	92%	87%	82%	76%	68%	61%	54%	47%	41%	35%	30%	26%	21%	17%	14%

Beam angle 50%	Field angle 10%	Cutoff angle 2,5%	Intensity ratio in 120° cone	Intensity ratio in 90° cone
46.2°	80.2°	93°	99.6%	98.3%