

Light efficiency:

54 Lumen/Watt

Light quality:

CRI: 96.3

Color temperature:

3130 K

Output: 1389 lm

Peak: 1968 cd

Power: 25.5 W

PF: 0.98

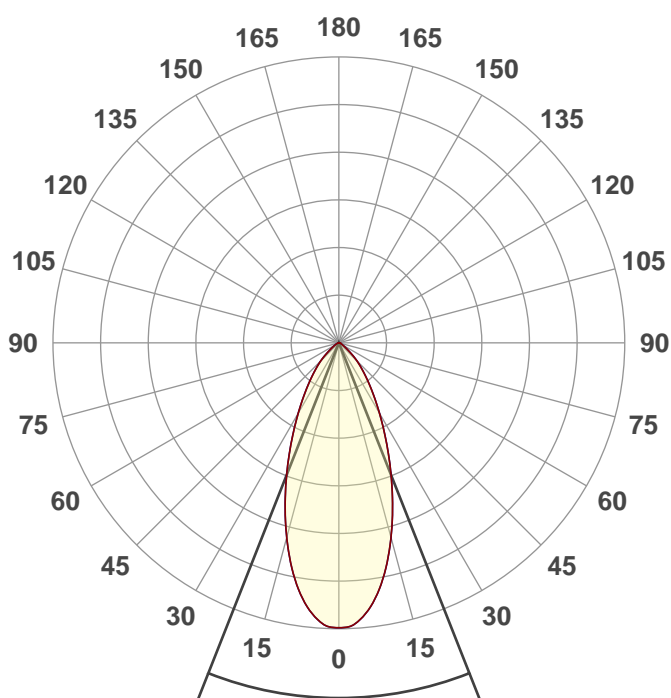


Product name:

NU3-RD-WD-20LM-3018-97-
HE45-120-DIM10-NC-WH-WH

Date and time:

6/22/2018 2:08:51 PM



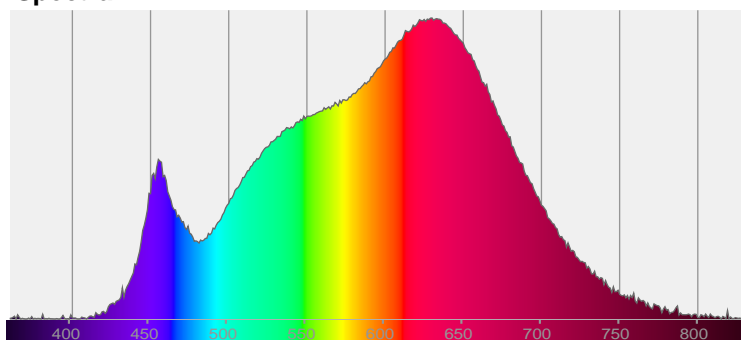
Beam angle

43.1°

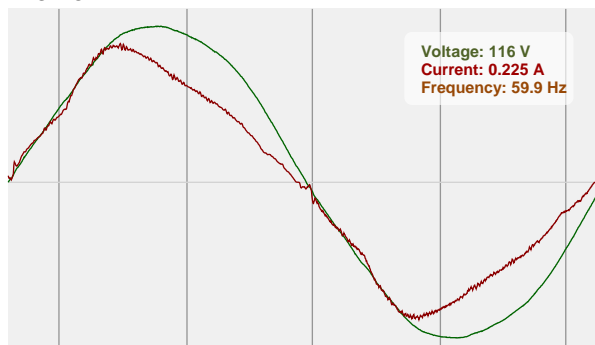


CIE 1931
x: 0.430
y: 0.405

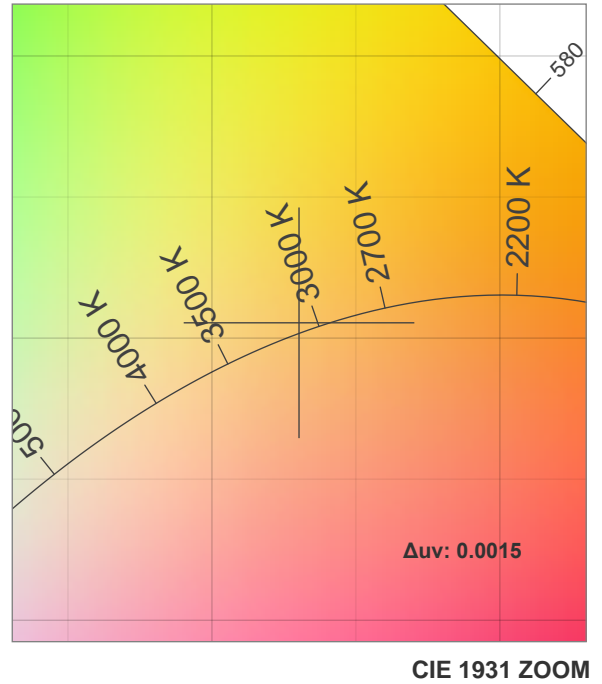
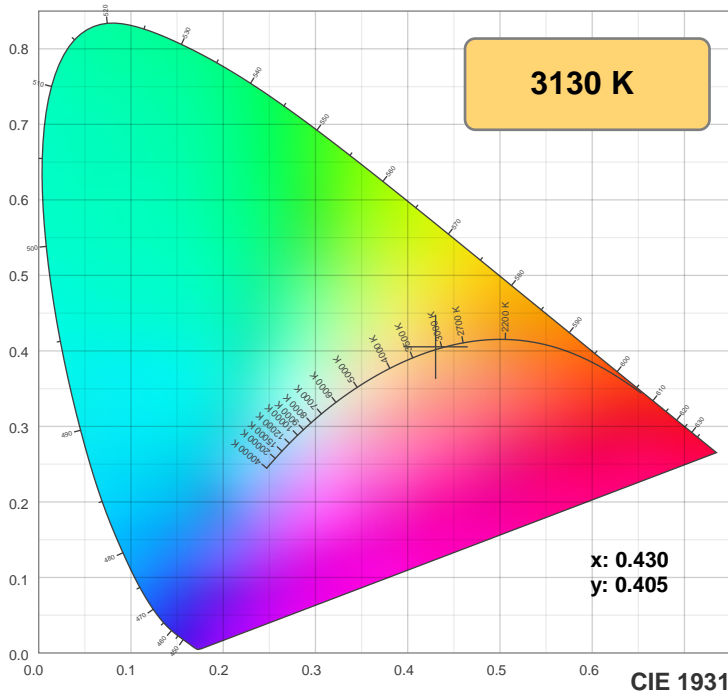
Spectra



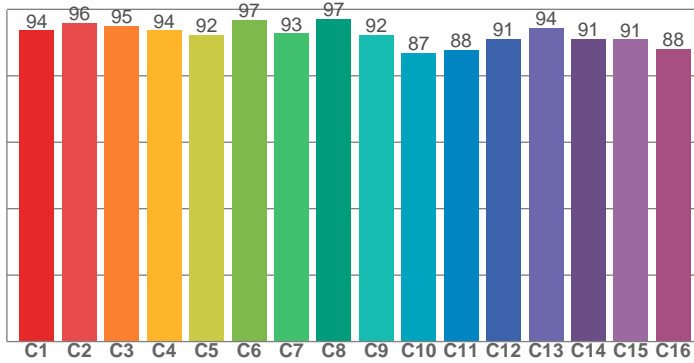
Power



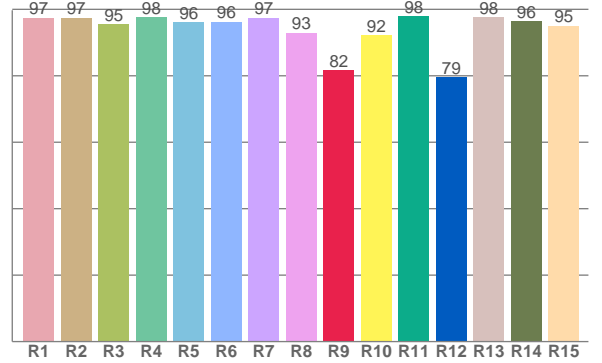
Color details



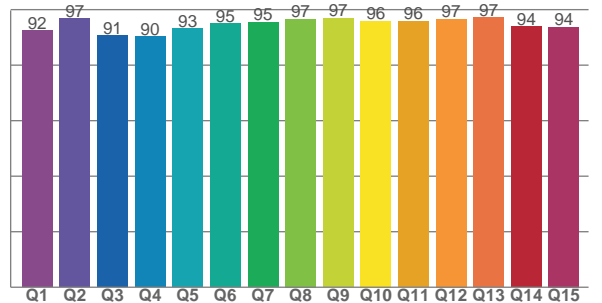
TM30: 92.5



CRI: 96.3 (R1-R8)



CQS: 94.1



CRI R values, only R1-R8 are used to calculate final CRI value

R1	R2	R3	R4	R5	R6	R7	R8	R9	R10	R11	R12	R13	R14	R15
97.5	97.5	95.5	97.6	96.1	96.2	97.5	92.9	81.8	92.1	97.9	79.5	97.6	96.5	95.0

TM30 C values, 16 binned values out of total of 99 C values

C1	C2	C3	C4	C5	C6	C7	C8	C9	C10	C11	C12	C13	C14	C15	C16
93.7	96.0	95.0	93.7	92.3	96.9	92.8	97.1	92.2	86.9	87.8	91.2	94.4	91.1	91.0	88.0

CQS Q values

Q1	Q2	Q3	Q4	Q5	Q6	Q7	Q8	Q9	Q10	Q11	Q12	Q13	Q14	Q15
92.4	96.7	90.7	90.3	93.2	94.9	95.4	96.7	96.9	95.9	95.8	96.6	97.1	93.8	93.7

Color parameters

Color temperature	Color rendering index	Red component	Color fidelity	Color gamut	Color quality scale	Color coordinate cie 1931	Color coordinate cie 1931	Color coordinate	Color coordinate	Color deviation from black body
CCT	CRI	CRI R9	TM30 Rf	TM30 Rg	CQS	x	y	u	v	Δuv
3130 K	96.3	81.8	92.5	99.3	94.1	0.430	0.405	0.246	0.347	0.0015

TM30 details

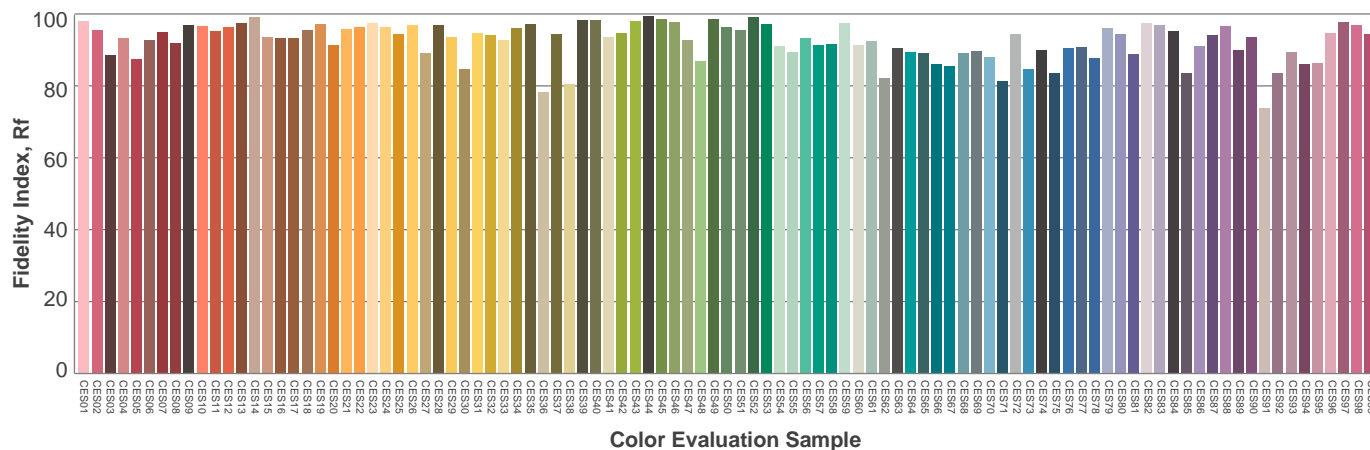
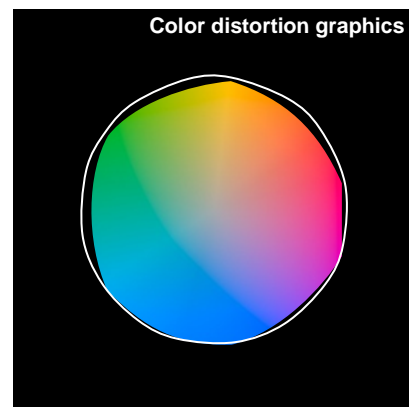
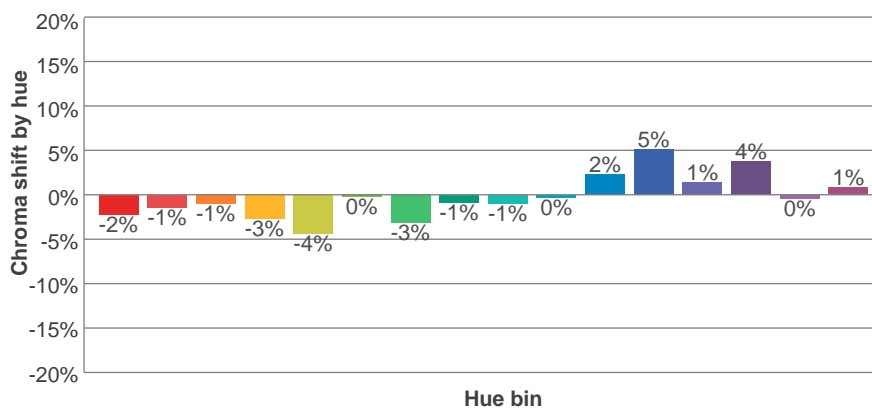
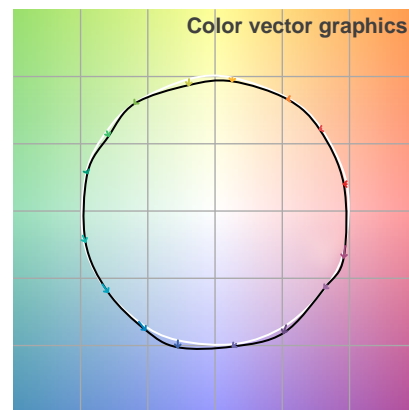
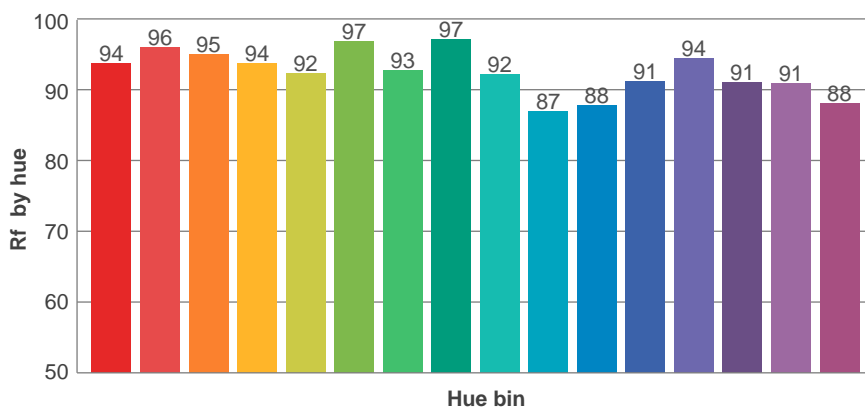
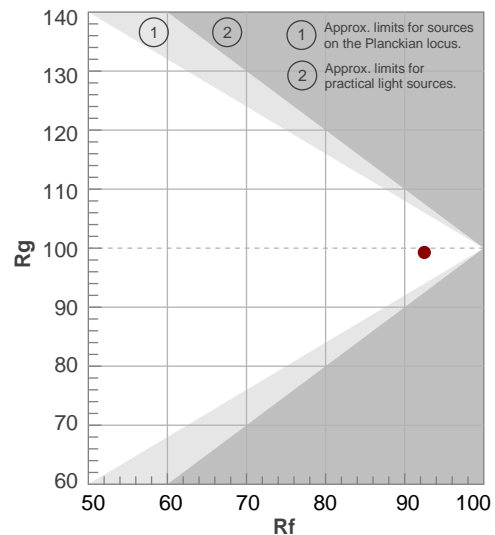
Rf 92.5

Fidelity index Rf

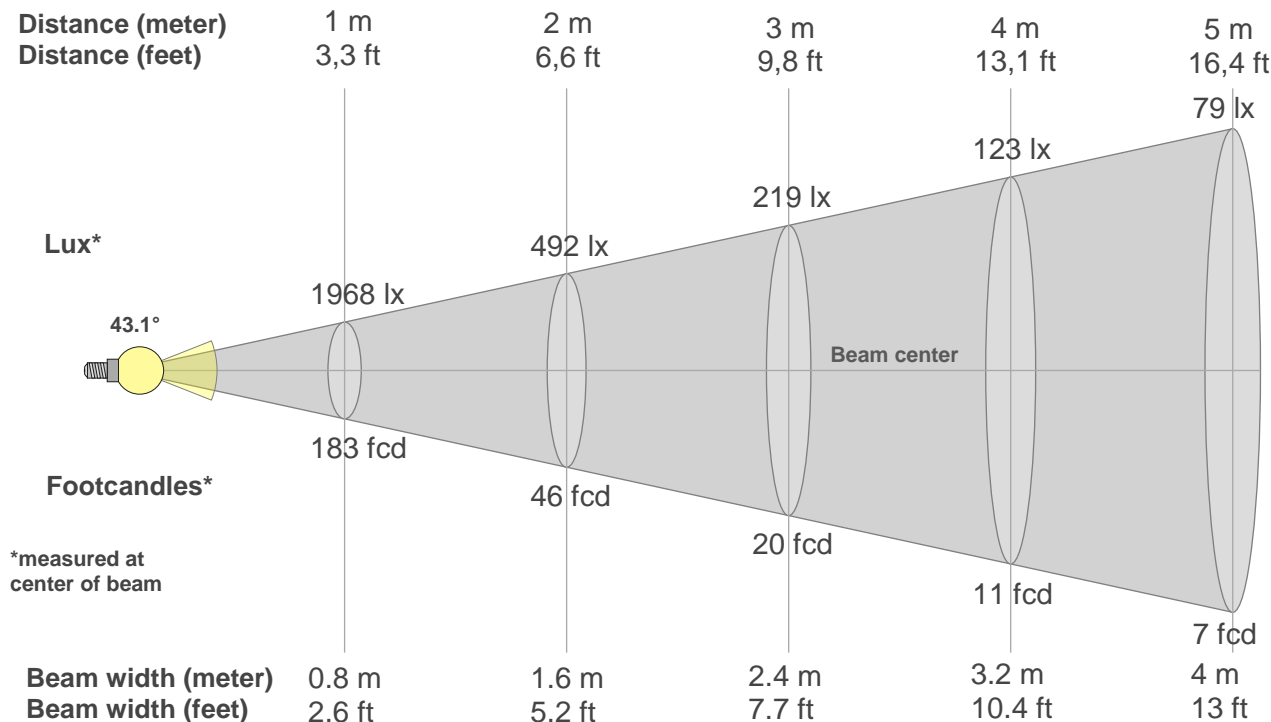
Rg 99.3

Gamut index Rg

Hue Bin	R _f	Graphic shifts (%)	
		Chroma	Hue
1	94	-2%	0%
2	96	-1%	0%
3	95	-1%	1%
4	94	-3%	0%
5	92	-4%	1%
6	97	0%	1%
7	93	-3%	2%
8	97	-1%	1%
9	92	-1%	5%
10	87	0%	7%
11	88	2%	7%
12	91	5%	1%
13	94	1%	-3%
14	91	4%	-5%
15	91	0%	-3%
16	88	1%	-9%



Beam details



Beam intensities from 1-20m

1m	2m	3m	4m	5m	6m	7m	8m	9m	10m	11m	12m	13m	14m	15m	16m	17m	18m	19m	20m
3.3ft	6.6ft	9.8ft	13.1ft	16.4ft	19.7ft	23ft	26.2ft	29.5ft	32.8ft	36.1ft	39.4ft	42.7ft	45.9ft	49.2ft	52.5ft	55.8ft	59.1ft	62.3ft	65.6ft
1968lx	492lx	219lx	123lx	79lx	55lx	40lx	31lx	24lx	20lx	16lx	14lx	12lx	10lx	9lx	8lx	7lx	6lx	5lx	5lx
182.9fcd	45.7fcd	20.3fcd	11.4fcd	7.3fcd	5.1fcd	3.7fcd	2.9fcd	2.3fcd	1.8fcd	1.5fcd	1.3fcd	1.1fcd	0.9fcd	0.8fcd	0.7fcd	0.6fcd	0.6fcd	0.5fcd	0.5fcd

Intensities in 0° c-plane

0°	2°	4°	6°	8°	10°	12°	14°	16°	18°	20°	22°	24°	26°	28°	30°	32°	34°	36°	38°
1968	1968	1930	1869	1789	1692	1581	1458	1332	1204	1079	959	845	742	648	564	489	422	365	314
100%	100%	98%	95%	91%	86%	80%	74%	68%	61%	55%	49%	43%	38%	33%	29%	25%	21%	19%	16%

Intensities in 90° c-plane

0°	2°	4°	6°	8°	10°	12°	14°	16°	18°	20°	22°	24°	26°	28°	30°	32°	34°	36°	38°
1968	1968	1930	1869	1789	1692	1581	1458	1332	1204	1079	959	845	742	648	564	489	422	365	314
100%	100%	98%	95%	91%	86%	80%	74%	68%	61%	55%	49%	43%	38%	33%	29%	25%	21%	19%	16%

Intensities in 180° c-plane

0°	2°	4°	6°	8°	10°	12°	14°	16°	18°	20°	22°	24°	26°	28°	30°	32°	34°	36°	38°
1968	1968	1930	1869	1789	1692	1581	1458	1332	1204	1079	959	845	742	648	564	489	422	365	314
100%	100%	98%	95%	91%	86%	80%	74%	68%	61%	55%	49%	43%	38%	33%	29%	25%	21%	19%	16%

Intensities in 270° c-plane

0°	2°	4°	6°	8°	10°	12°	14°	16°	18°	20°	22°	24°	26°	28°	30°	32°	34°	36°	38°
1968	1968	1930	1869	1789	1692	1581	1458	1332	1204	1079	959	845	742	648	564	489	422	365	314
100%	100%	98%	95%	91%	86%	80%	74%	68%	61%	55%	49%	43%	38%	33%	29%	25%	21%	19%	16%

Beam angle 50%	Field angle 10%	Cutoff angle 2,5%	Intensity ratio in 120° cone	Intensity ratio in 90° cone
43.1°	87.8°	111°	97.7%	90.2%