

Light efficiency:

85 Lumen/Watt

Light quality:

CRI: 81.4

Color temperature:

3043 K

Output: 2362 lm

Peak: 2612 cd

Power: 27.7 W

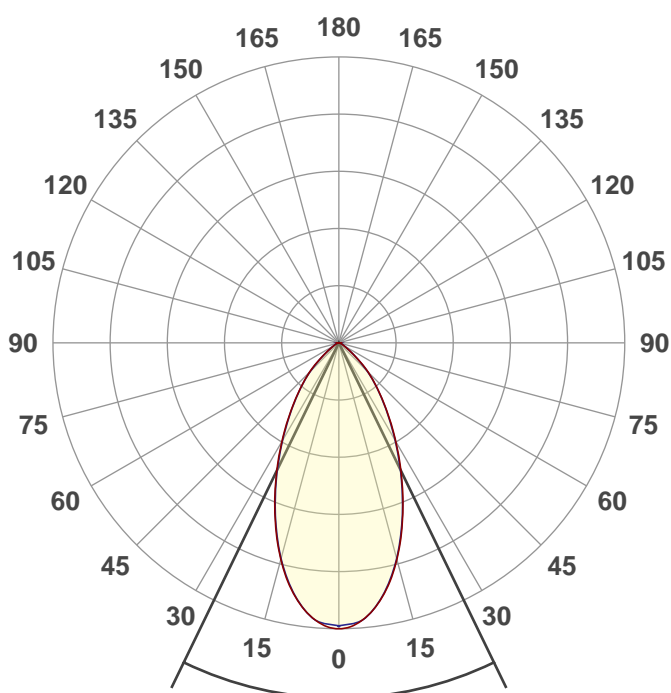
PF: 0.98



NU3-RD-SW-30LM-30K-80-50D-120-DIM10-NC-WH-WH

Date and time:

11/9/2020 9:22:20 AM



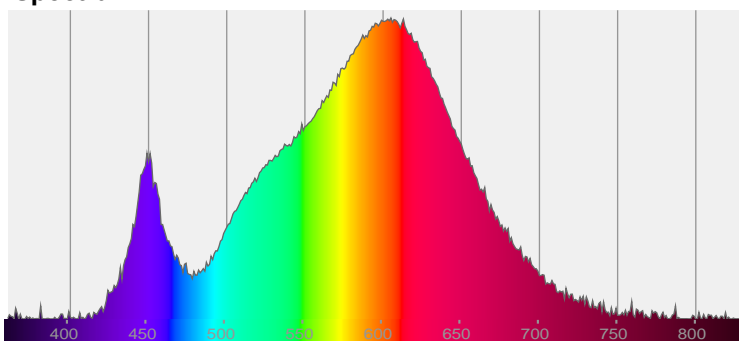
Beam angle

51.8°

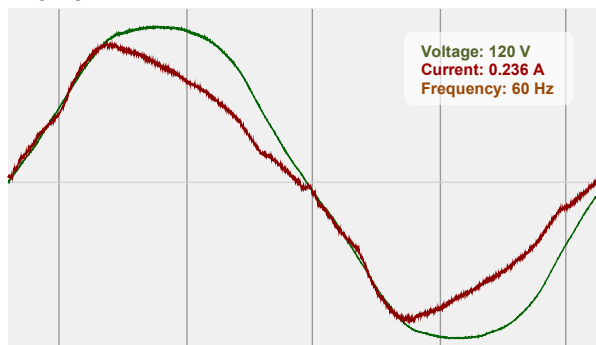


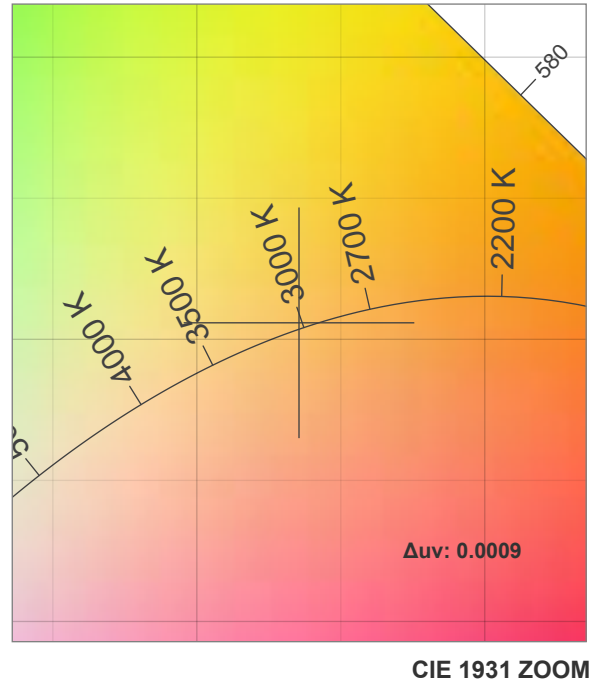
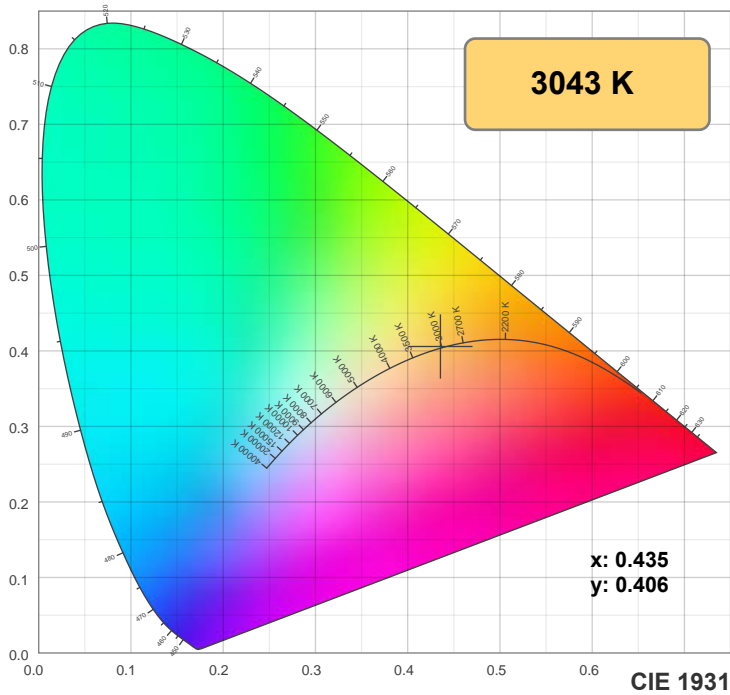
CIE 1931
x: 0.435
y: 0.406

Spectra

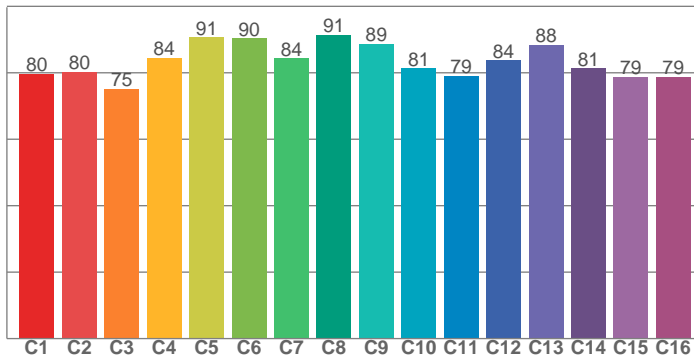


Power

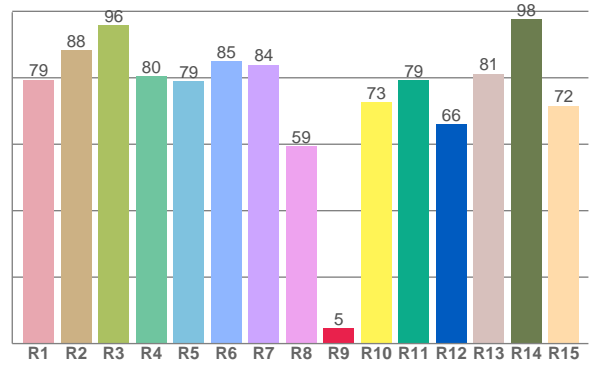




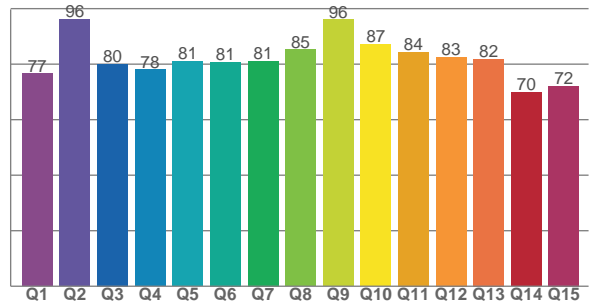
TM30: 83.5



CRI: 81.4 (R1-R8)



CQS: 80.7



CRI R values, only R1-R8 are used to calculate final CRI value

R1	R2	R3	R4	R5	R6	R7	R8	R9	R10	R11	R12	R13	R14	R15
79.4	88.2	95.9	80.4	79.0	84.9	83.9	59.5	4.6	72.7	79.2	66.0	81.2	97.5	71.6

TM30 C values, 16 binned values out of total of 99 C values

C1	C2	C3	C4	C5	C6	C7	C8	C9	C10	C11	C12	C13	C14	C15	C16
79.6	80.2	75.1	84.5	90.6	90.4	84.4	91.5	88.8	81.3	79.1	83.7	88.4	81.4	78.7	78.8

CQS Q values

Q1	Q2	Q3	Q4	Q5	Q6	Q7	Q8	Q9	Q10	Q11	Q12	Q13	Q14	Q15
76.6	96.1	80.1	78.0	81.0	80.7	81.2	85.3	96.1	87.2	84.4	82.6	81.8	69.9	72.1

Color parameters

Color temperature	Color rendering index	Red component	Color fidelity	Color gamut	Color quality scale	Color coordinate cie 1931	Color coordinate cie 1931	Color coordinate	Color coordinate	Color deviation from black body
CCT	CRI	CRI R9	TM30 Rf	TM30 Rg	CQS	x	y	u	v	Δuv
3043 K	81.4	4.6	83.5	97.0	80.7	0.435	0.406	0.249	0.348	0.0009

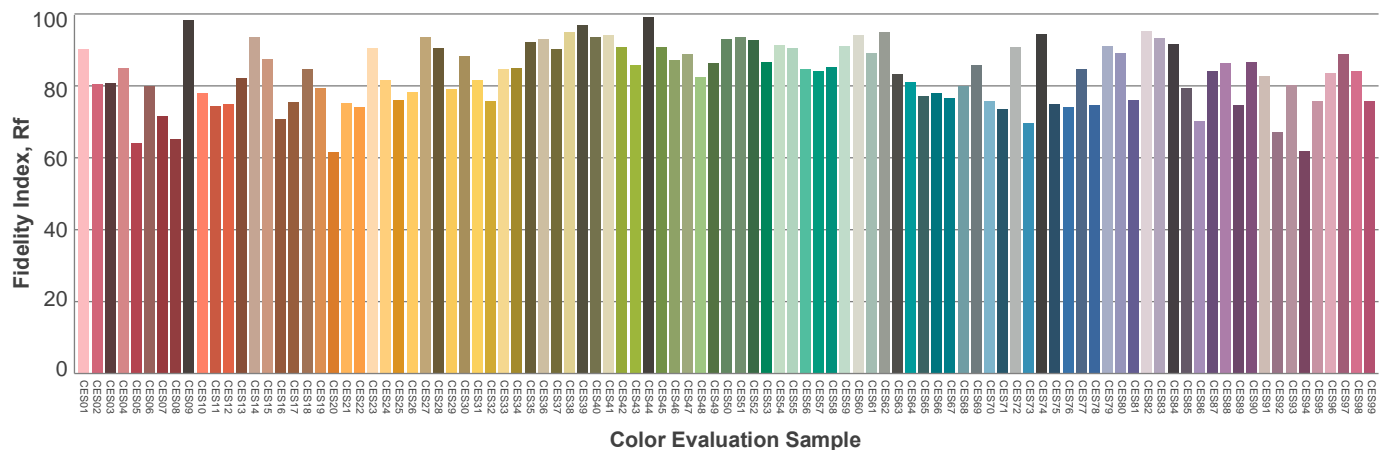
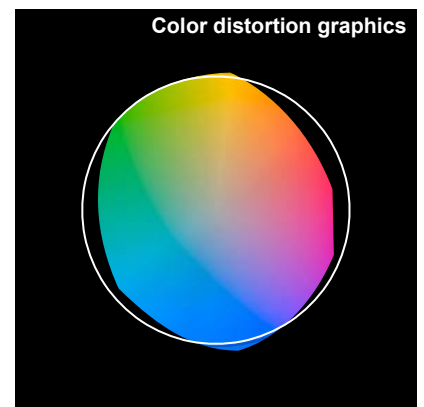
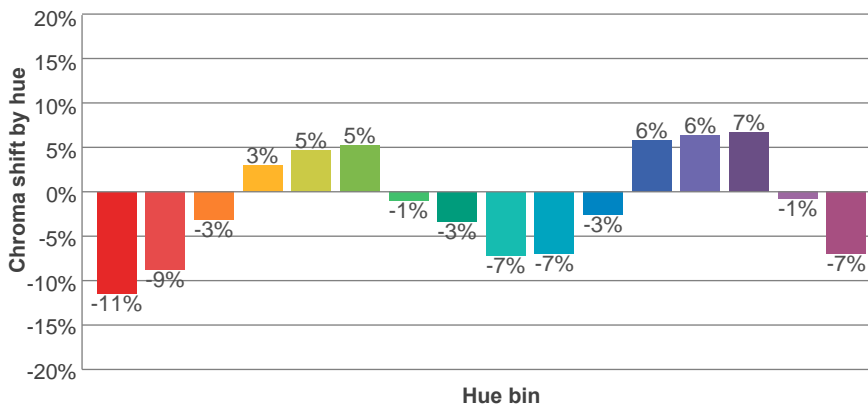
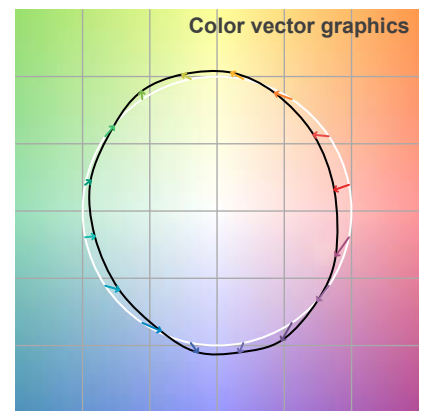
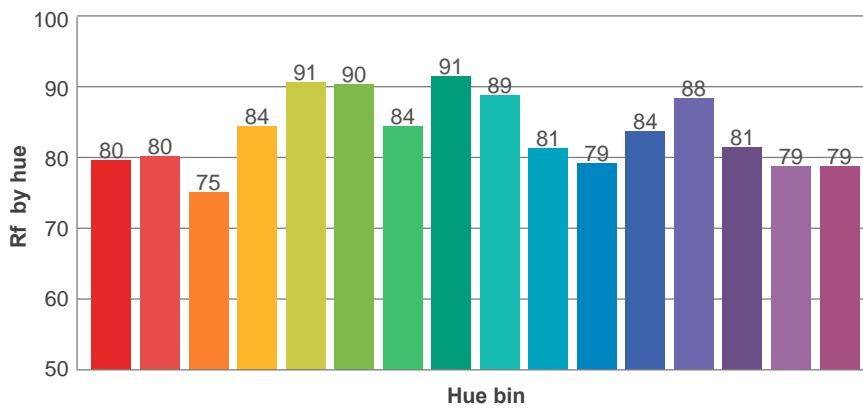
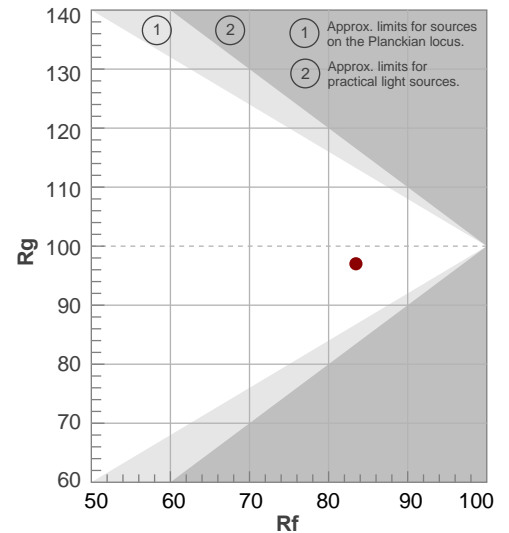
Rf 83.5

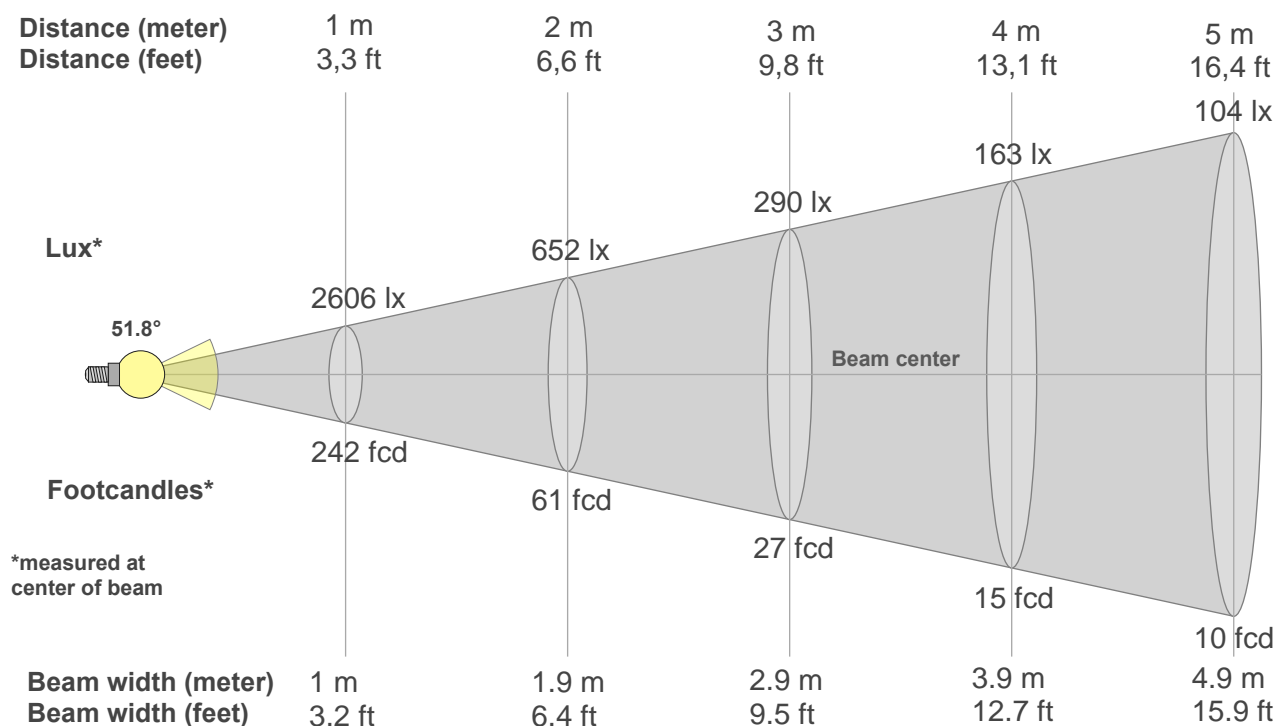
Fidelity index Rf

Rg 97.0

Gammut index Rg

Hue Bin	R _f	Graphic shifts (%)	
		Chroma	Hue
1	80	-11%	-2%
2	80	-9%	7%
3	75	-3%	13%
4	84	3%	10%
5	91	5%	5%
6	90	5%	-3%
7	84	-1%	-10%
8	91	-3%	-4%
9	89	-7%	1%
10	81	-7%	8%
11	79	-3%	15%
12	84	6%	6%
13	88	6%	-4%
14	81	7%	-13%
15	79	-1%	-14%
16	79	-7%	-15%





Beam intensities from 1-20m

1m	2m	3m	4m	5m	6m	7m	8m	9m	10m	11m	12m	13m	14m	15m	16m	17m	18m	19m	20m
3.3ft	6.6ft	9.8ft	13.1ft	16.4ft	19.7ft	23ft	26.2ft	29.5ft	32.8ft	36.1ft	39.4ft	42.7ft	45.9ft	49.2ft	52.5ft	55.8ft	59.1ft	62.3ft	65.6ft
2606lx	652lx	290lx	163lx	104lx	72lx	53lx	41lx	32lx	26lx	22lx	18lx	15lx	13lx	12lx	10lx	9lx	8lx	7lx	7lx
242.1fcd	60.5fcd	26.9fcd	15.1fcd	9.7fcd	6.7fcd	4.9fcd	3.8fcd	3fcd	2.4fcd	2fcd	1.7fcd	1.4fcd	1.2fcd	1.1fcd	0.9fcd	0.8fcd	0.7fcd	0.7fcd	0.6fcd

Intensities in 0° c-plane

0°	2°	4°	6°	8°	10°	12°	14°	16°	18°	20°	22°	24°	26°	28°	30°	32°	34°	36°	38°
2606	2612	2567	2513	2442	2345	2248	2120	1991	1856	1714	1574	1438	1301	1174	1052	934	831	728	642
100%	100%	98%	96%	94%	90%	86%	81%	76%	71%	66%	60%	55%	50%	45%	40%	36%	32%	28%	25%

Intensities in 90° c-plane

0°	2°	4°	6°	8°	10°	12°	14°	16°	18°	20°	22°	24°	26°	28°	30°	32°	34°	36°	38°
2606	2582	2564	2513	2432	2348	2231	2113	1982	1843	1704	1563	1423	1290	1160	1036	925	814	722	633
100%	99%	98%	96%	93%	90%	86%	81%	76%	71%	65%	60%	55%	50%	45%	40%	35%	31%	28%	24%

Intensities in 180° c-plane

0°	2°	4°	6°	8°	10°	12°	14°	16°	18°	20°	22°	24°	26°	28°	30°	32°	34°	36°	38°
2606	2612	2567	2513	2442	2345	2248	2120	1991	1856	1714	1574	1438	1301	1174	1052	934	831	728	642
100%	100%	98%	96%	94%	90%	86%	81%	76%	71%	66%	60%	55%	50%	45%	40%	36%	32%	28%	25%

Intensities in 270° c-plane

0°	2°	4°	6°	8°	10°	12°	14°	16°	18°	20°	22°	24°	26°	28°	30°	32°	34°	36°	38°
2606	2582	2564	2513	2432	2348	2231	2113	1982	1843	1704	1563	1423	1290	1160	1036	925	814	722	633
100%	99%	98%	96%	93%	90%	86%	81%	76%	71%	65%	60%	55%	50%	45%	40%	35%	31%	28%	24%

Beam angle 50°	Field angle 10°	Cutoff angle 2,5%	Intensity ratio in 120° cone	Intensity ratio in 90° cone
{B_ANG}°	96.8°	117.4°	97.4%	88.2%