

Light efficiency:

76 Lumen/Watt

Light quality:

CRI: 81.5

Color temperature:

3059 K

Output: 2895 lm

Peak: 9167 cd

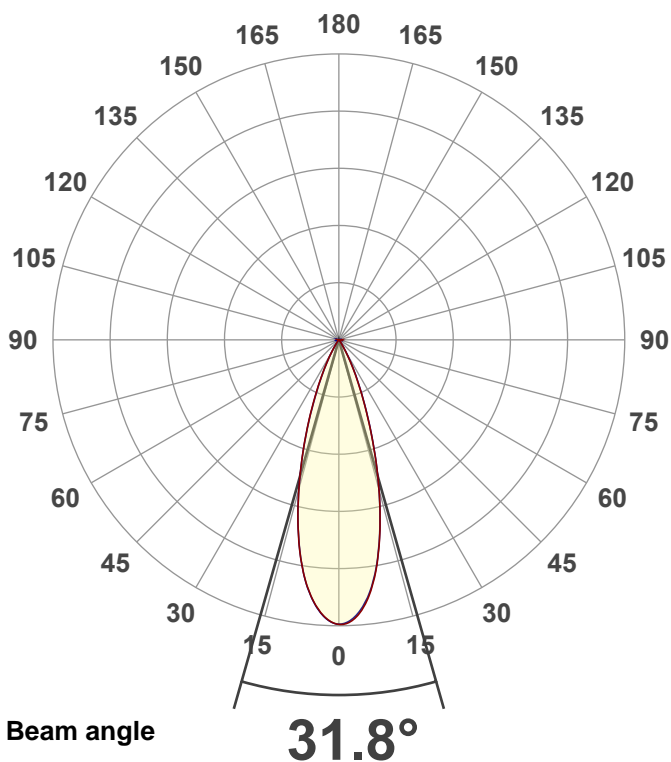
Power: 37.9 W

PF: 0.98



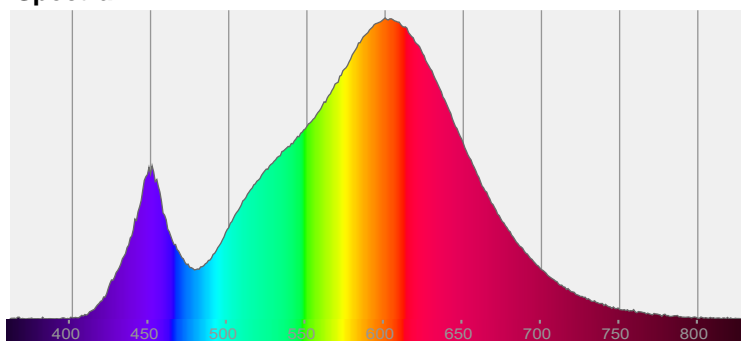
NU3-RA-SW-40LM-30K-80-35D-NA-SBL-WH

Date and time:  
5/12/2022 2:31:25 PM

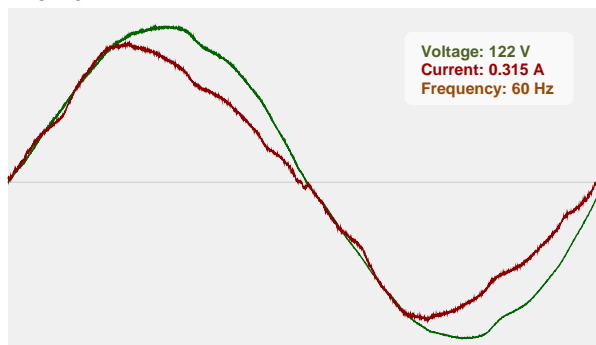


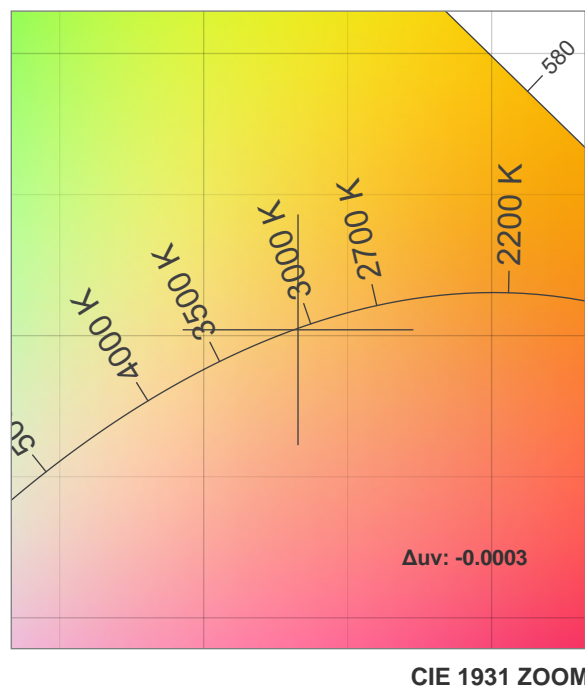
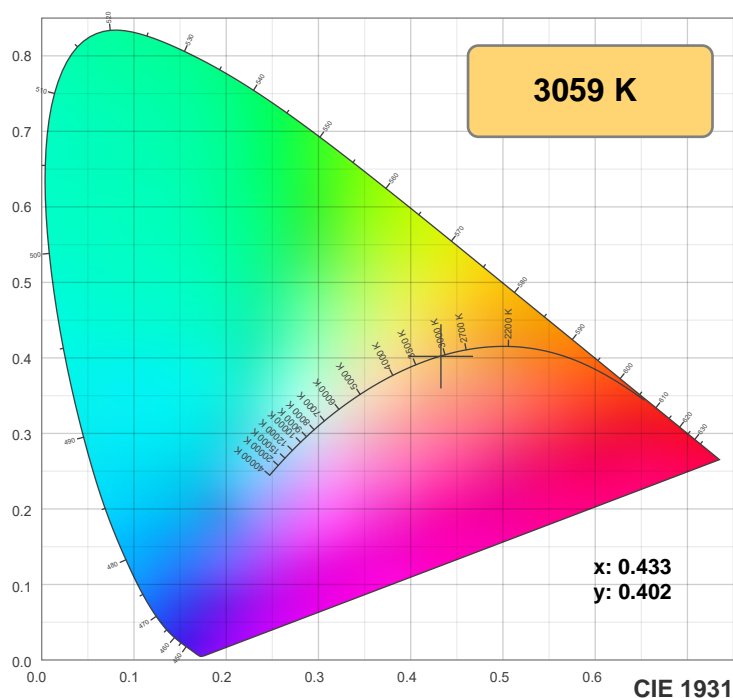
CIE 1931  
x: 0.433  
y: 0.402

Spectra

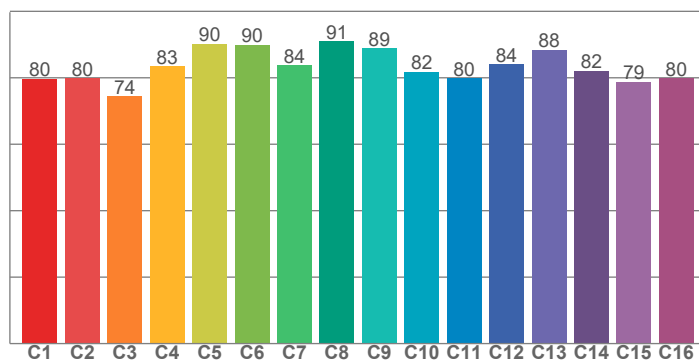


Power

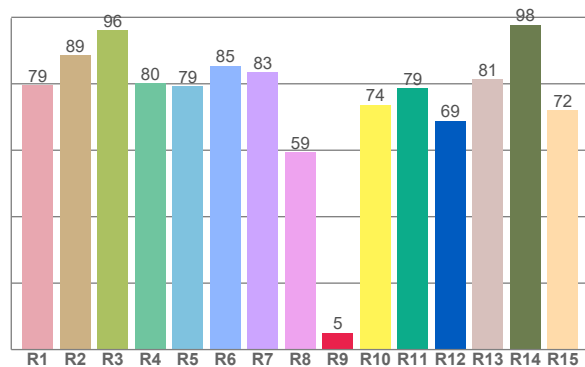




TM30: 83.4



CRI: 81.5 (R1-R8)



CRI R values, only R1-R8 are used to calculate final CRI value

R1	R2	R3	R4	R5	R6	R7	R8	R9	R10	R11	R12	R13	R14	R15
79.5	88.6	96.0	80.1	79.3	85.5	83.5	59.3	5.1	73.7	78.7	68.8	81.4	97.8	72.0

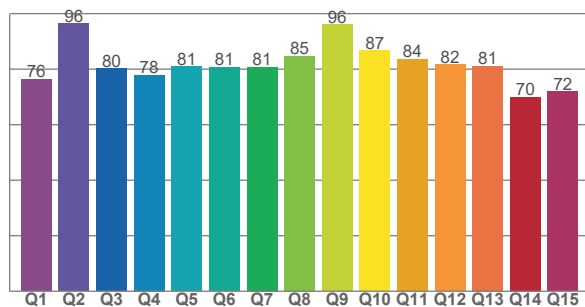
TM30 C values, 16 binned values out of total of 99 C values

C1	C2	C3	C4	C5	C6	C7	C8	C9	C10	C11	C12	C13	C14	C15	C16
79.7	79.8	74.4	83.4	90.3	89.8	83.8	90.9	88.9	81.9	79.9	84.0	88.5	82.0	78.8	79.8

CQS Q values

Q1	Q2	Q3	Q4	Q5	Q6	Q7	Q8	Q9	Q10	Q11	Q12	Q13	Q14	Q15
76.4	96.4	80.2	77.9	80.9	80.7	80.9	84.8	96.1	86.8	83.6	81.6	81.1	69.9	72.0

CQS: 80.5



## Color parameters

Color temperature	Color rendering index	Red component	Color fidelity	Color gamut	Color quality scale	Color coordinate cie 1931	Color coordinate cie 1931	Color coordinate	Color coordinate	Color deviation from black body
CCT	CRI	CRI R9	TM30 Rf	TM30 Rg	CQS	x	y	u	v	$\Delta uv$
3059 K	81.5	5.1	83.4	97.2	80.5	0.433	0.402	0.249	0.347	-0.0003

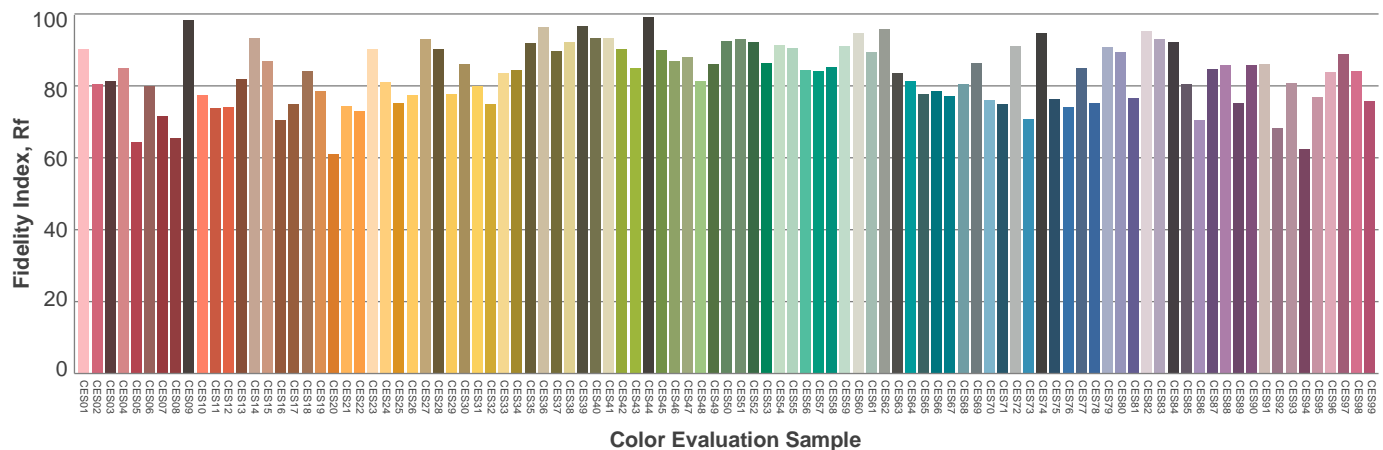
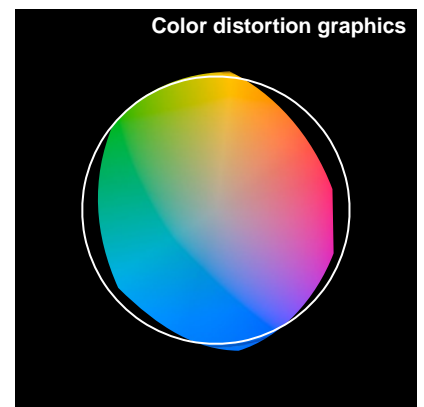
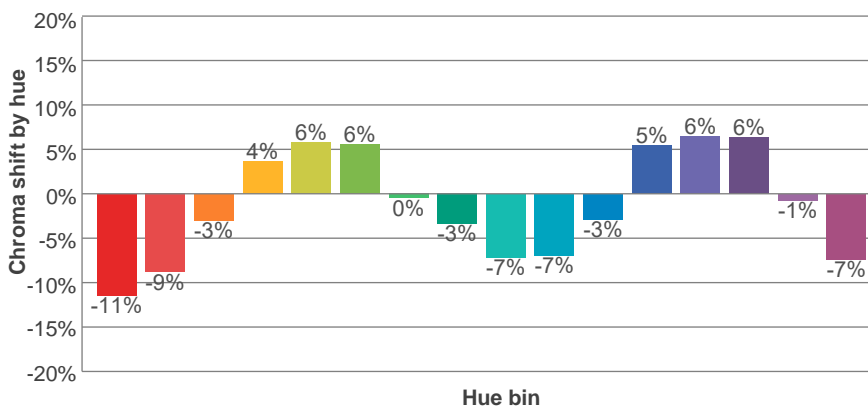
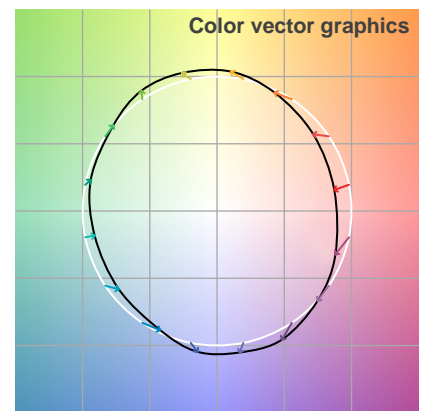
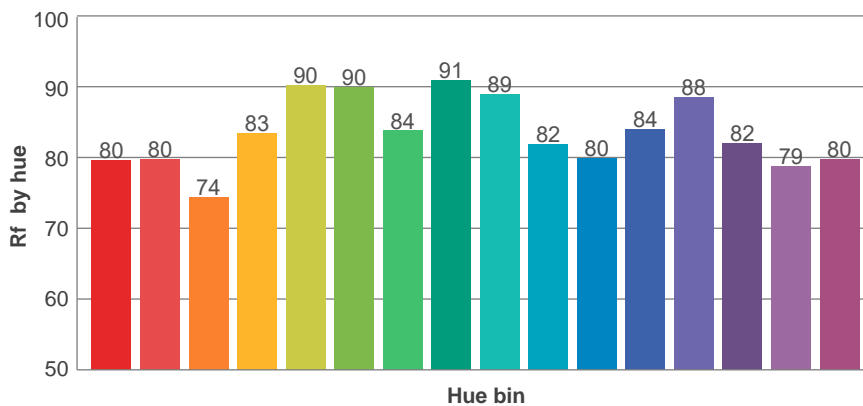
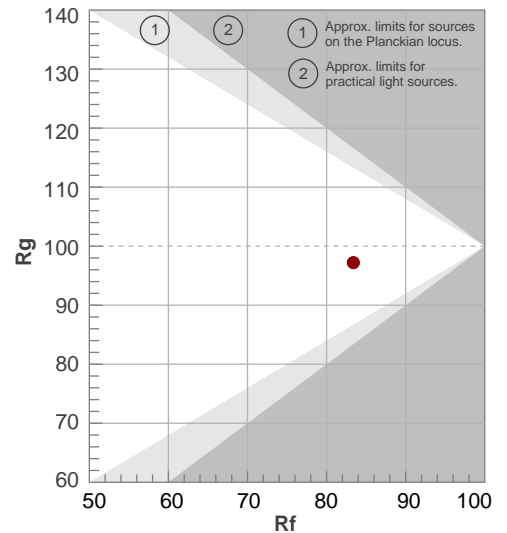
**Rf 83.4**

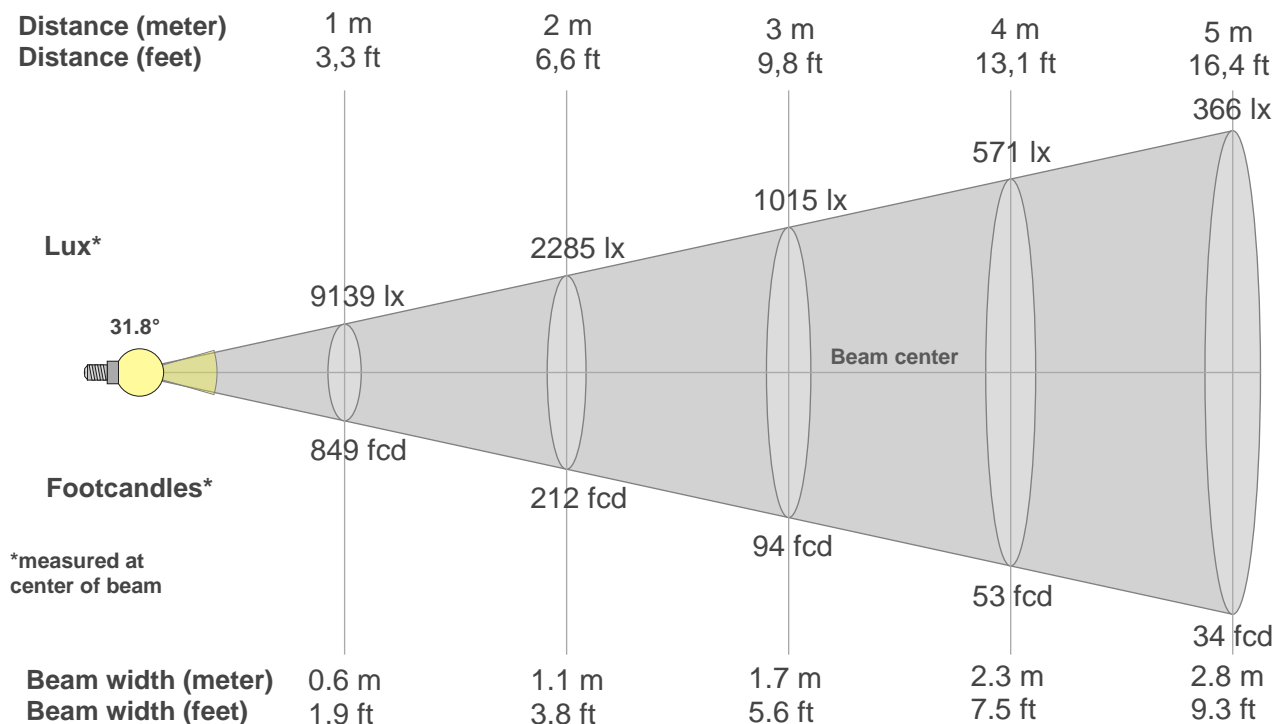
Fidelity index Rf

**Rg 97.2**

Gamut index Rg

Hue Bin	R <sub>f</sub>	Graphic shifts (%)	
		Chroma	Hue
1	80	-11%	-2%
2	80	-9%	8%
3	74	-3%	13%
4	83	4%	10%
5	90	6%	6%
6	90	6%	-3%
7	84	0%	-10%
8	91	-3%	-4%
9	89	-7%	0%
10	82	-7%	8%
11	80	-3%	14%
12	84	5%	6%
13	88	6%	-4%
14	82	6%	-13%
15	79	-1%	-14%
16	80	-7%	-14%





#### Beam intensities from 1-20m

1m	2m	3m	4m	5m	6m	7m	8m	9m	10m	11m	12m	13m	14m	15m	16m	17m	18m	19m	20m
3.3ft	6.6ft	9.8ft	13.1ft	16.4ft	19.7ft	23ft	26.2ft	29.5ft	32.8ft	36.1ft	39.4ft	42.7ft	45.9ft	49.2ft	52.5ft	55.8ft	59.1ft	62.3ft	65.6ft
9139lx	2285lx	1015lx	571lx	366lx	254lx	187lx	143lx	113lx	91lx	76lx	63lx	54lx	47lx	41lx	36lx	32lx	28lx	25lx	23lx
849fcd	212.3fcd	94.3fcd	53.1fcd	34fcd	23.6fcd	17.3fcd	13.3fcd	10.5fcd	8.5fcd	7fcd	5.9fcd	5fcd	4.3fcd	3.8fcd	3.3fcd	2.9fcd	2.6fcd	2.4fcd	2.1fcd

#### Intensities in 0° c-plane

0°	2°	4°	6°	8°	10°	12°	14°	16°	18°	20°	22°	24°	26°	28°	30°	32°	34°	36°	38°
9139	9103	8875	8461	7890	7175	6346	5454	4543	3655	2846	2144	1553	1118	753	472	278	160	99	64
100%	100%	97%	93%	86%	79%	69%	60%	50%	40%	31%	23%	17%	12%	8%	5%	3%	2%	1%	1%

#### Intensities in 90° c-plane

0°	2°	4°	6°	8°	10°	12°	14°	16°	18°	20°	22°	24°	26°	28°	30°	32°	34°	36°	38°
9139	9074	8810	8405	7851	7153	6329	5438	4536	3663	2862	2165	1594	1154	784	490	280	156	96	60
100%	99%	96%	92%	86%	78%	69%	60%	50%	40%	31%	24%	17%	13%	9%	5%	3%	2%	1%	1%

#### Intensities in 180° c-plane

0°	2°	4°	6°	8°	10°	12°	14°	16°	18°	20°	22°	24°	26°	28°	30°	32°	34°	36°	38°
9139	9016	8744	8336	7795	7090	6286	5423	4545	3691	2920	2236	1659	1188	812	529	323	189	112	71
100%	99%	96%	91%	85%	78%	69%	59%	50%	40%	32%	24%	18%	13%	9%	6%	4%	2%	1%	1%

#### Intensities in 270° c-plane

0°	2°	4°	6°	8°	10°	12°	14°	16°	18°	20°	22°	24°	26°	28°	30°	32°	34°	36°	38°
9139	9026	8755	8341	7796	7085	6275	5415	4537	3677	2877	2174	1603	1141	770	481	289	171	104	67
100%	99%	96%	91%	85%	78%	69%	59%	50%	40%	31%	24%	18%	12%	8%	5%	3%	2%	1%	1%

Beam angle 50%	Field angle 10%	Cutoff angle 2,5%	Intensity ratio in 120° cone	Intensity ratio in 90° cone
31.8°	54.4°	65.8°	99.8%	99.3%