

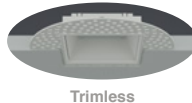
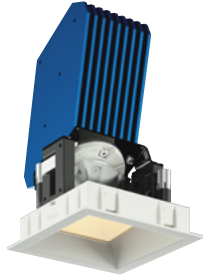
## NU3

### 3" Square Wall Wash XICATO

XICATO



eldoLED  
your product | our drive



#### DESCRIPTION

The NU3QW 3" recessed wall wash by ALPHABET offers multiple cutting edge LED technologies, premium performance, thoughtful construction and pleasing aesthetics. Offered standard with premium dimming using EldoLED 1% flicker free drivers 120V-277V universal voltage. An asymmetric reflector with a highly-efficient BrightView angle-bending lens produces excellent wall washing with no scalloping.

For the trim version, a minimalistic look is achieved with an ultrathin 1/16" trim that is only 5/16" wide. Color choices of both trim and bezel are offered for a customized look. For the trimless version, a perforated, mud up, regressed trim assembly provides for clean, trim free installation. Perforated mud frame's integrated lip helps guide the joint compound creating a sharp and clean opening.

#### HOUSING

Electrocoated 16-gauge cold-rolled steel provides enhanced structural reinforcement and rust prevention. Superior, UL-certified, injection-molded commercial-grade Lexan™ (PC) is used for the frame and regressed bezel trim. Lexan provides unmatched durability and impact resistance, and is tested for UV resistance and water exposure in outdoor applications. The thermally-advanced, anodized heat sink uses 6063 aluminum alloy. Wet location rated is offered standard. A 90-minute constant-power IOTA emergency battery backup is available.

#### MOUNTING

An advanced mounting system allows for quick and secure installation with LED and driver serviceability from below the ceiling. The LED assembly uses die-cast aluminum mounting clamp grips (MCG) that swing out to tighten onto variable ceiling thicknesses. Integrated rubber feet on each MCG provide a non-slip vibration-resistant installation. The hidden MCG system is accessible from below ceiling by removing the snap-in lens/bezel assembly with either the included suction cup or a screwdriver blade. Integrated bar hangers feature integral toothed nails, T-bar mounting slots with locking holes, tabs for joist positioning. Retrofit mounting option allows for installation from below ceiling by use of compact driver box. No risk damaging LED or bezel assembly during installation, these are installed during last steps. Fixture and driver are easily removed for servicing after install without damaging drywall.

MOUNTING DIMENSIONS	CEILING THICKNESS	CEILING CUTOUT
Trim	1/8" to 1-1/4"	3-1/4" square
Trimless	3/8" to 1-3/4"	3-1/2" square
Millwork (Trimless)	5/8" to 1-3/4"	3-9/32" square

New Construction Bar Hangers (included)	Mounting Length: 14-3/4" to 26"
Extension Kit p/n: K20266 (ordered separately, 1 per fixture)	Extends a pair of Bar Hangers Total Mounting Length: 29" to 48"

#### LISTINGS

- ETLus Listed to UL1598, cETL Listed to CSA C22.2 #250.0
- IP65 with lens - Suitable for wet locations with lens - Suitable for damp locations without lens
- Non-conductive, Lexan dead-front construction
- **Declare.** - LBC Red List Approved

RATINGS / CERTIFICATIONS	NC	RET	IC	ICAT	CP
Type non-IC	✓	✓			
Type IC			✓	✓	✓
Chicago Plenum (CECA)					✓
Suitable for air handling plenums				✓	✓
Reduced airflow (with lens) ASTM E283	✓	✓	✓	✓	✓

#### LED INFO

- SDCM = 1X2 MacAdam Ellipse, Duv +/- 0.001, Lumen Maintenance: L<sub>90</sub> > 55,000 hrs

PROJECT INFORMATION		
JOB NAME		TYPE
ORDERING CODE		

#### XICATO XTM MODULE - ORDERING CODE

SERIES	NU3	
TYPE	QW	square wall wash
QWT	square wall wash trimless	
QWTMW	square wall wash trimless millwork	
LED	XTM19	XICATO XTM 19mm
DELIVERED LUMENS	07LM	510 lm
	10LM	690 lm
	13LM	920 lm
	20LM	1370 lm
	30LM	2150 lm
	40LM <sup>2</sup>	2740 lm
CCT	27K	2700K
	30K	3000K
	35K	3500K
	40K	4000K
CRI	83	83 CRI
	90	90 CRI
	98	98 CRI
REFLECTOR	WW	wall wash with diffused angle bending lens
VOLTAGE	120 UNV	120V 120V-277V
DIMMING	DIM10 <sup>4</sup>	eldoLED flicker free 0-10V dimming to 1% eldoLED flicker free 0-10V dimming to 0% eldoLED flicker free DALI dimming to 1% eldoLED flicker free DALI dimming to 0% DMX dim to zero Lutron Hi-lume Ecosystem dimming to 1%, Soft-on & Fade-to-Black Lutron Hi-lume Premier Ecosystem dimming to 0.1%, Soft-on & Fade-to-Black leading & trailing edge dimming (Triac/ELV)
	DIM10Z <sup>4</sup>	
	DALI <sup>4</sup>	
	DALIZ <sup>4</sup>	
	DMXZ	
	LUT <sup>6</sup>	
MOUNTING OPTIONS	NC	new construction with ceiling fitting plate insulation contact housing insulation contact/airtight housing chicago plenum housing retrofit, no ceiling fitting plate
	IC <sup>1</sup>	
	ICAT <sup>1</sup>	
	CP <sup>1</sup>	
	RET	
TRIM COLOR	BK	black white matte chrome bronze wheat Not applicable to trimless option. Do not include in trimless ordering code.
	WH	
	MC	
	BZ	
	WT	
BEZEL COLOR	BK	black white matte chrome bronze wheat
	WH	
	MC	
	BZ	
	WT	
ELECTRICAL OPTIONS	EM7	emergency battery backup, 90 minutes at 7W to LED emergency battery backup, 90 minutes at 12W to LED
	EM12 <sup>3</sup>	

#### ORDERING CODE

Follow the steps to specify your fixture, example:

**NU3 - QW - XTM19 - 13LM - 35K - 98 - WW - 120 - DIM10 - NC - WH - WH - EM7**

XTM19 (LED)	POWER		
	W (83 CRI)	W (90 CRI)	W (98 CRI)
DELIVERED LM			
510	8	10	11
690	11	14	15
920	14	19	21
1370	20	25	27
2150	35	38	42
2740	46	N/A	N/A

Power Factor ≥ 0.9

#### NOTES

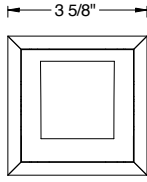
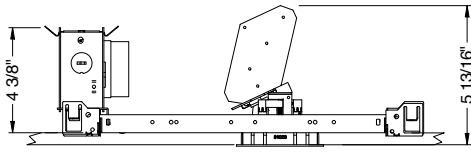
1. IC/ICAT/CP not available for 30LM and 40LM in 83CRI, 90CRI and 98CRI. Not available for 20LM in 98CRI.
2. 40LM not available in 90CRI and 98CRI.
3. EM12 not available for 83CRI and 90CRI in 07LM, 10LM and 98CRI in 07LM.
4. Driver uses logarithmic dimming curve as standard. For linear dimming curve add "LIN" after dimming code, i.e. DIM10LIN.
5. Triac/ELV dimming not available in 07LM. Dimmable to < 10% in 10LM, 13LM, 120V only. Dimmable to < 1% in 20LM, 30LM and 40LM.
6. LUT/LUTP not available in 20LM, 30LM and 40LM.

# alphabet

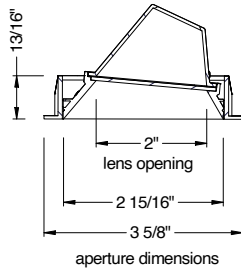
PROJECT INFORMATION		
JOB NAME		TYPE
ORDERING CODE		

## MOUNTING OPTIONS

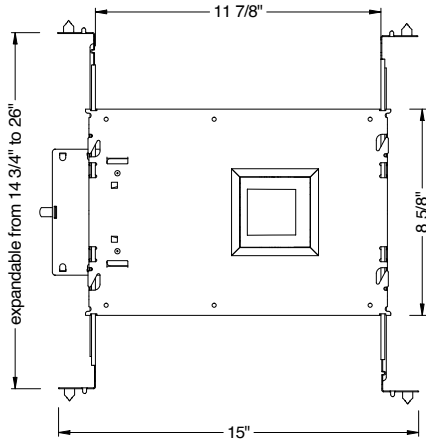
### NC - NEW CONSTRUCTION TRIM



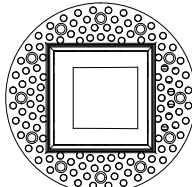
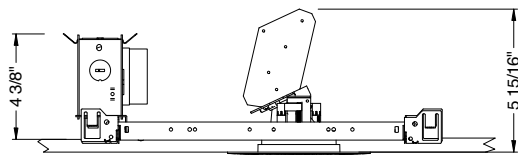
ceiling cutout  
3-1/4" diameter



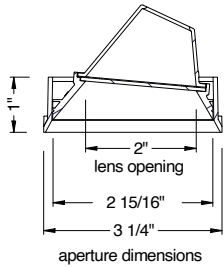
aperture dimensions



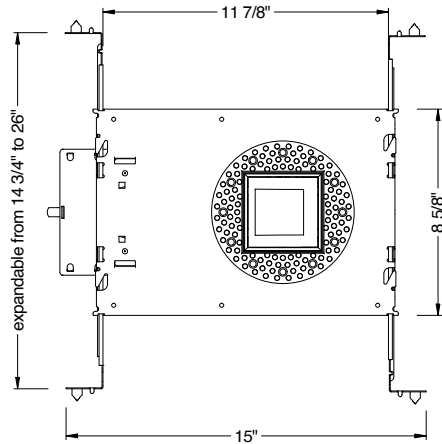
### NC - NEW CONSTRUCTION TRIMLESS



ceiling cutout  
3 1/2" diameter



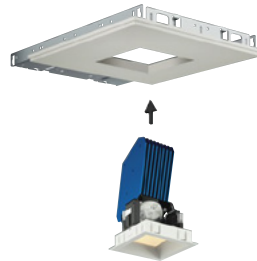
aperture dimensions



1. Fasten mud frame to ceiling.



2. Insert protective cover (included).  
Apply joint compound over the mud frame.



3. Install LED assembly.

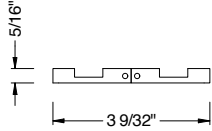
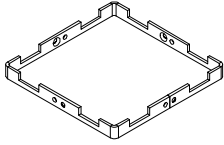


4. Install bezel.

PROJECT INFORMATION		
JOB NAME		TYPE
ORDERING CODE		

## MOUNTING OPTIONS (CONTINUED)

### QWTMW – MILLWORK TRIMLESS



Millwork Mounting Bracket

#### NOTES

- 1 Ceiling cutout 3-9/32" x 3-9/32".
- 2 Millwork Mounting Bracket & Mounting Screws are included with each Luminaire.
- 3 One Plastic Spacer and two C-Clamps are included with each order.
- 4 Refer to Installation Instructions for further details.



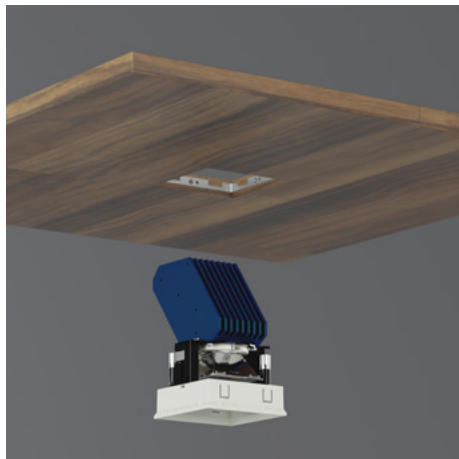
1. Insert Millwork Mounting Bracket using the included Plastic Spacer for proper depth positioning.



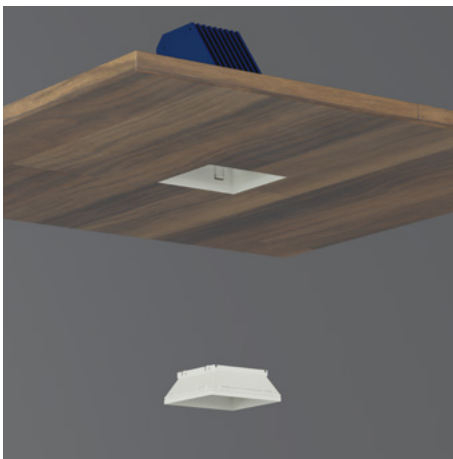
2. Use the included C-Clamps to temporarily hold the Plastic Spacer in position. Fasten the included wood screws into the Mounting Bracket using a right-angle impact driver (supplied by others).



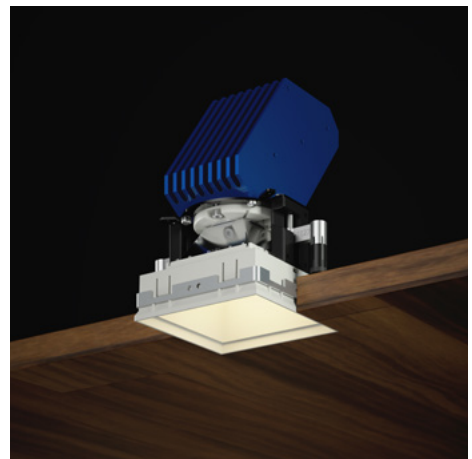
3. Remove Plastic Spacer.



4. Install Luminaire.



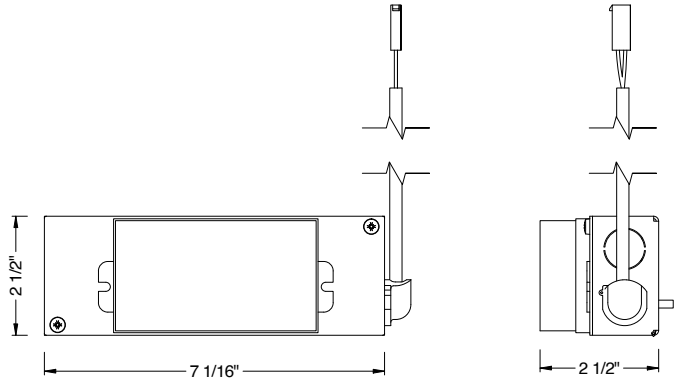
5. Insert Bezel to finish the installation.



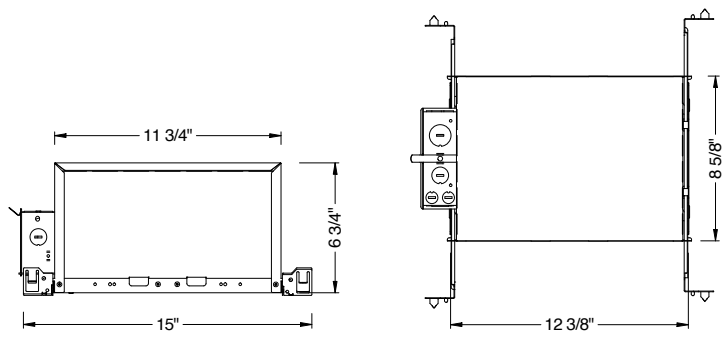
PROJECT INFORMATION			
JOB NAME		TYPE	
ORDERING CODE			

## MOUNTING OPTIONS (CONTINUED)

### RET - RETROFIT TRIM/TRIMLESS



### IC - INSULATION CONTACT HOUSING TRIM/TRIMLESS



### CP - CHICAGO PLENUM ICAT - INSULATION CONTACT / AIR TIGHT TRIM/TRIMLESS

