

Light efficiency:

78 Lumen/Watt

Light quality:

CRI: 82.4

Color temperature:

2932 K

Output: 1518 lm

Peak: 1321 cd

Power: 19.4 W

PF: 0.99



Beam angle

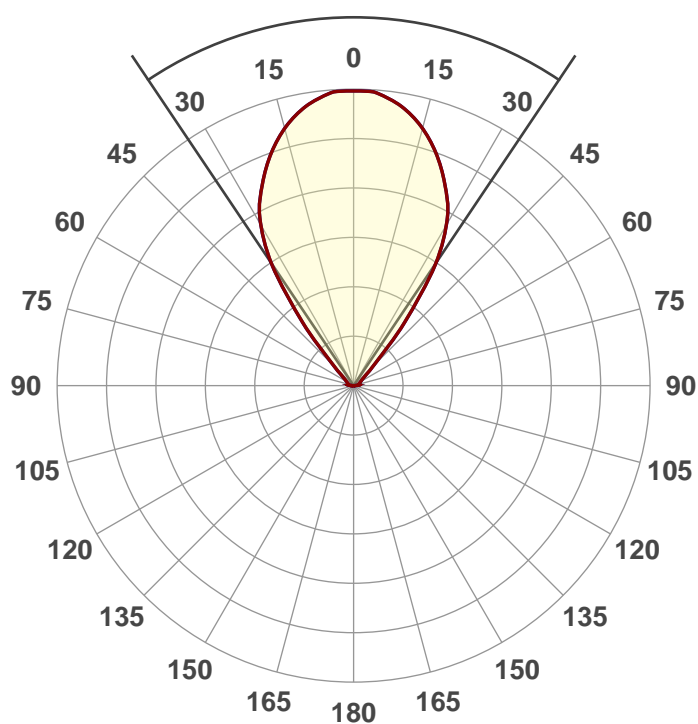
67.8°

Product name:

NU3-QD-XTM19-20LM-30K-83-D65-NL-120-Dim10-RET-WH-WH

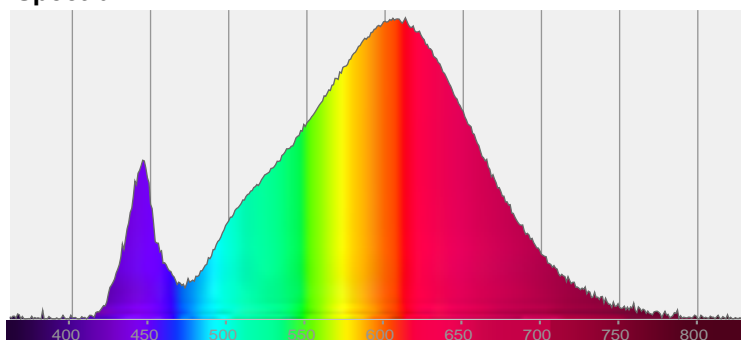
Date and time:

11/29/2017 12:58:38 PM

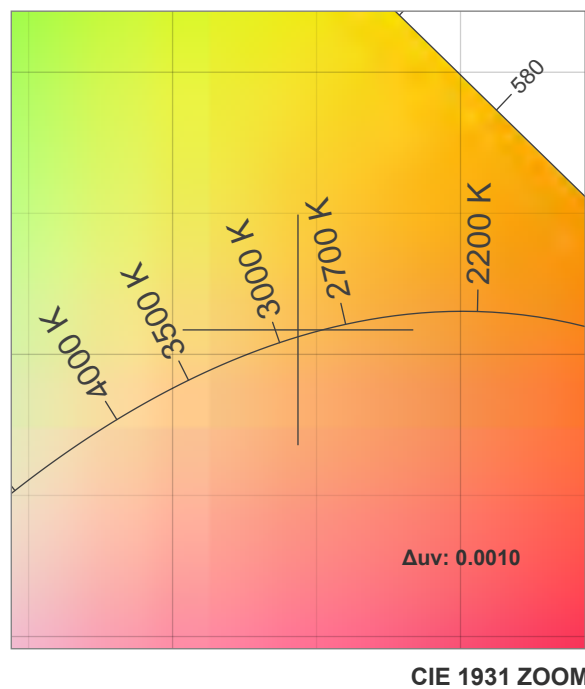
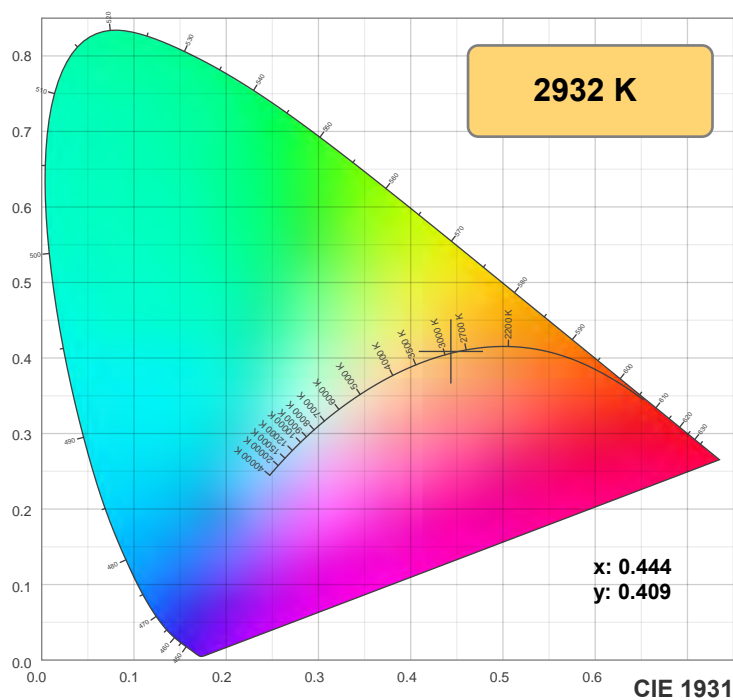


CIE 1931
x: 0.444
y: 0.409

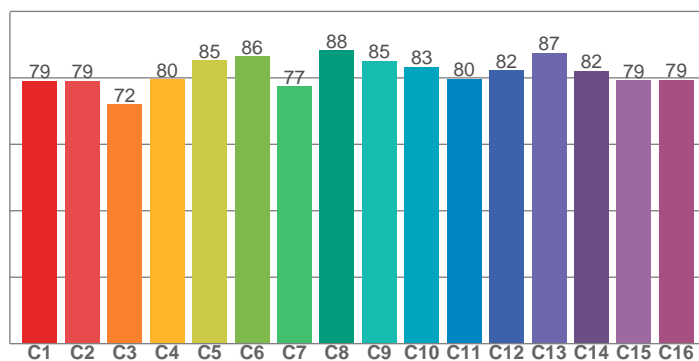
Spectra



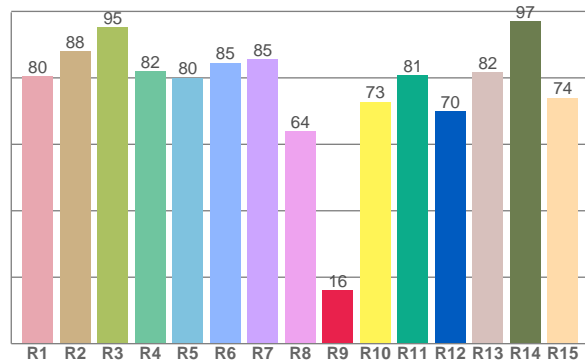
Color details



TM30: 81.4



CRI: 82.4 (R1-R8)



CRI R values, only R1-R8 are used to calculate final CRI value

R1	R2	R3	R4	R5	R6	R7	R8	R9	R10	R11	R12	R13	R14	R15
80.4	88.0	95.1	82.0	80.0	84.6	85.5	63.9	16.1	72.8	80.8	70.0	81.6	97.0	74.0

TM30 C values, 16 binned values out of total of 99 C values

C1	C2	C3	C4	C5	C6	C7	C8	C9	C10	C11	C12	C13	C14	C15	C16
79.1	79.1	72.1	79.6	85.2	86.4	77.4	88.3	85.1	83.2	79.7	82.2	87.5	82.1	79.2	79.4

Color parameters

Color temperature	Color rendering index	Red component	Color fidelity	Color gamut	Color coordinate cie 1931	Color coordinate cie 1931	Color coordinate	Color coordinate	Color deviation from black body
CCT	CRI	CRI R9	TM30 Rf	TM30 Rg	x	y	u	v	Δuv
2932 K	82.4	16.1	81.4	98.8	0.444	0.409	0.253	0.349	0.0010

TM30 details

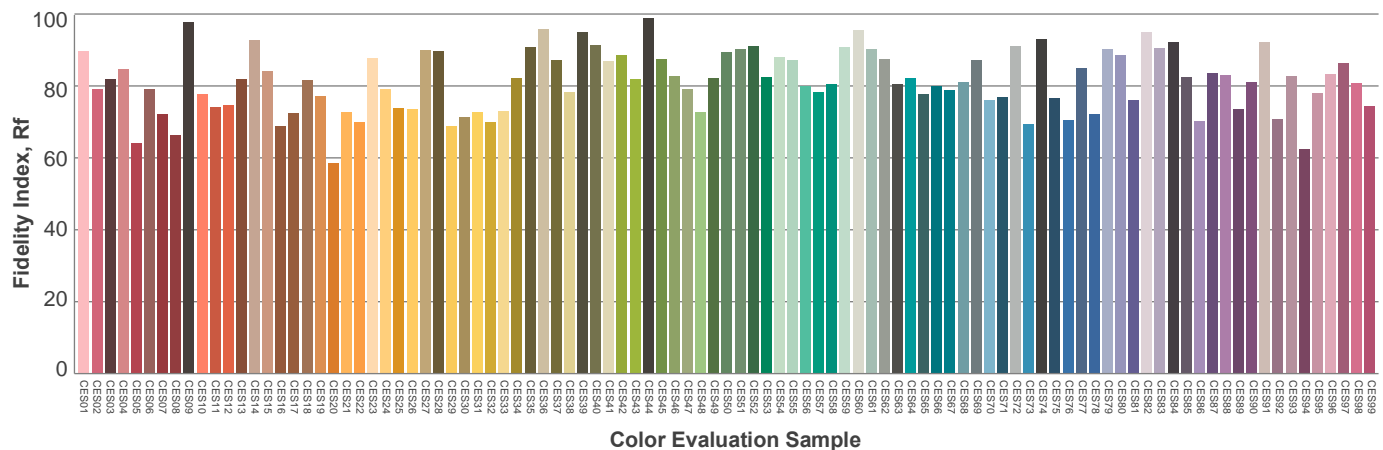
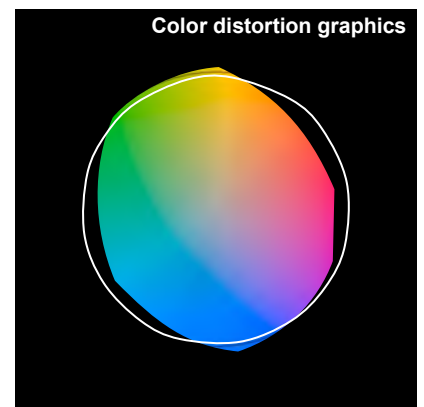
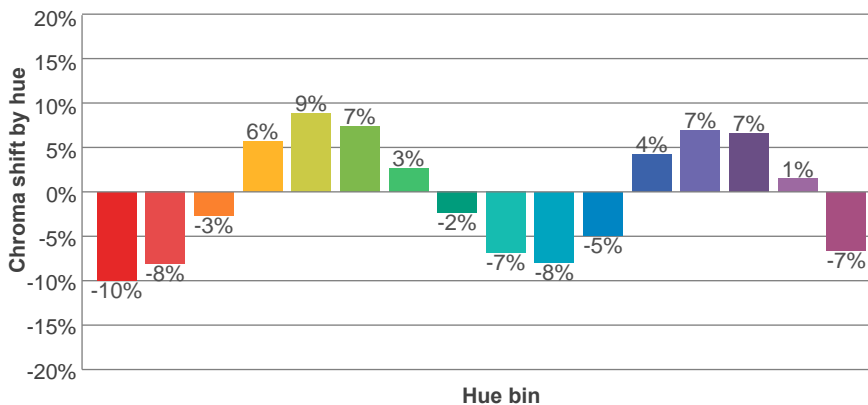
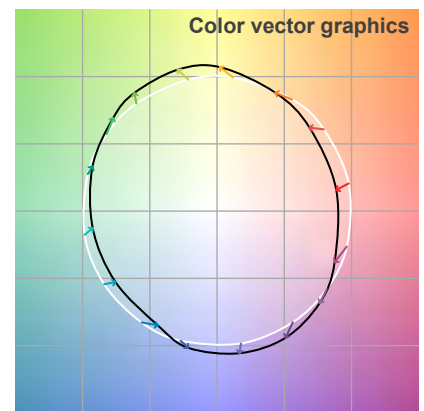
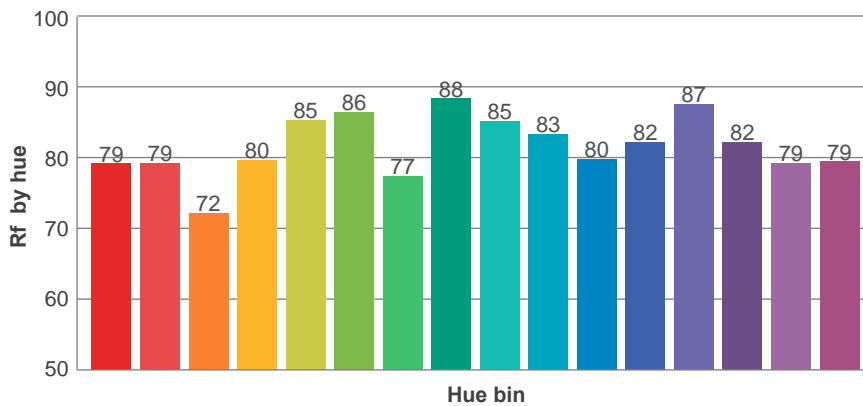
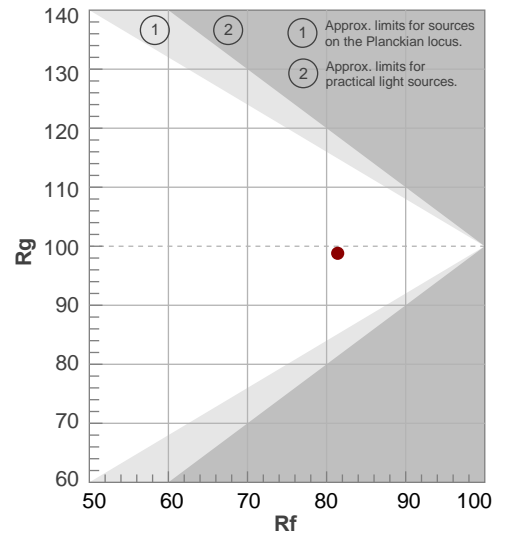
Rf 81.4

Fidelity index Rf

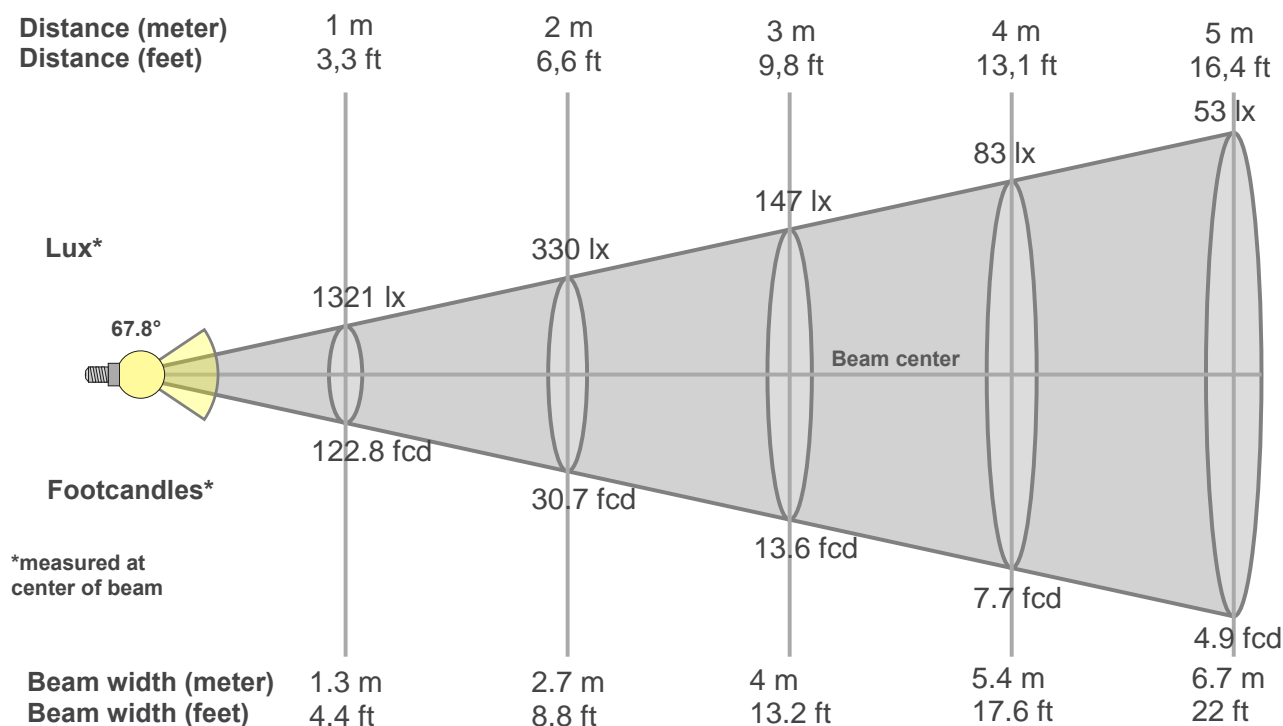
Rg 98.8

Gamut index Rg

Hue Bin	R _f	Graphic shifts (%)	
		Chroma	Hue
1	79	-10%	-3%
2	79	-8%	7%
3	72	-3%	13%
4	80	6%	11%
5	85	9%	6%
6	86	7%	-3%
7	77	3%	-13%
8	88	-2%	-6%
9	85	-7%	-4%
10	83	-8%	3%
11	80	-5%	11%
12	82	4%	7%
13	87	7%	-3%
14	82	7%	-11%
15	79	1%	-11%
16	79	-7%	-13%



Beam details



Beam intensities from 1-20m

1m	2m	3m	4m	5m	6m	7m	8m	9m	10m	11m	12m	13m	14m	15m	16m	17m	18m	19m	20m
3.3ft	6.6ft	9.8ft	13.1ft	16.4ft	19.7ft	23ft	26.2ft	29.5ft	32.8ft	36.1ft	39.4ft	42.7ft	45.9ft	49.2ft	52.5ft	55.8ft	59.1ft	62.3ft	65.6ft
1321lx	330lx	147lx	83lx	53lx	37lx	27lx	21lx	16lx	13lx	11lx	9lx	8lx	7lx	6lx	5lx	5lx	4lx	4lx	3lx
122.8fcd	30.7fcd	13.6fcd	7.7fcd	4.9fcd	3.4fcd	2.5fcd	1.9fcd	1.5fcd	1.2fcd	1fcd	0.9fcd	0.7fcd	0.6fcd	0.5fcd	0.5fcd	0.4fcd	0.4fcd	0.3fcd	0.3fcd

Intensities in 0° c-plane

0°	2°	4°	6°	8°	10°	12°	14°	16°	18°	20°	22°	24°	26°	28°	30°	32°	34°	36°	38°
1321	1321	1316	1304	1286	1266	1238	1209	1174	1135	1094	1047	1000	948	894	827	742	656	537	418
100%	100%	100%	99%	97%	96%	94%	92%	89%	86%	83%	79%	76%	72%	68%	63%	56%	50%	41%	32%

Intensities in 90° c-plane

0°	2°	4°	6°	8°	10°	12°	14°	16°	18°	20°	22°	24°	26°	28°	30°	32°	34°	36°	38°
1321	1321	1316	1304	1286	1266	1238	1209	1174	1135	1094	1047	1000	948	894	827	742	656	537	418
100%	100%	100%	99%	97%	96%	94%	92%	89%	86%	83%	79%	76%	72%	68%	63%	56%	50%	41%	32%

Intensities in 180° c-plane

0°	2°	4°	6°	8°	10°	12°	14°	16°	18°	20°	22°	24°	26°	28°	30°	32°	34°	36°	38°
1321	1321	1316	1304	1286	1266	1238	1209	1174	1135	1094	1047	1000	948	894	827	742	656	537	418
100%	100%	100%	99%	97%	96%	94%	92%	89%	86%	83%	79%	76%	72%	68%	63%	56%	50%	41%	32%

Intensities in 270° c-plane

0°	2°	4°	6°	8°	10°	12°	14°	16°	18°	20°	22°	24°	26°	28°	30°	32°	34°	36°	38°
1321	1321	1316	1304	1286	1266	1238	1209	1174	1135	1094	1047	1000	948	894	827	742	656	537	418
100%	100%	100%	99%	97%	96%	94%	92%	89%	86%	83%	79%	76%	72%	68%	63%	56%	50%	41%	32%

Beam angle 50%	Field angle 10%	Cutoff angle 2,5%	Intensity ratio in 120° cone	Intensity ratio in 90° cone
67.8°	89.8°	125.5°	93.6%	88.2%