

Light efficiency:

40 Lumen/Watt

Light quality:

CRI: 83.6

Color temperature:

2874 K

Output: 1428 lm

Peak: 1753 cd

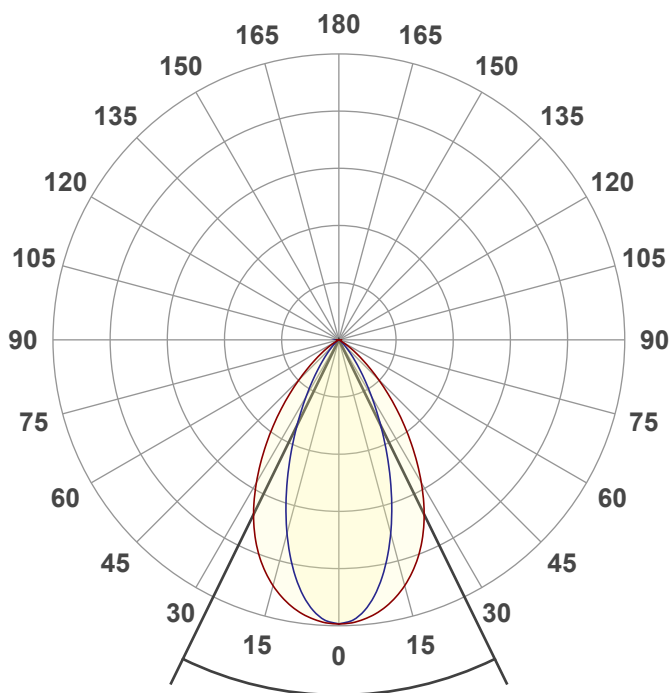
Power: 35.7 W

PF: 0.98



NU3-RA-XTM09-20LM-30K-83-35D-EA-NL-WH-WH

Date and time:
6/7/2022 11:55:18 AM



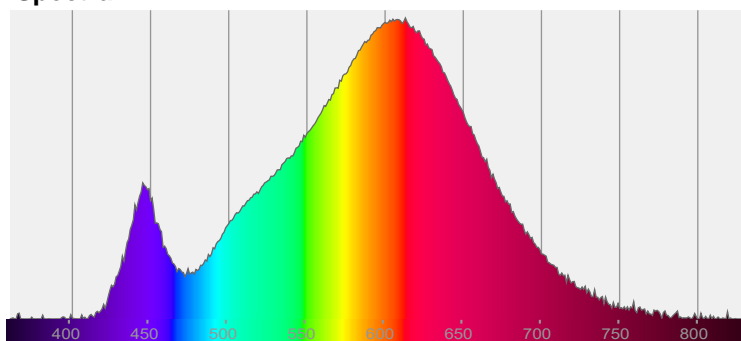
Beam angle

52.1°

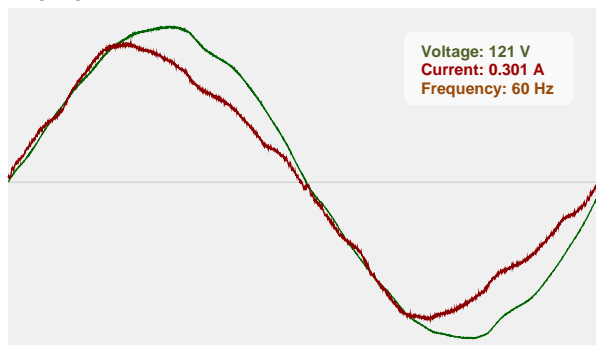


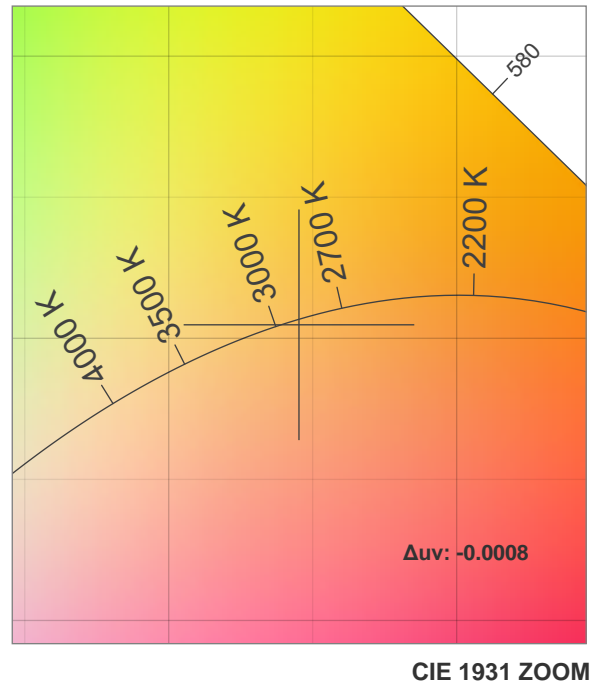
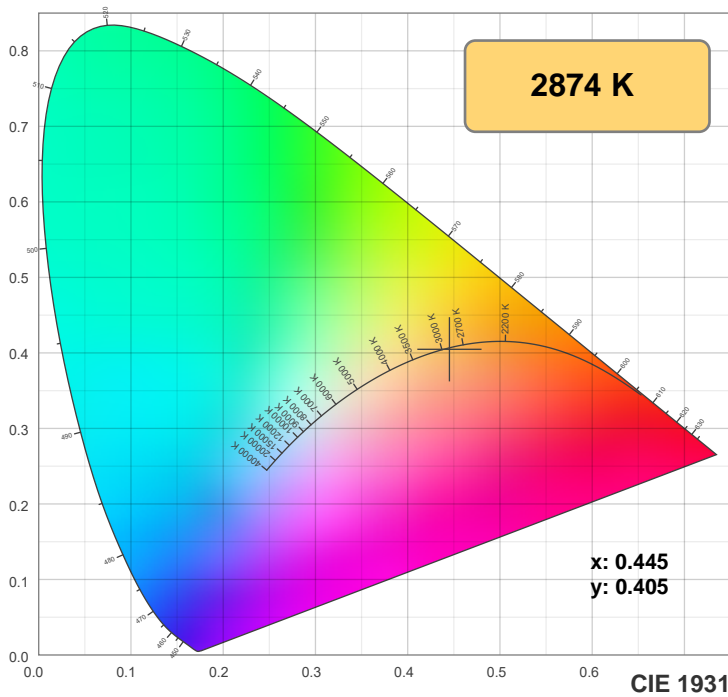
CIE 1931
x: 0.445
y: 0.405

Spectra

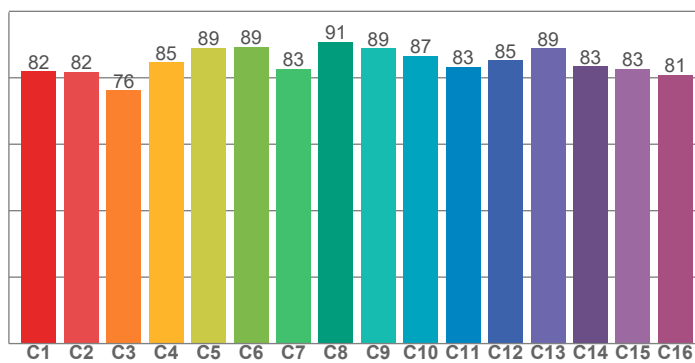


Power

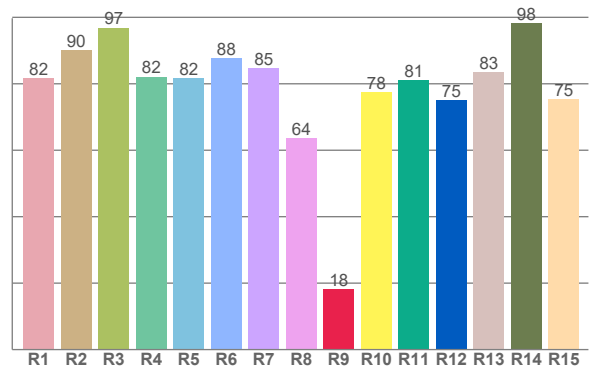




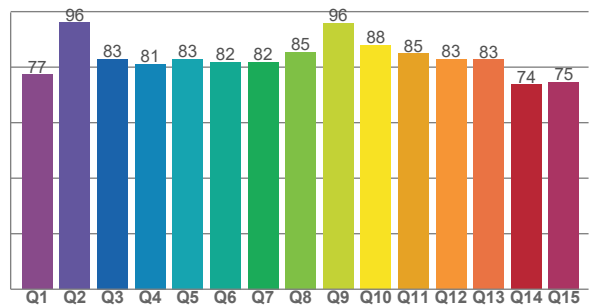
TM30: 84.6



CRI: 83.6 (R1-R8)



CQS: 82.3



CRI R values, only R1-R8 are used to calculate final CRI value

R1	R2	R3	R4	R5	R6	R7	R8	R9	R10	R11	R12	R13	R14	R15
81.7	90.1	96.8	82.1	81.6	87.7	84.7	63.7	18.2	77.6	81.1	75.1	83.4	98.2	75.4

TM30 C values, 16 binned values out of total of 99 C values

C1	C2	C3	C4	C5	C6	C7	C8	C9	C10	C11	C12	C13	C14	C15	C16
82.0	81.8	76.2	84.6	89.0	89.2	82.7	90.8	88.8	86.6	83.2	85.3	88.8	83.4	82.7	81.0

CQS Q values

Q1	Q2	Q3	Q4	Q5	Q6	Q7	Q8	Q9	Q10	Q11	Q12	Q13	Q14	Q15
77.3	96.1	82.9	81.1	82.9	81.8	81.9	85.4	95.8	87.9	84.9	82.9	82.7	73.7	74.7

Color parameters

Color temperature	Color rendering index	Red component	Color fidelity	Color gamut	Color quality scale	Color coordinate cie 1931	Color coordinate cie 1931	Color coordinate	Color coordinate	Color deviation from black body
CCT	CRI	CRI R9	TM30 Rf	TM30 Rg	CQS	x	y	u	v	Δuv
2874 K	83.6	18.2	84.6	98.6	82.3	0.445	0.405	0.256	0.349	-0.0008

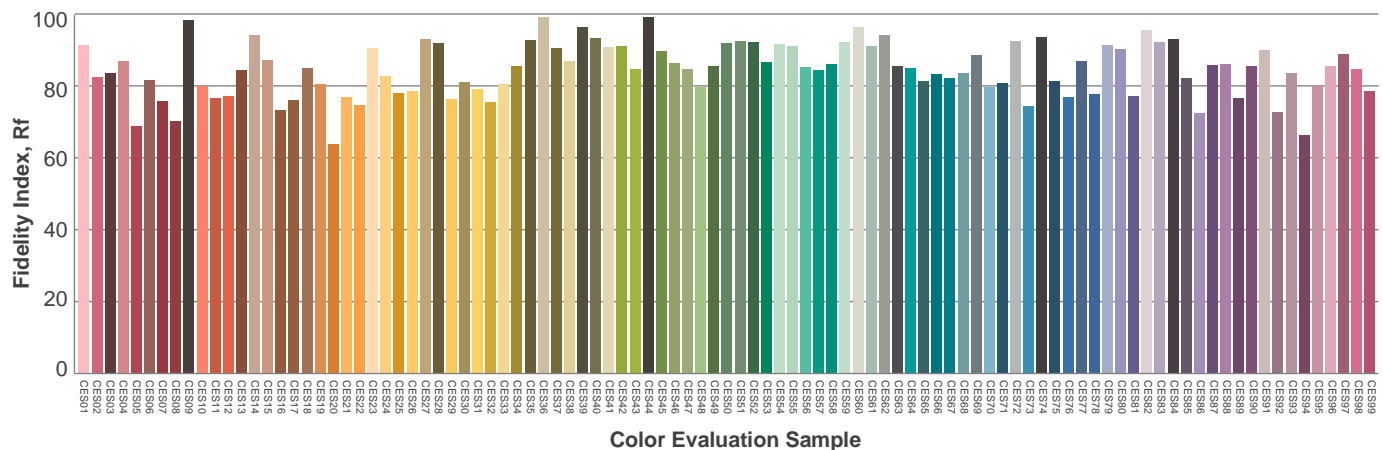
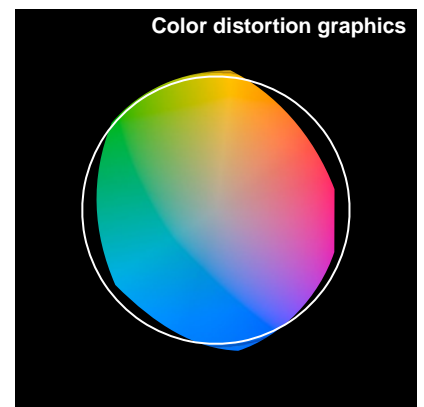
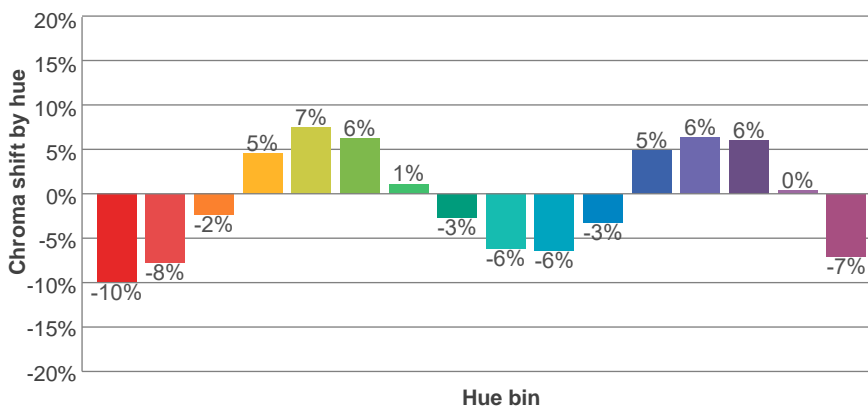
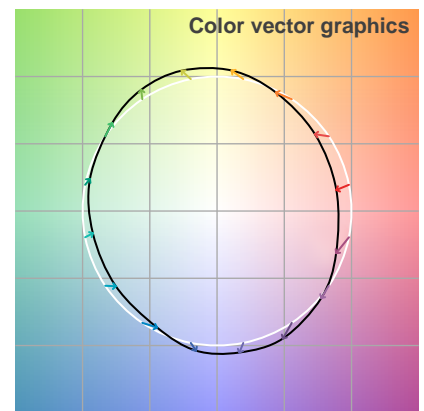
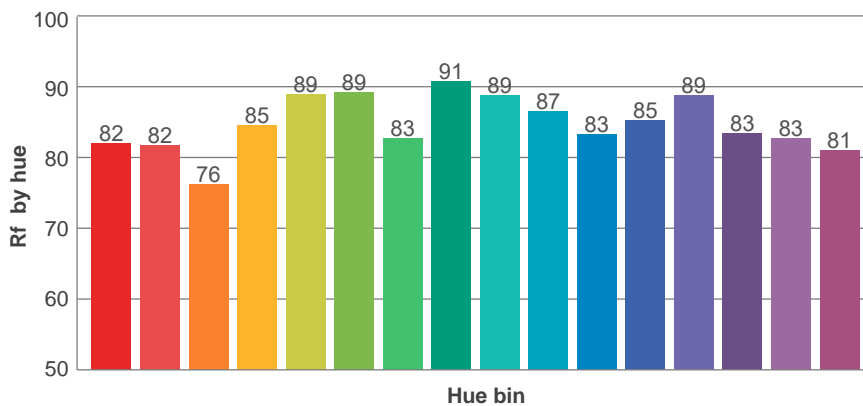
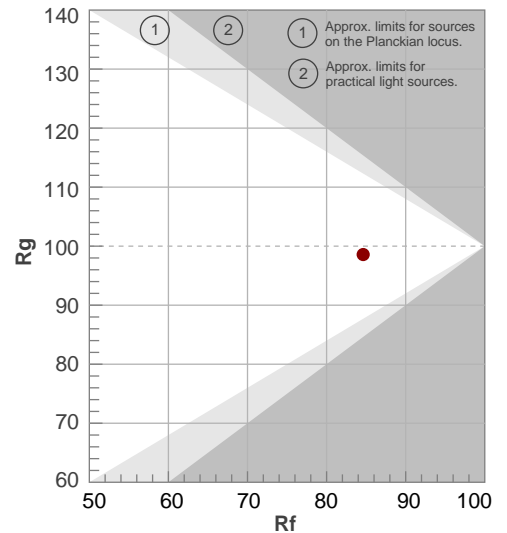
Rf 84.6

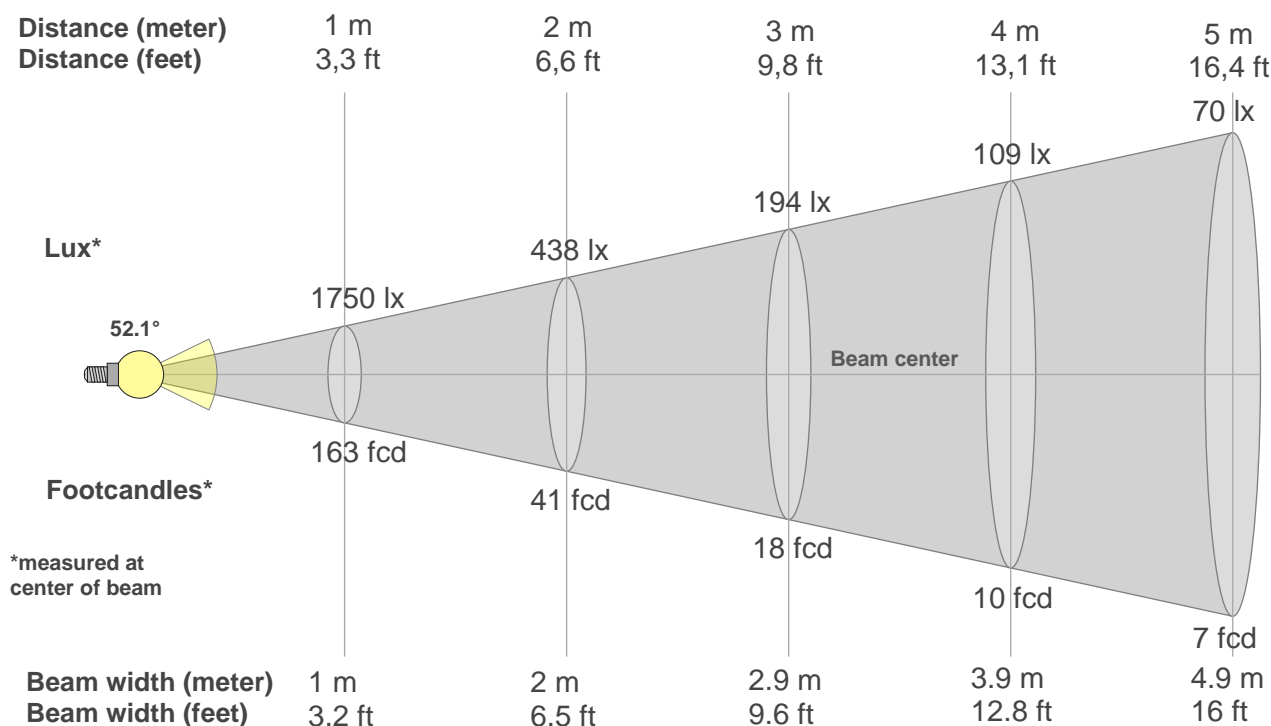
Fidelity index Rf

Rg 98.6

Gammut index Rg

Hue Bin	R _f	Graphic shifts (%)	
		Chroma	Hue
1	82	-10%	-2%
2	82	-8%	7%
3	76	-2%	13%
4	85	5%	10%
5	89	7%	5%
6	89	6%	-3%
7	83	1%	-11%
8	91	-3%	-5%
9	89	-6%	-2%
10	87	-6%	5%
11	83	-3%	11%
12	85	5%	5%
13	89	6%	-4%
14	83	6%	-12%
15	83	0%	-11%
16	81	-7%	-13%





Beam intensities from 1-20m

1m	2m	3m	4m	5m	6m	7m	8m	9m	10m	11m	12m	13m	14m	15m	16m	17m	18m	19m	20m
3.3ft	6.6ft	9.8ft	13.1ft	16.4ft	19.7ft	23ft	26.2ft	29.5ft	32.8ft	36.1ft	39.4ft	42.7ft	45.9ft	49.2ft	52.5ft	55.8ft	59.1ft	62.3ft	65.6ft
1750lx	438lx	194lx	109lx	70lx	49lx	36lx	27lx	22lx	18lx	14lx	12lx	10lx	9lx	8lx	7lx	6lx	5lx	5lx	4lx
162.6fcd	40.7fcd	18.1fcd	10.2fcd	6.5fcd	4.5fcd	3.3fcd	2.5fcd	2fcd	1.6fcd	1.3fcd	1.1fcd	1fcd	0.8fcd	0.7fcd	0.6fcd	0.6fcd	0.5fcd	0.5fcd	0.4fcd

Intensities in 0° c-plane

0°	2°	4°	6°	8°	10°	12°	14°	16°	18°	20°	22°	24°	26°	28°	30°	32°	34°	36°	38°
1750	1748	1737	1720	1698	1670	1633	1591	1542	1487	1427	1357	1281	1198	1110	1017	921	824	730	637
100%	100%	99%	98%	97%	95%	93%	91%	88%	85%	82%	78%	73%	68%	63%	58%	53%	47%	42%	36%

Intensities in 90° c-plane

0°	2°	4°	6°	8°	10°	12°	14°	16°	18°	20°	22°	24°	26°	28°	30°	32°	34°	36°	38°
1750	1736	1706	1657	1589	1502	1401	1292	1175	1054	932	813	699	591	492	403	328	261	205	157
100%	99%	97%	95%	91%	86%	80%	74%	67%	60%	53%	46%	40%	34%	28%	23%	19%	15%	12%	9%

Intensities in 180° c-plane

0°	2°	4°	6°	8°	10°	12°	14°	16°	18°	20°	22°	24°	26°	28°	30°	32°	34°	36°	38°
1750	1748	1737	1720	1698	1670	1633	1591	1542	1487	1427	1357	1281	1198	1110	1017	921	824	730	637
100%	100%	99%	98%	97%	95%	93%	91%	88%	85%	82%	78%	73%	68%	63%	58%	53%	47%	42%	36%

Intensities in 270° c-plane

0°	2°	4°	6°	8°	10°	12°	14°	16°	18°	20°	22°	24°	26°	28°	30°	32°	34°	36°	38°
1750	1736	1706	1657	1589	1502	1401	1292	1175	1054	932	813	699	591	492	403	328	261	205	157
100%	99%	97%	95%	91%	86%	80%	74%	67%	60%	53%	46%	40%	34%	28%	23%	19%	15%	12%	9%

Beam angle 50%	Field angle 10%	Cutoff angle 2,5%	Intensity ratio in 120° cone	Intensity ratio in 90° cone
52.1°	87°	104.6°	99.4%	93.4%