

Light efficiency:

52 Lumen/Watt

Light quality:

CRI: 95.9

Color temperature:

3156 K

Output: 1334 lm

Peak: 4762 cd

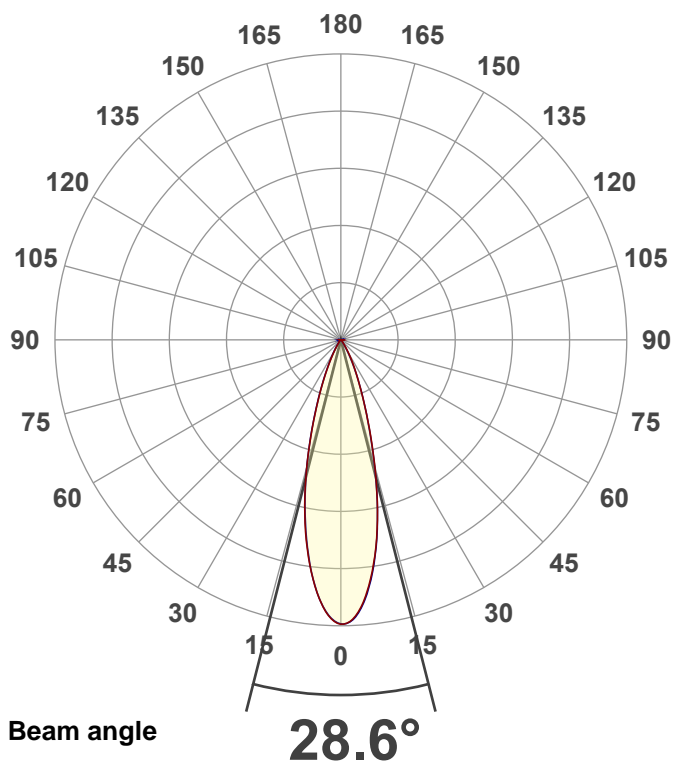
Power: 25.7 W

PF: 0.98



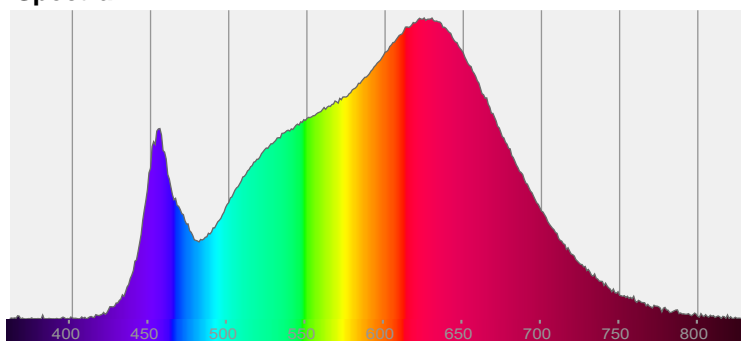
NU3-RA-WD-20LM-3018-97-30D-NA-NL-WH-WH

Date and time:  
7/1/2022 9:53:35 AM

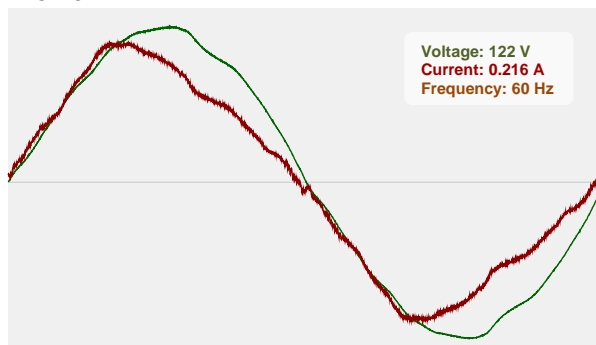


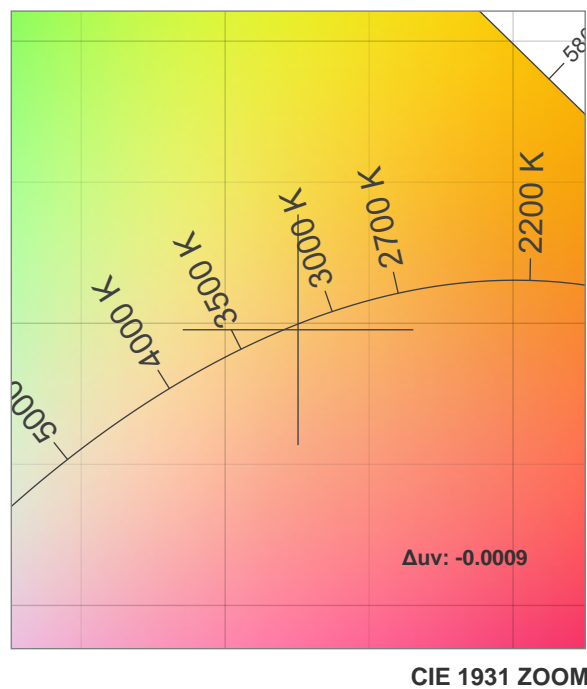
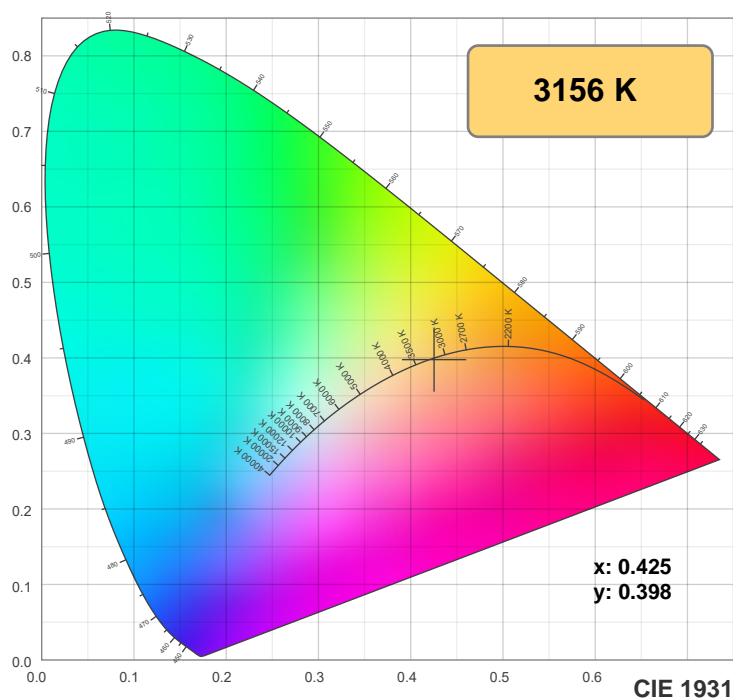
CIE 1931  
x: 0.425  
y: 0.398

Spectra

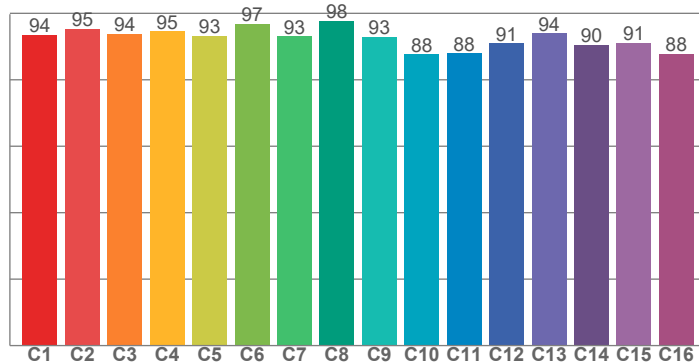


Power

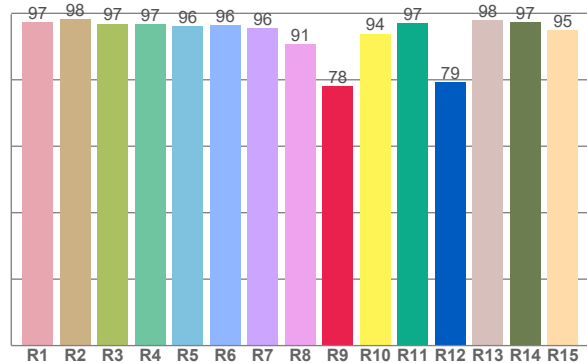




TM30: 92.6



CRI: 95.9 (R1-R8)



CRI R values, only R1-R8 are used to calculate final CRI value

R1	R2	R3	R4	R5	R6	R7	R8	R9	R10	R11	R12	R13	R14	R15
97.2	98.2	96.9	96.7	96.1	96.3	95.5	90.6	78.1	93.8	96.9	79.3	97.8	97.4	94.9

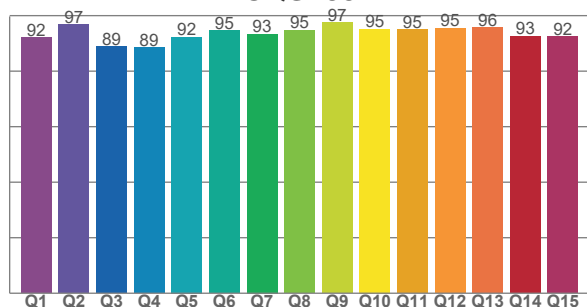
TM30 C values, 16 binned values out of total of 99 C values

C1	C2	C3	C4	C5	C6	C7	C8	C9	C10	C11	C12	C13	C14	C15	C16
93.6	95.3	93.8	94.5	93.1	96.8	93.1	97.8	92.9	87.7	88.0	90.9	94.0	90.5	91.2	87.9

CQS Q values

Q1	Q2	Q3	Q4	Q5	Q6	Q7	Q8	Q9	Q10	Q11	Q12	Q13	Q14	Q15
92.1	96.8	88.9	88.5	92.3	94.7	93.3	94.7	97.5	95.1	95.0	95.4	95.7	92.6	92.5

CQS: 93.1



## Color parameters

Color temperature	Color rendering index	Red component	Color fidelity	Color gamut	Color quality scale	Color coordinate cie 1931	Color coordinate cie 1931	Color coordinate	Color coordinate	Color deviation from black body
CCT	CRI	CRI R9	TM30 Rf	TM30 Rg	CQS	x	y	u	v	Δuv
3156 K	95.9	78.1	92.6	99.9	93.1	0.425	0.398	0.246	0.345	-0.0009

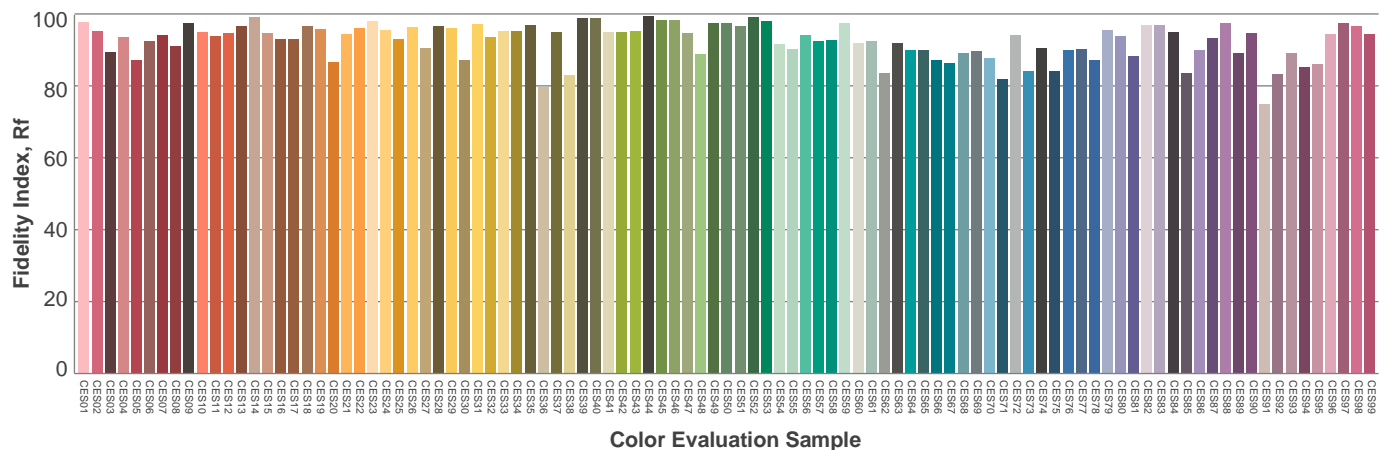
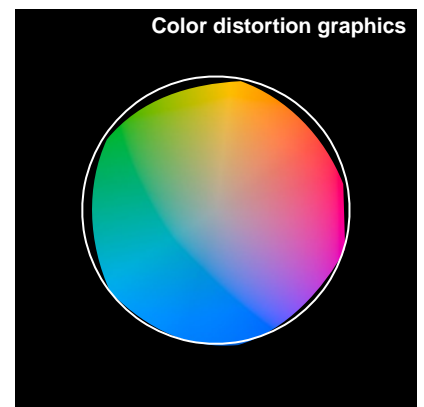
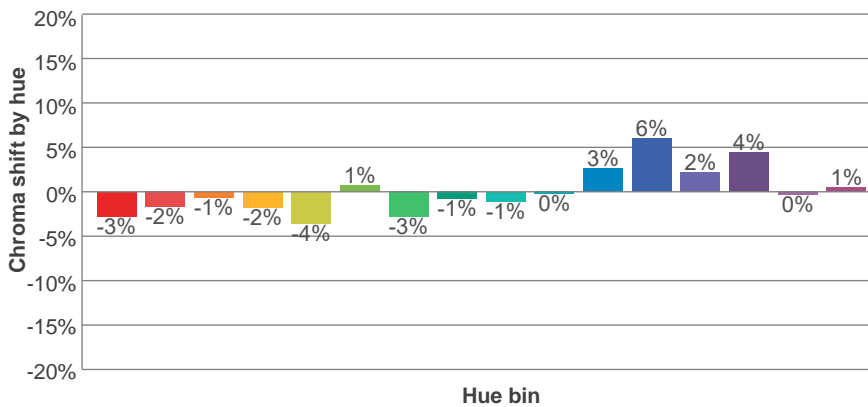
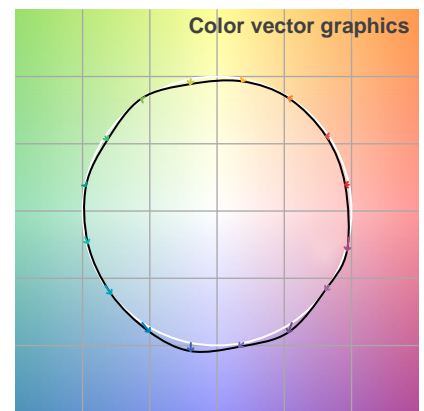
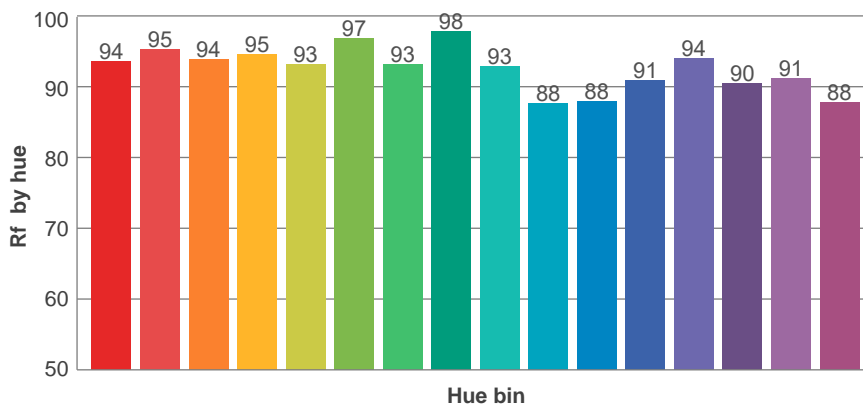
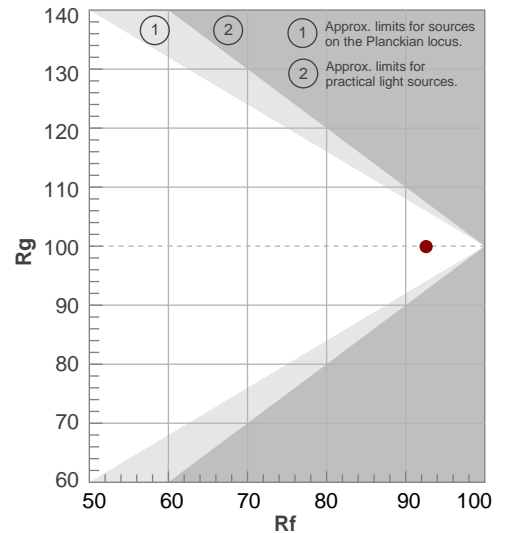
**Rf 92.6**

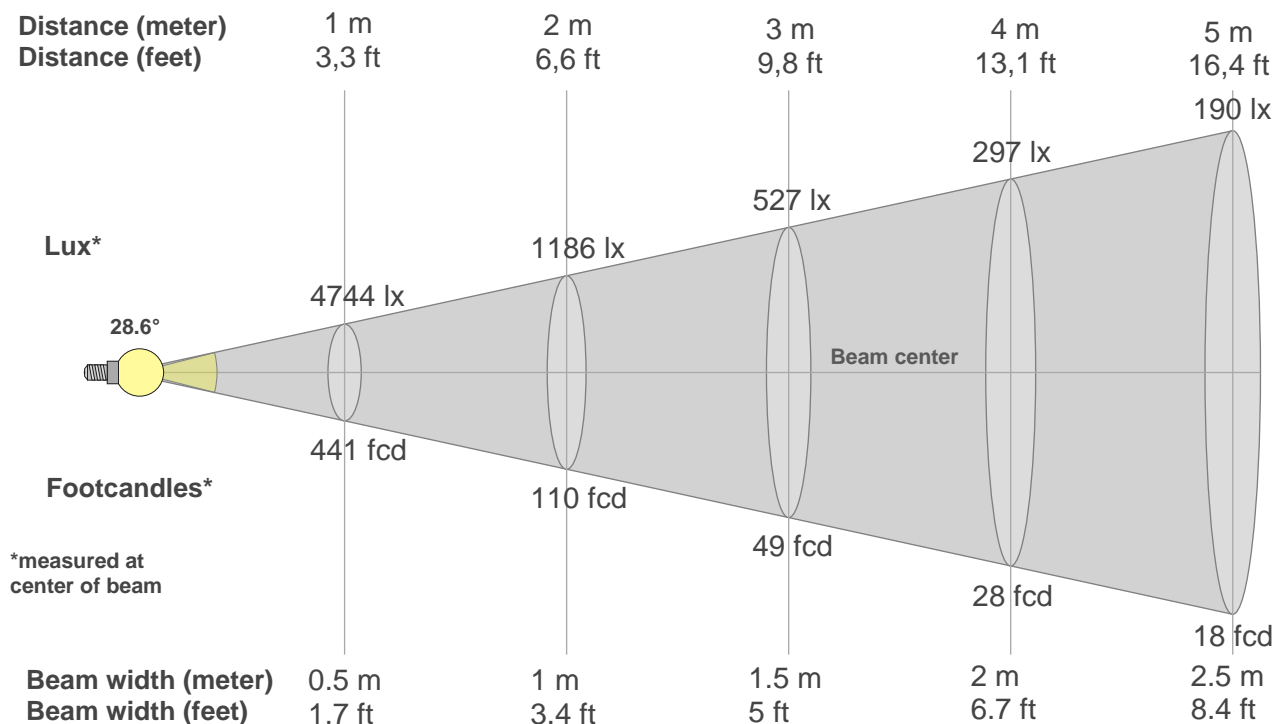
Fidelity index Rf

**Rg 99.9**

Gammut index Rg

Hue Bin	R <sub>f</sub>	Graphic shifts (%)	
		Chroma	Hue
1	94	-3%	1%
2	95	-2%	1%
3	94	-1%	3%
4	95	-2%	1%
5	93	-4%	1%
6	97	1%	0%
7	93	-3%	1%
8	98	-1%	1%
9	93	-1%	5%
10	88	0%	7%
11	88	3%	8%
12	91	6%	1%
13	94	2%	-3%
14	90	4%	-6%
15	91	0%	-4%
16	88	1%	-10%





#### Beam intensities from 1-20m

1m	2m	3m	4m	5m	6m	7m	8m	9m	10m	11m	12m	13m	14m	15m	16m	17m	18m	19m	20m
3.3ft	6.6ft	9.8ft	13.1ft	16.4ft	19.7ft	23ft	26.2ft	29.5ft	32.8ft	36.1ft	39.4ft	42.7ft	45.9ft	49.2ft	52.5ft	55.8ft	59.1ft	62.3ft	65.6ft
4744lx	1186lx	527lx	297lx	190lx	132lx	97lx	74lx	59lx	47lx	39lx	33lx	28lx	24lx	21lx	19lx	16lx	15lx	13lx	12lx
440.7fc	110.2fc	49fcd	27.5fcd	17.6fcd	12.2fcd	9fcd	6.9fcd	5.4fcd	4.4fcd	3.6fcd	3.1fcd	2.6fcd	2.2fcd	2fcd	1.7fcd	1.5fcd	1.4fcd	1.2fcd	1.1fcd

#### Intensities in 0° c-plane

0°	2°	4°	6°	8°	10°	12°	14°	16°	18°	20°	22°	24°	26°	28°	30°	32°	34°	36°	38°
4744	4704	4508	4212	3843	3422	2949	2448	1969	1536	1167	880	674	511	379	270	182	121	79	52
100%	99%	95%	89%	81%	72%	62%	52%	42%	32%	25%	19%	14%	11%	8%	6%	4%	3%	2%	1%

#### Intensities in 90° c-plane

0°	2°	4°	6°	8°	10°	12°	14°	16°	18°	20°	22°	24°	26°	28°	30°	32°	34°	36°	38°
4744	4694	4521	4240	3873	3435	2942	2435	1946	1508	1164	886	659	472	317	203	128	80	50	30
100%	99%	95%	89%	82%	72%	62%	51%	41%	32%	25%	19%	14%	10%	7%	4%	3%	2%	1%	1%

#### Intensities in 180° c-plane

0°	2°	4°	6°	8°	10°	12°	14°	16°	18°	20°	22°	24°	26°	28°	30°	32°	34°	36°	38°
4744	4647	4438	4138	3772	3356	2907	2443	1982	1545	1187	896	660	471	324	221	148	99	66	46
100%	98%	94%	87%	80%	71%	61%	51%	42%	33%	25%	19%	14%	10%	7%	5%	3%	2%	1%	1%

#### Intensities in 270° c-plane

0°	2°	4°	6°	8°	10°	12°	14°	16°	18°	20°	22°	24°	26°	28°	30°	32°	34°	36°	38°
4744	4651	4432	4127	3753	3330	2885	2429	1983	1566	1196	899	667	486	348	246	174	121	83	56
100%	98%	93%	87%	79%	70%	61%	51%	42%	33%	25%	19%	14%	10%	7%	5%	4%	3%	2%	1%

Beam angle 50%	Field angle 10%	Cutoff angle 2,5%	Intensity ratio in 120° cone	Intensity ratio in 90° cone
28.6°	52.3°	66.7°	99.7%	99.1%