

Light efficiency:

48 Lumen/Watt

Light quality:

CRI: 95.4

Color temperature:

3112 K

Output: 1167 lm

Peak: 3283 cd

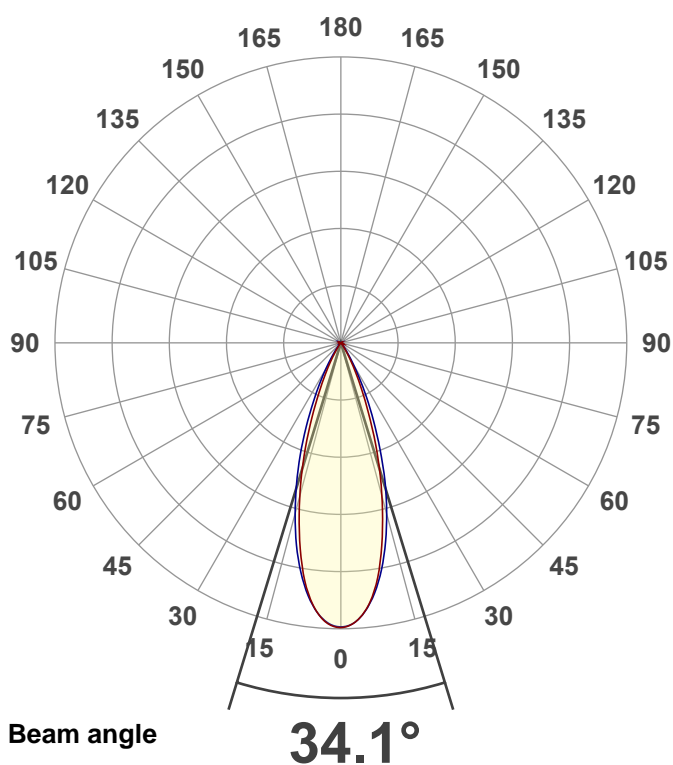
Power: 24.5 W

PF: 0.98



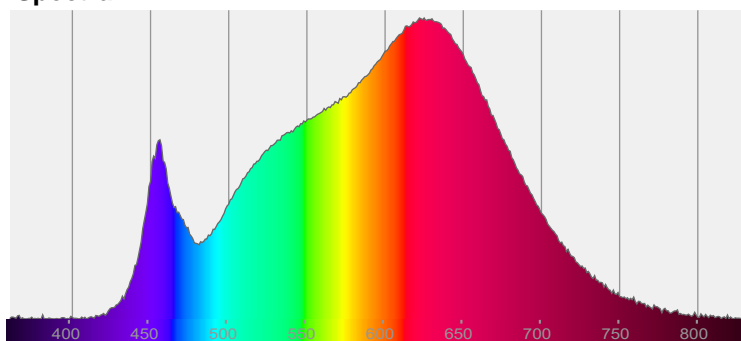
NU4-RAPH-WD-20LM-3018-97-35D-HET-WH

Date and time:
12/21/2021 3:31:52 PM

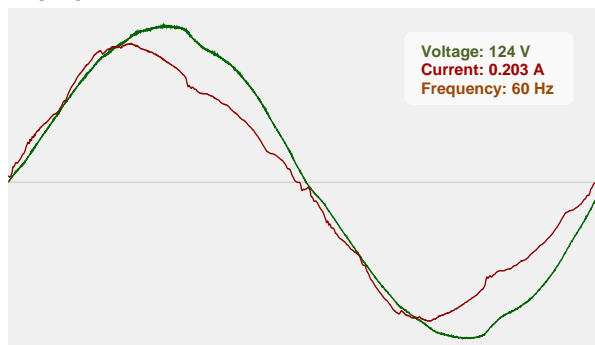


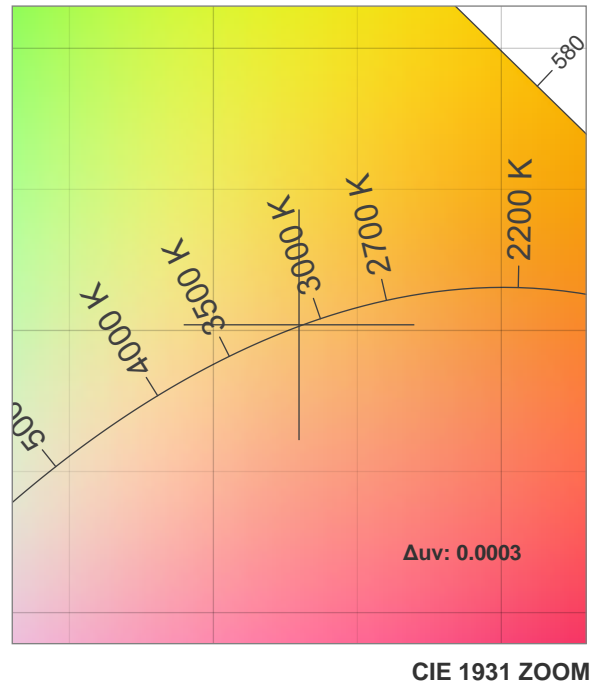
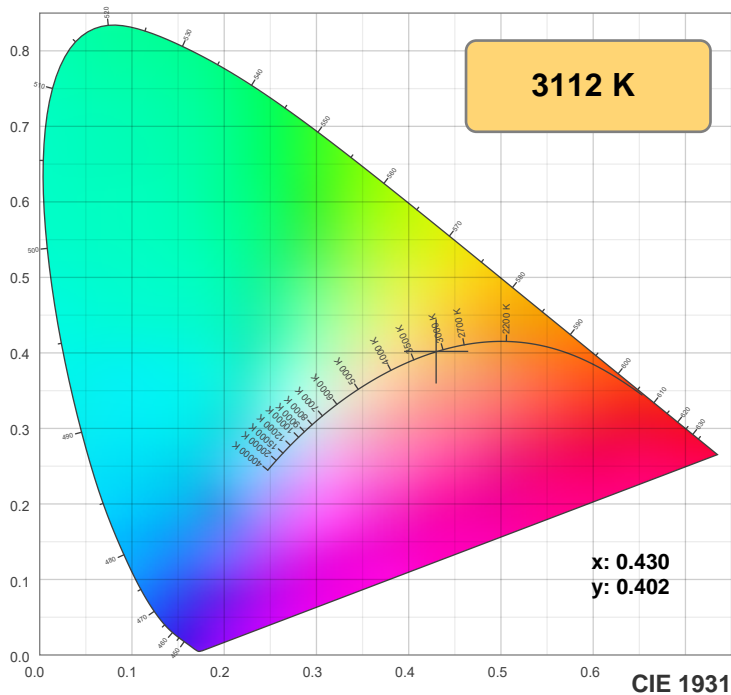
CIE 1931
x: 0.430
y: 0.402

Spectra

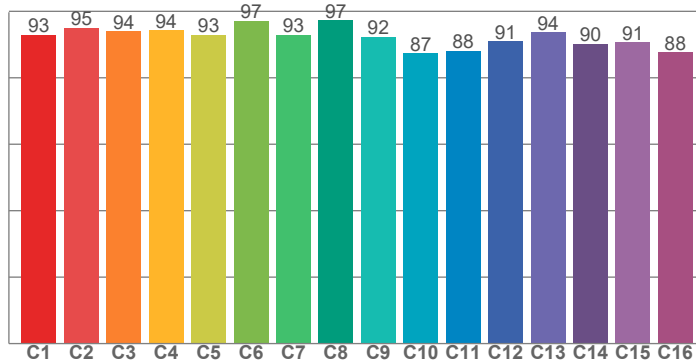


Power

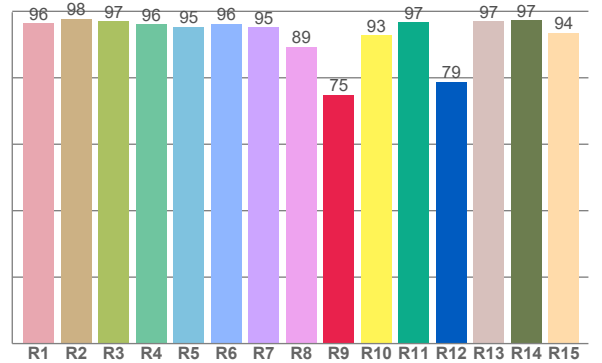




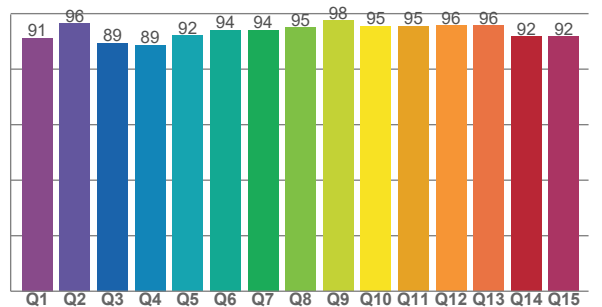
TM30: 92.3



CRI: 95.4 (R1-R8)



CQS: 93.0



CRI R values, only R1-R8 are used to calculate final CRI value

R1	R2	R3	R4	R5	R6	R7	R8	R9	R10	R11	R12	R13	R14	R15
96.4	97.7	97.0	96.1	95.3	96.2	95.3	89.3	74.9	92.8	96.8	78.8	97.0	97.4	93.6

TM30 C values, 16 binned values out of total of 99 C values

C1	C2	C3	C4	C5	C6	C7	C8	C9	C10	C11	C12	C13	C14	C15	C16
92.9	94.9	94.0	94.3	92.9	97.1	92.9	97.3	92.4	87.3	88.1	90.9	93.7	90.2	90.6	87.6

CQS Q values

Q1	Q2	Q3	Q4	Q5	Q6	Q7	Q8	Q9	Q10	Q11	Q12	Q13	Q14	Q15
91.2	96.4	89.5	88.7	92.0	94.2	94.1	95.0	97.5	95.5	95.4	95.7	95.7	91.7	91.7

Color parameters

Color temperature	Color rendering index	Red component	Color fidelity	Color gamut	Color quality scale	Color coordinate cie 1931	Color coordinate cie 1931	Color coordinate	Color coordinate	Color deviation from black body
CCT	CRI	CRI R9	TM30 Rf	TM30 Rg	CQS	x	y	u	v	Δuv
3112 K	95.4	74.9	92.3	99.2	93.0	0.430	0.402	0.247	0.346	0.0003

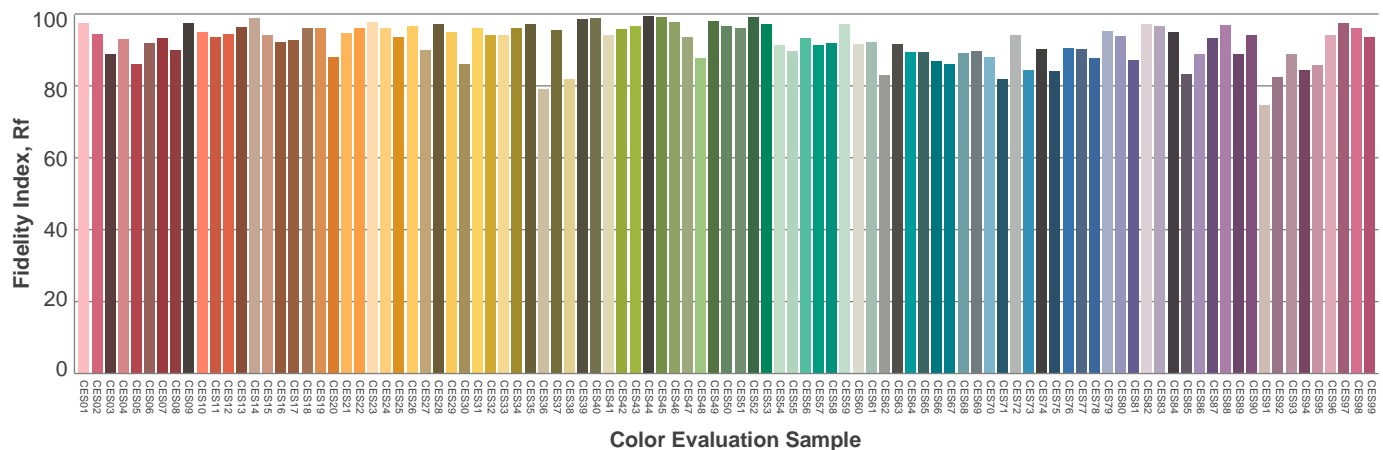
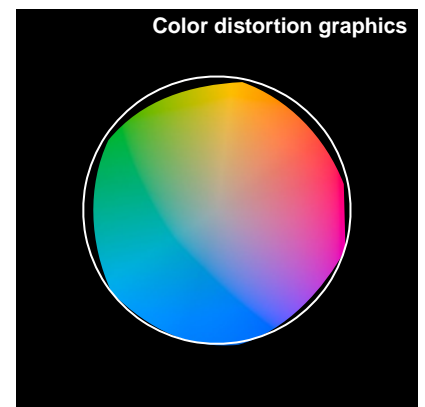
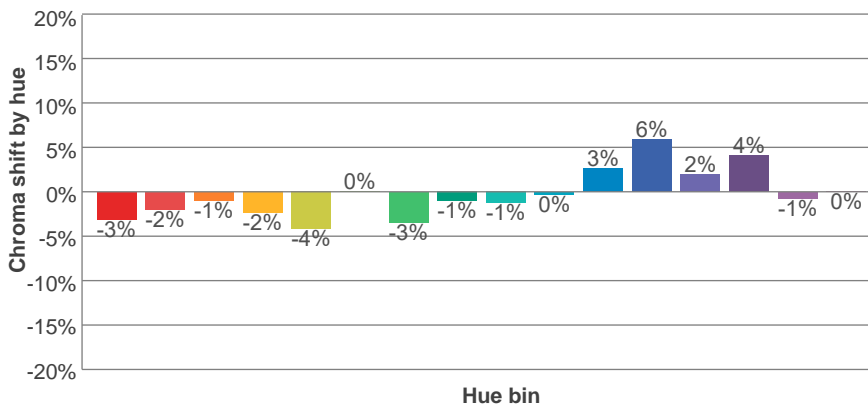
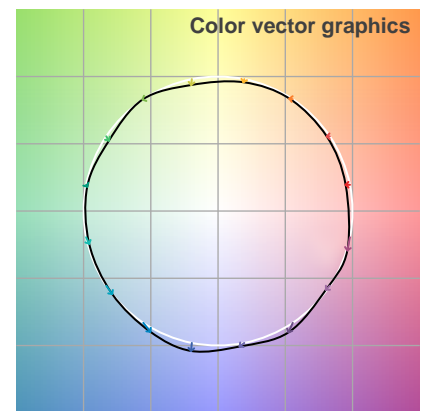
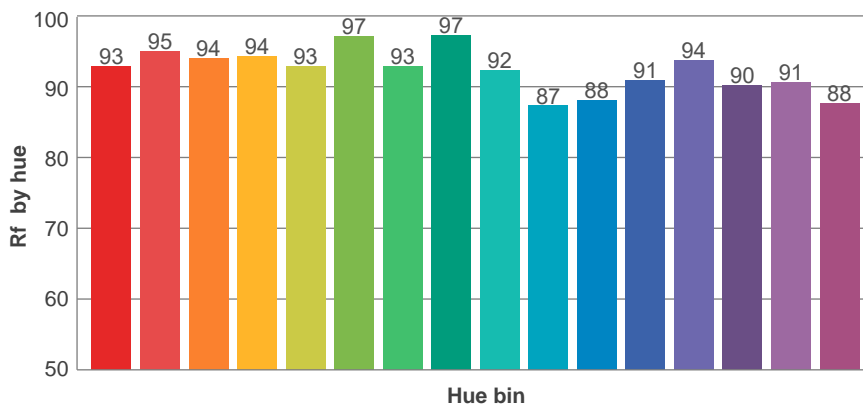
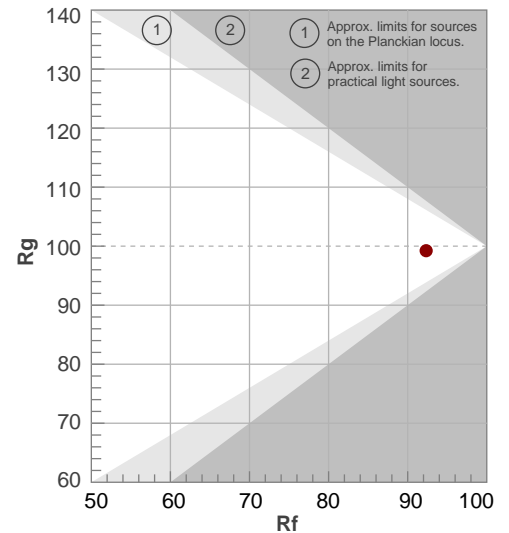
Rf 92.3

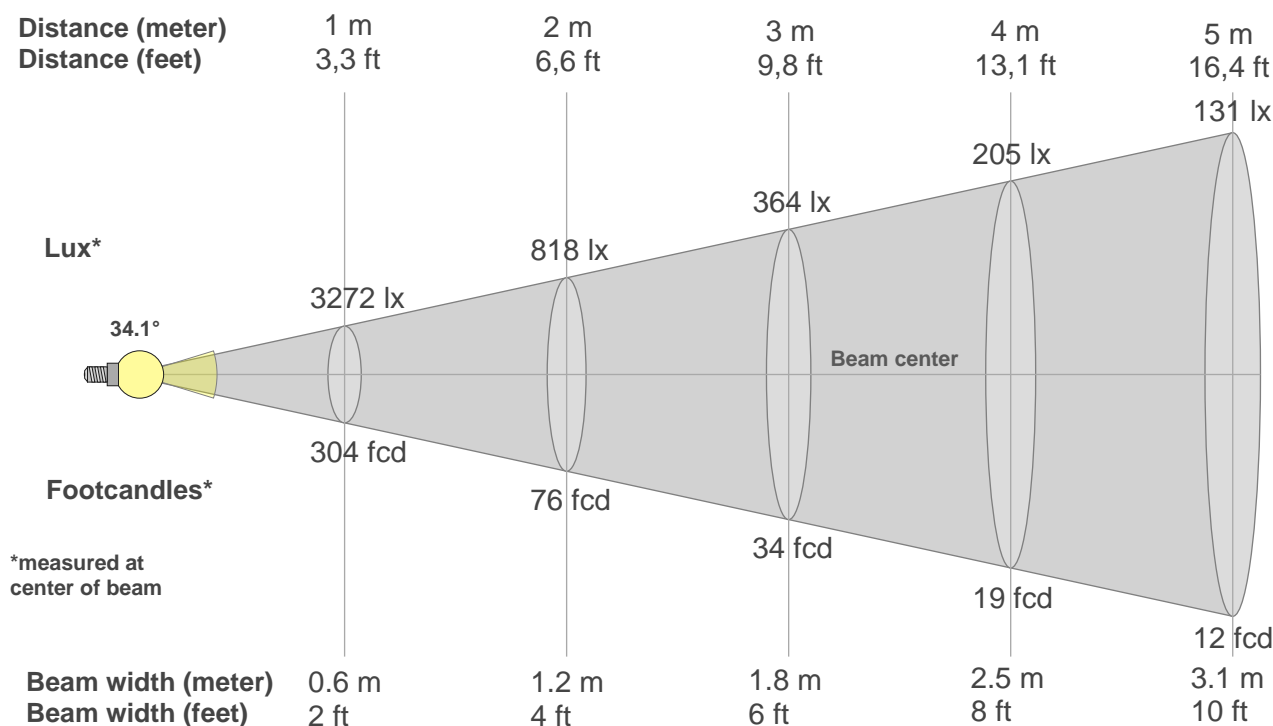
Fidelity index Rf

Rg 99.2

Gammut index Rg

Hue Bin	R _f	Graphic shifts (%)	
		Chroma	Hue
1	93	-3%	1%
2	95	-2%	1%
3	94	-1%	2%
4	94	-2%	0%
5	93	-4%	1%
6	97	0%	1%
7	93	-3%	2%
8	97	-1%	1%
9	92	-1%	5%
10	87	0%	8%
11	88	3%	8%
12	91	6%	1%
13	94	2%	-4%
14	90	4%	-7%
15	91	-1%	-4%
16	88	0%	-10%





Beam intensities from 1-20m

1m	2m	3m	4m	5m	6m	7m	8m	9m	10m	11m	12m	13m	14m	15m	16m	17m	18m	19m	20m
3.3ft	6.6ft	9.8ft	13.1ft	16.4ft	19.7ft	23ft	26.2ft	29.5ft	32.8ft	36.1ft	39.4ft	42.7ft	45.9ft	49.2ft	52.5ft	55.8ft	59.1ft	62.3ft	65.6ft
3272lx	818lx	364lx	205lx	131lx	91lx	67lx	51lx	40lx	33lx	27lx	23lx	19lx	17lx	15lx	13lx	11lx	10lx	9lx	8lx
304fcd	76fcd	33.8fcd	19fcd	12.2fcd	8.4fcd	6.2fcd	4.8fcd	3.8fcd	3fcd	2.5fcd	2.1fcd	1.8fcd	1.6fcd	1.4fcd	1.2fcd	1.1fcd	0.9fcd	0.8fcd	0.8fcd

Intensities in 0° c-plane

0°	2°	4°	6°	8°	10°	12°	14°	16°	18°	20°	22°	24°	26°	28°	30°	32°	34°	36°	38°
3272	3247	3173	3036	2838	2585	2292	1983	1678	1375	1082	813	593	424	293	191	116	63	34	19
100%	99%	97%	93%	87%	79%	70%	61%	51%	42%	33%	25%	18%	13%	9%	6%	4%	2%	1%	1%

Intensities in 90° c-plane

0°	2°	4°	6°	8°	10°	12°	14°	16°	18°	20°	22°	24°	26°	28°	30°	32°	34°	36°	38°
3272	3244	3166	3042	2878	2673	2432	2174	1905	1629	1336	1071	835	624	438	296	197	127	79	47
100%	99%	97%	93%	88%	82%	74%	66%	58%	50%	41%	33%	26%	19%	13%	9%	6%	4%	2%	1%

Intensities in 180° c-plane

0°	2°	4°	6°	8°	10°	12°	14°	16°	18°	20°	22°	24°	26°	28°	30°	32°	34°	36°	38°
3272	3250	3176	3042	2839	2582	2290	1983	1677	1376	1087	824	599	426	296	194	118	65	34	19
100%	99%	97%	93%	87%	79%	70%	61%	51%	42%	33%	25%	18%	13%	9%	6%	4%	2%	1%	1%

Intensities in 270° c-plane

0°	2°	4°	6°	8°	10°	12°	14°	16°	18°	20°	22°	24°	26°	28°	30°	32°	34°	36°	38°
3272	3246	3167	3043	2876	2671	2433	2170	1900	1630	1364	1104	865	661	489	343	233	154	98	62
100%	99%	97%	93%	88%	82%	74%	66%	58%	50%	42%	34%	26%	20%	15%	10%	7%	5%	3%	2%

Beam angle 50%	Field angle 10%	Cutoff angle 2,5%	Intensity ratio in 120° cone	Intensity ratio in 90° cone
34.1°	57.3°	69.8°	99.7%	99.5%