

Light efficiency:

104 Lumen/Watt

Light quality:

CRI: 82.6

Color temperature:

3019 K

Output: 1718 lm

Peak: 1604 cd

Power: 16.5 W

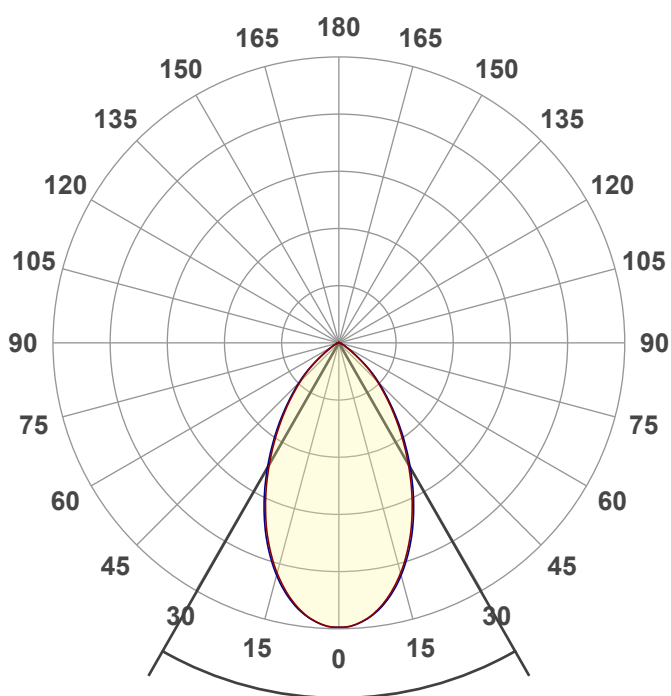
PF: 0.97



BETA-3R-SW-20LM-30K-80-60D-WH-WH

Date and time:

12/28/2022 1:17:54 PM



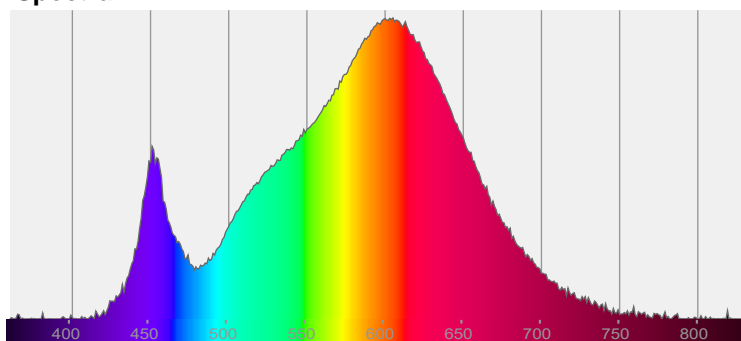
Beam angle

59.5°

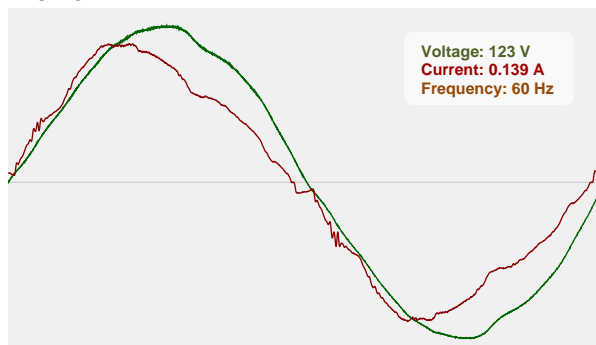


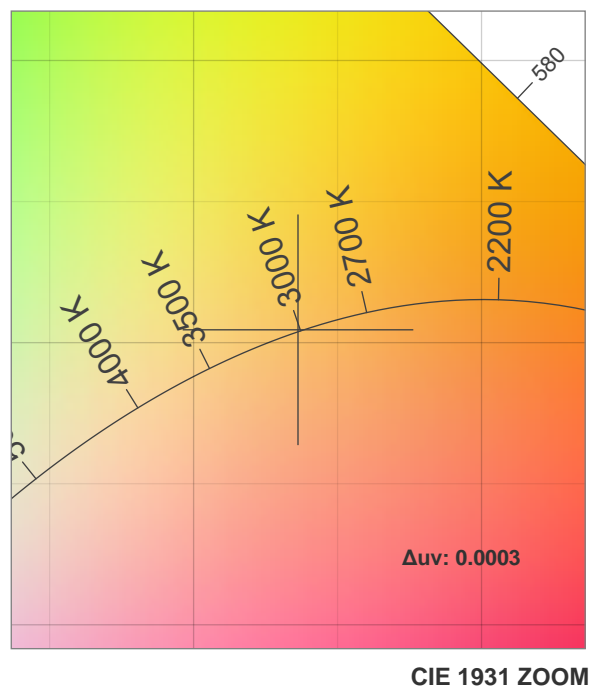
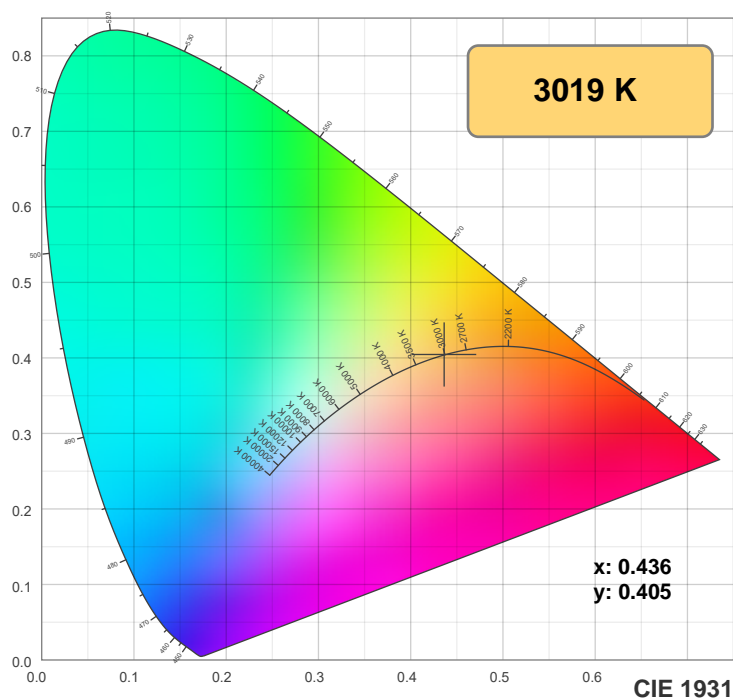
CIE 1931
x: 0.436
y: 0.405

Spectra

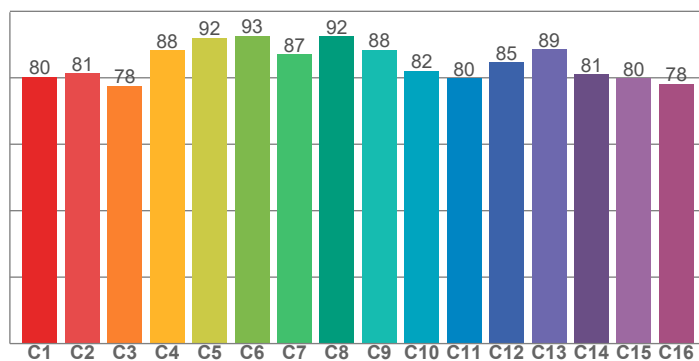


Power

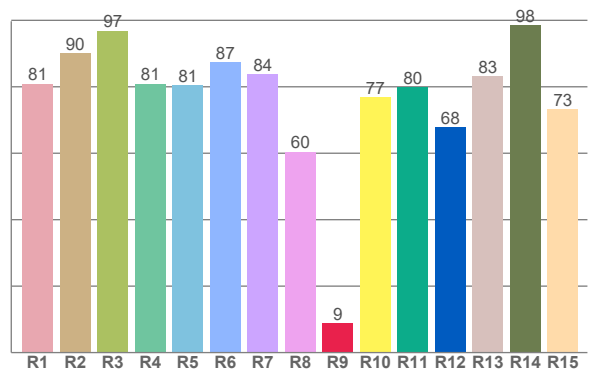




TM30: 84.5



CRI: 82.6 (R1-R8)



CRI R values, only R1-R8 are used to calculate final CRI value

R1	R2	R3	R4	R5	R6	R7	R8	R9	R10	R11	R12	R13	R14	R15
80.9	90.1	96.8	80.9	80.6	87.4	83.8	60.4	8.9	76.9	79.8	67.9	83.1	98.4	73.3

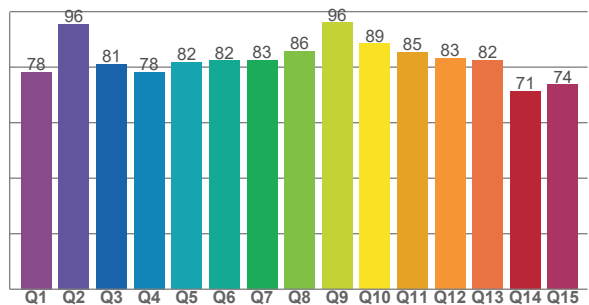
TM30 C values, 16 binned values out of total of 99 C values

C1	C2	C3	C4	C5	C6	C7	C8	C9	C10	C11	C12	C13	C14	C15	C16
80.2	81.4	77.6	88.2	91.9	92.7	87.0	92.5	88.3	82.0	79.9	84.6	88.6	81.0	79.8	78.2

CQS Q values

Q1	Q2	Q3	Q4	Q5	Q6	Q7	Q8	Q9	Q10	Q11	Q12	Q13	Q14	Q15
78.2	95.6	81.1	78.3	81.7	82.4	82.5	85.7	96.0	88.6	85.4	83.4	82.5	71.4	73.7

CQS: 81.7



Color parameters

Color temperature	Color rendering index	Red component	Color fidelity	Color gamut	Color quality scale	Color coordinate cie 1931	Color coordinate cie 1931	Color coordinate	Color coordinate	Color deviation from black body
CCT	CRI	CRI R9	TM30 Rf	TM30 Rg	CQS	x	y	u	v	Δuv
3019 K	82.6	8.9	84.5	96.3	81.7	0.436	0.405	0.250	0.348	0.0003

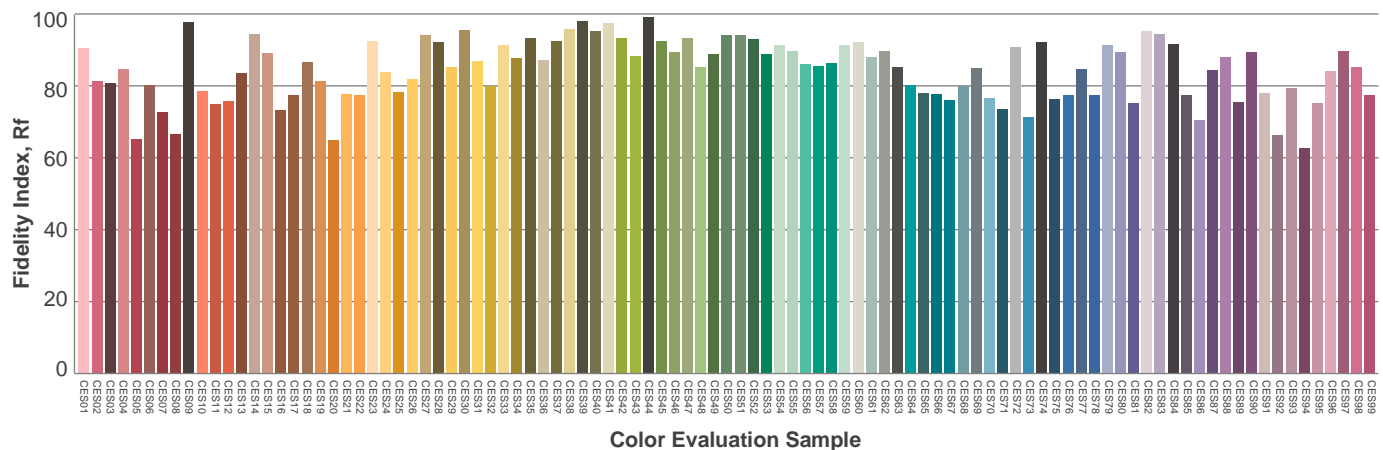
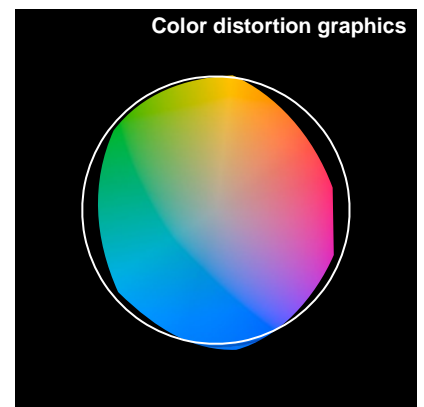
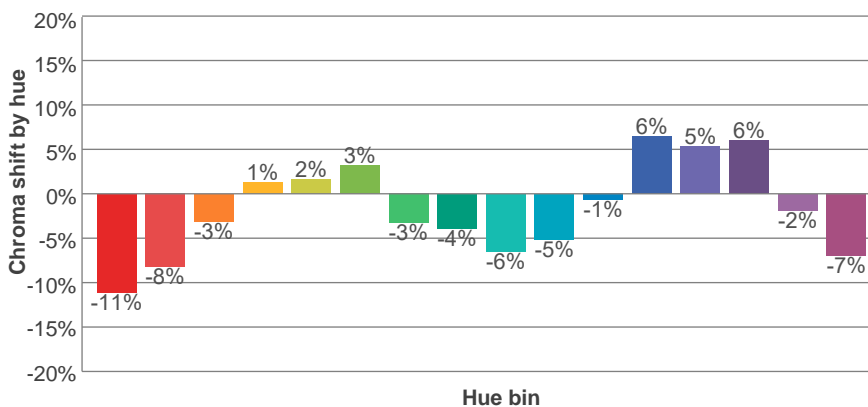
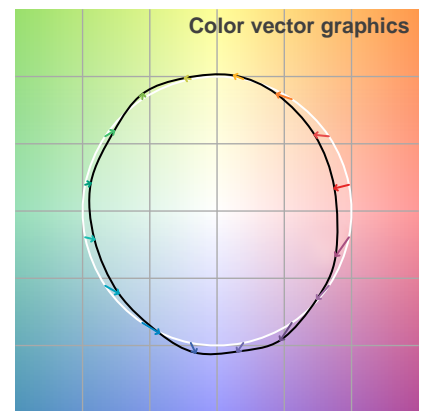
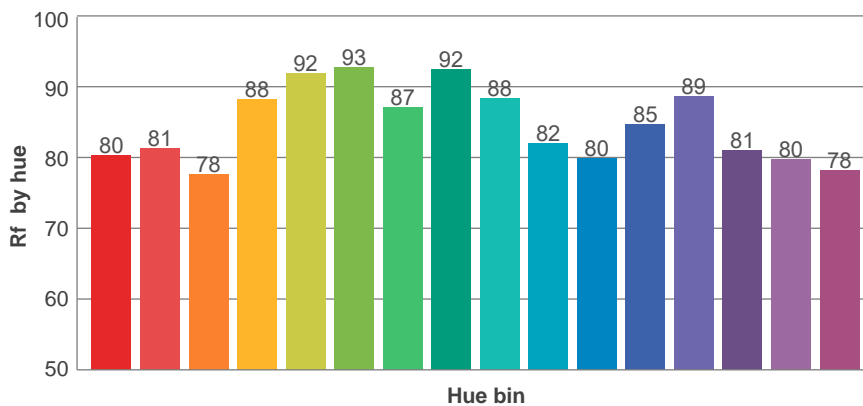
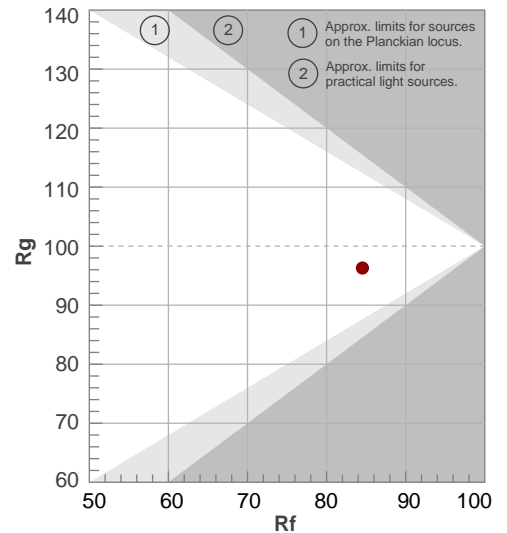
Rf 84.5

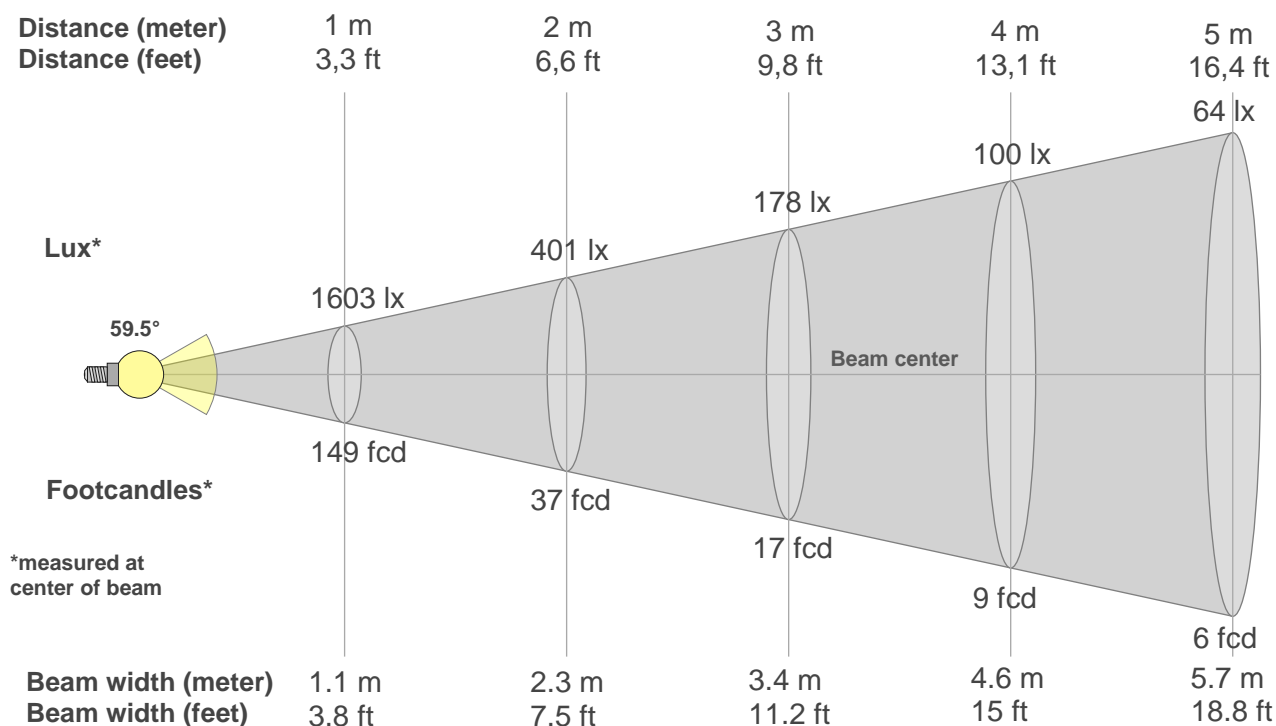
Fidelity index Rf

Rg 96.3

Gamut index Rg

Hue Bin	R _f	Graphic shifts (%)	
		Chroma	Hue
1	80	-11%	-1%
2	81	-8%	7%
3	78	-3%	11%
4	88	1%	7%
5	92	2%	4%
6	93	3%	-3%
7	87	-3%	-7%
8	92	-4%	-2%
9	88	-6%	3%
10	82	-5%	10%
11	80	-1%	15%
12	85	6%	5%
13	89	5%	-6%
14	81	6%	-14%
15	80	-2%	-13%
16	78	-7%	-16%





Beam intensities from 1-20m

1m	2m	3m	4m	5m	6m	7m	8m	9m	10m	11m	12m	13m	14m	15m	16m	17m	18m	19m	20m
3.3ft	6.6ft	9.8ft	13.1ft	16.4ft	19.7ft	23ft	26.2ft	29.5ft	32.8ft	36.1ft	39.4ft	42.7ft	45.9ft	49.2ft	52.5ft	55.8ft	59.1ft	62.3ft	65.6ft
1603lx	401lx	178lx	100lx	64lx	45lx	33lx	25lx	20lx	16lx	13lx	11lx	9lx	8lx	7lx	6lx	6lx	5lx	4lx	4lx
148.9fcd	37.2fcd	16.5fcd	9.3fcd	6fcd	4.1fcd	3fcd	2.3fcd	1.8fcd	1.5fcd	1.2fcd	1fcd	0.9fcd	0.8fcd	0.7fcd	0.6fcd	0.5fcd	0.5fcd	0.4fcd	0.4fcd

Intensities in 0° c-plane

0°	5°	10°	15°	20°	25°	30°	35°	40°	45°	50°	55°	60°	65°	70°	75°	80°	85°	90°	95°
1603	1571	1480	1342	1169	976	780	598	438	304	186	91	47	26	10	5	2	2	1	0
100%	98%	92%	84%	73%	61%	49%	37%	27%	19%	12%	6%	3%	2%	1%	0%	0%	0%	0%	0%

Intensities in 90° c-plane

0°	5°	10°	15°	20°	25°	30°	35°	40°	45°	50°	55°	60°	65°	70°	75°	80°	85°	90°	95°
1603	1573	1488	1355	1186	997	802	619	455	319	198	98	50	27	11	4	3	1	1	1
100%	98%	93%	85%	74%	62%	50%	39%	28%	20%	12%	6%	3%	2%	1%	0%	0%	0%	0%	0%

Intensities in 180° c-plane

0°	5°	10°	15°	20°	25°	30°	35°	40°	45°	50°	55°	60°	65°	70°	75°	80°	85°	90°	95°
1603	1571	1480	1342	1169	976	780	598	438	304	186	91	47	26	10	5	2	2	1	0
100%	98%	92%	84%	73%	61%	49%	37%	27%	19%	12%	6%	3%	2%	1%	0%	0%	0%	0%	0%

Intensities in 270° c-plane

0°	5°	10°	15°	20°	25°	30°	35°	40°	45°	50°	55°	60°	65°	70°	75°	80°	85°	90°	95°
1603	1573	1488	1355	1186	997	802	619	455	319	198	98	50	27	11	4	3	1	1	1
100%	98%	93%	85%	74%	62%	50%	39%	28%	20%	12%	6%	3%	2%	1%	0%	0%	0%	0%	0%

Beam angle 50%	Field angle 10%	Cutoff angle 2,5%	Intensity ratio in 120° cone	Intensity ratio in 90° cone
59.5°	102.6°	122.9°	98.0%	86.8%