

NU
MILLWORK

CRAFTSMANSHIP AT ITS FINEST

ALPHABET continues to innovate by engineering a seamless millwork mounting option designed to perfectly integrate into any wood ceiling applications. ALPHABET's trimless millwork downlights are optimized for vertical or horizontal slatted and flat wood ceilings. Complete with all of our industry-leading LED and controls technology. Available in our award winning NU Series 3" and 4" (round and square) downlight, wall wash, and adjustable.



LED
COB OR
XICATO



LUMENS
UP TO
3320 LM



CRI
>90

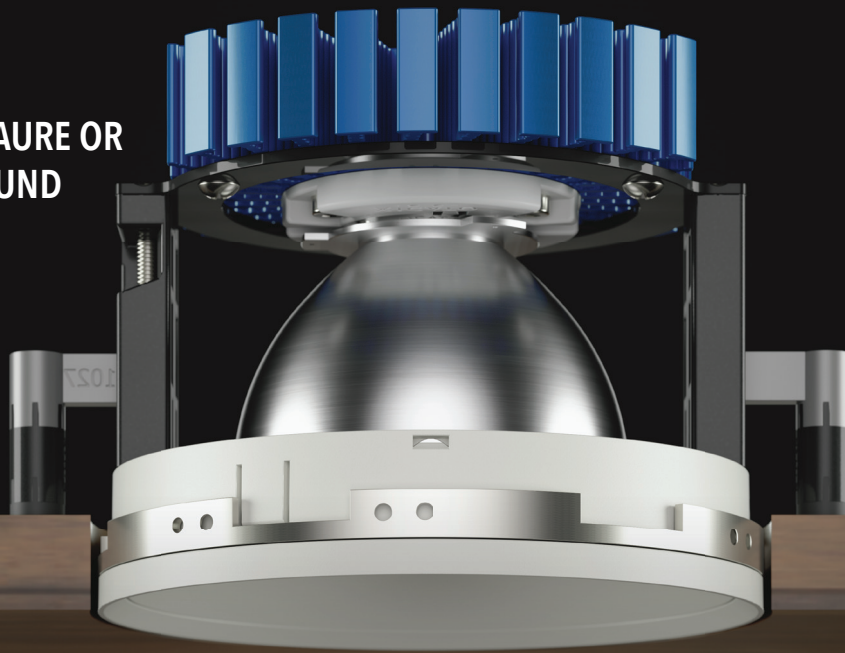


CCT
22K, 27K,
30K, 35K,
40K, & 50K



SDCM
1X2-STEP
MACADAM
ELLIPSE

SQAURE OR
ROUND



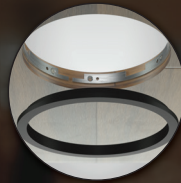
EASY INSTALLATION



STEP 1
POSITION MOUNTING
BRACKET & SPACER



STEP 2
FASTEN MOUNTING
BRACKET TO WOOD



STEP 3
REMOVE SPACER



STEP 4
INSTALL LUMINAIRE



STEP 5
INSTALL TRIM

GLARE REDUCTION TRIMS



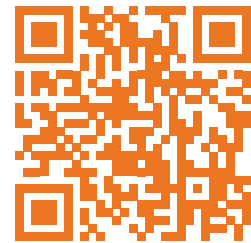
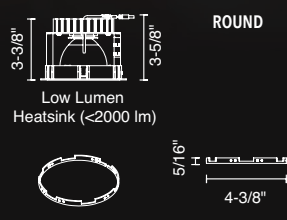
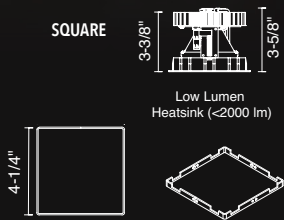
HYPERBOLIC



HONEYCOMB



PINHOLE



SCAN HERE TO
LEARN MORE

88 Maxwell
Irvine, CA 92618
714.259.9959

AlphabetLighting.com

LEDRAbrands