

ALPHABET QUICK SHIP LEAD-TIMES

5 Business Days

DIM10 (eldoLED 1%) or ELV dimming
1-50 UNITS
51-100 CONSULT FACTORY

10 Business Days

DIM10 (eldoLED 1%) or ELV dimming
51-250 UNITS
251-500 CONSULT FACTORY

21 Business Days

LUDA (LUTRON)
1-100 UNITS

Ship Dates and Scheduling: Business days are Monday-Friday and do not include weekend or holidays. All ship dates are estimated and are determined per the following examples

- If order is received before 11:00am PST on Monday for a 5-day item, the ESD will be the following Monday.
- Order received after 11:00am for a 5-day item will receive an ESD based on the following business day.

Other Shipping Scenarios:

- If order is received with both standard and QS line items, the QS items will be processed on a separate Sale Order with -QS after PO number provided.
- If items ordered are intended to ship together, please note "SHIP COMPLETE". Items will ship based on longest lead time.
- Partial shipment may be required based on current factory loads.
- Ceiling plate rough-ins can be shipped ahead of LED modular units with possible freight adder (consult factory for terms).

Consult factory for options or quantities not shown.

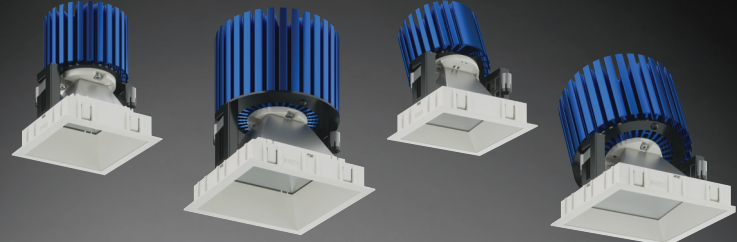
NU SERIES 3" AND 4" - ROUND



ORDERING CODE EXAMPLE: NU3 - RD - XTM19 - 13LM - 35K - 83 - HE40 - 120 - DIM10 - NC - WH - WH - QS

SERIES	NU3	3"
	NU4	4"
TYPE	RD	round downlight
	RDT	round downlight trimless
	RW	round wall wash
	RWT	round wall wash trimless
LED	XTM19	XTM19
LUMEN	13LM	See spec sheet for delivered lumens
	20LM	
CCT	30K	3000K
	35K	3500K
CRI	83	83 CRI
REFLECTORS	HE40	40° high efficiency diffused lens (NU4 ONLY)
	HE45	45° high efficiency diffused lens (NU3 ONLY)
	WW	wall wash
VOLTAGE	120	120V
	277	277V
DIMMING	DIM10	standard driver with flicker free 0-10V dimming to 1%
	LUDA	LUTRON ecosystem dimming to 1%
	ELV	leading & trailing edge dimming (Triac/ELV) (120V and 13LM ONLY)
MOUNTING	NC	new construction with ceiling fitting plate
	RET	retrofit, no ceiling fitting plate
TRIM COLOR	WH	white
BEZEL COLOR	WH	white
QUICK SHIP	QS	quick ship

NU SERIES 3" AND 4" - SQUARE



ORDERING CODE EXAMPLE: NU3 - QD - XTM19 - 13LM - 35K - 83 - HE60 - 120 - DIM10 - NC - WH - WH - QS

SERIES	NU3	3"
	NU4	4"
TYPE	QD	square downlight
	QDT	square downlight trimless
	QW	square wall wash
	QWT	square wall wash trimless
LED	XTM19	XTM19
LUMEN	13LM	See spec sheet for delivered lumens
	20LM	
CCT	30K	3000K
	35K	3500K
CRI	83	83 CRI
REFLECTORS	HE60	60° high efficiency diffused lens
	WW	wall wash
VOLTAGE	120	120V
	277	277V
DIMMING	DIM10	standard driver with flicker free 0-10V dimming to 1%
	LUDA	LUTRON ecosystem dimming to 1%
	ELV	leading & trailing edge dimming (Triac/ELV) (120V and 13LM ONLY)
MOUNTING	NC	new construction with ceiling fitting plate
	RET	retrofit, no ceiling fitting plate
TRIM COLOR	WH	white
BEZEL COLOR	WH	white
QUICK SHIP	QS	quick ship